



EVIPNet Europe



**World Health
Organization**

REGIONAL OFFICE FOR
Europe



**Organisation
mondiale de la Santé**

BUREAU RÉGIONAL DE L'
Europe



Weltgesundheitsorganisation

REGIONALBÜRO FÜR
Europa



**Всемирная организация
здравоохранения**

Европейское региональное бюро

Tanja Kuchenmüller

Technical Officer

Evidence and Information for Policy

Division of Information, Evidence, Research and Innovation

EGHI Meeting

19 May 2015

Luxemburg



Evidence-informed Policy Network Europe

- 1. Why is EVIPNet important?**
- 2. What is EVIPNet and what does it do in the European Region?**
- 3. What role do data and research evidence play for EVIPNet?**

“There is nothing a politician likes so little as to be well informed, it makes decision making so complex and difficult.”

John Maynard Keynes

Challenges for knowledge brokering

1. Research isn't valued as an information input

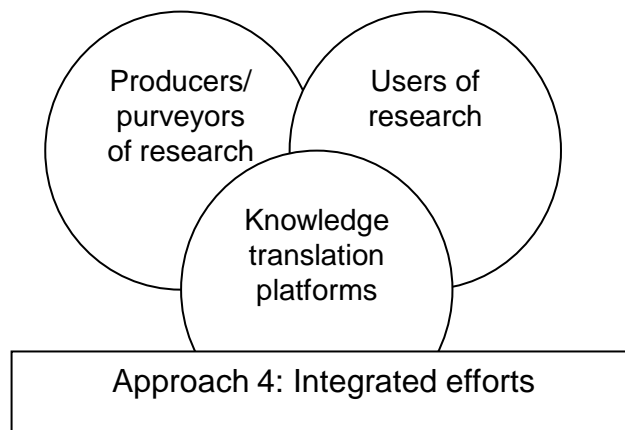
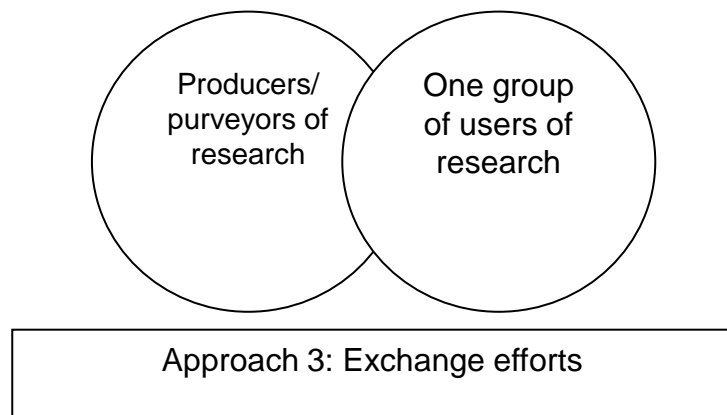
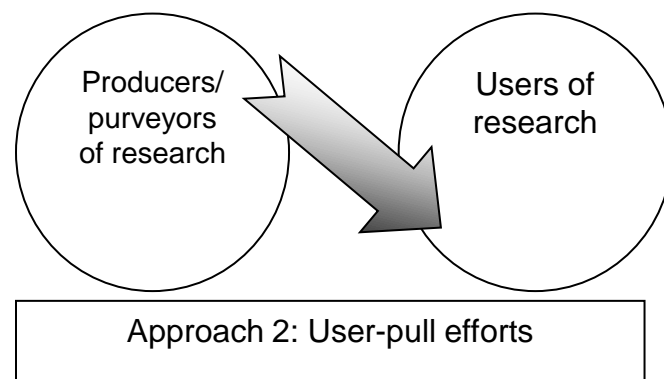
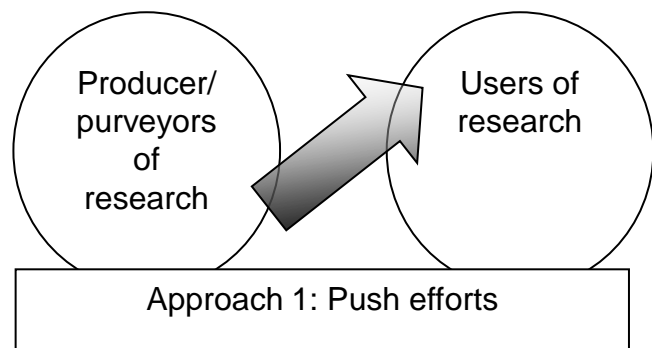
2. Research isn't relevant

3. Research isn't easy to use

- Evidence is not communicated effectively (wrong targeting)
- Evidence is not available when policy-makers need it and in a form that they can use it (i.e., wrong time and wrong packaging)
- Policy-makers lack the capacity to find and use evidence efficiently and lack mechanisms to prompt to use it
- Policy-makers lack opportunities to discuss system challenges with researchers

Lavis, J.: Evidence-Informed Policymaking, Evidence-Informed Policymaking, EVIPNet Europe multi-country Workshop on using research evidence for policy-making. Izmir, Turkey, October 2013.

Approaches increasing research utilization



Enablers and barriers of evidence-informed policy-making (EIP)

Review of 24 studies that asked over 2000 policymakers what facilitated or prevented their use of research evidence

Innvaer et al. J Hlth Serv Res Pol 2002;7:241

- **#1 facilitator of research use:** personal contact between researchers between researchers and policy-makers (13/24)
- **#1 barrier to research use:** absence of personal contact between researchers and policy-makers (11/24)

Urges Member States

(5) to establish or strengthen mechanisms to transfer knowledge in support of evidence-based public health and health-care delivery systems, and evidence-based health-related policies;



- aims to promote – **in support of Health 2020** – the systematic use of research evidence in policy-making to improve health systems.
- increases **country capacity** in developing sound and effective health policies.
- supports the establishment of a **national advisory body** which ensures that policies are grounded in research evidence.

European Health Information Initiative

is committed to improving the health of the people of the European Region by improving the information that underpins policy.



1

Development of indicators for health and well-being

2

Enhanced dissemination of health information

3

Capacity building

4

Strengthening of health information networks

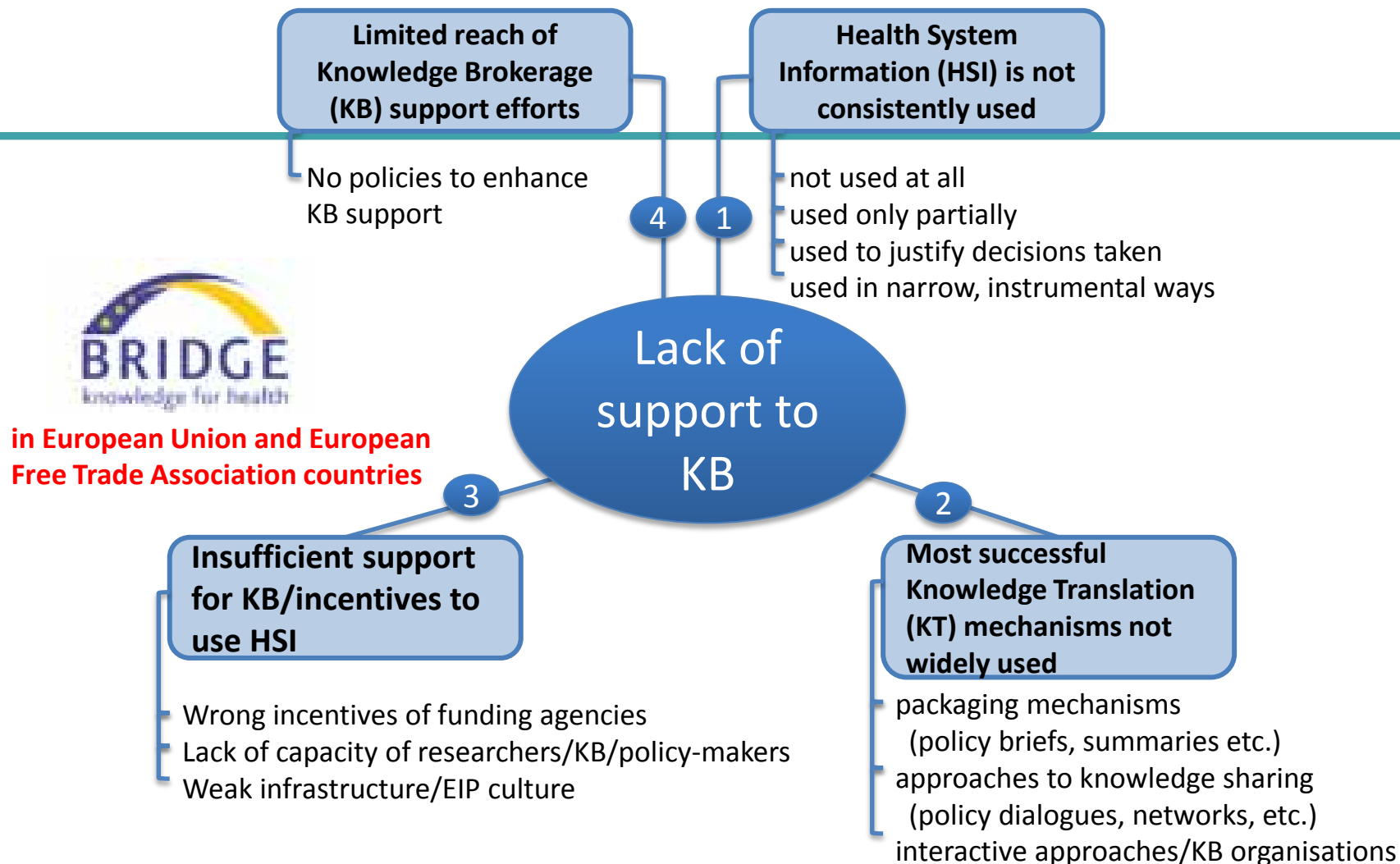
5

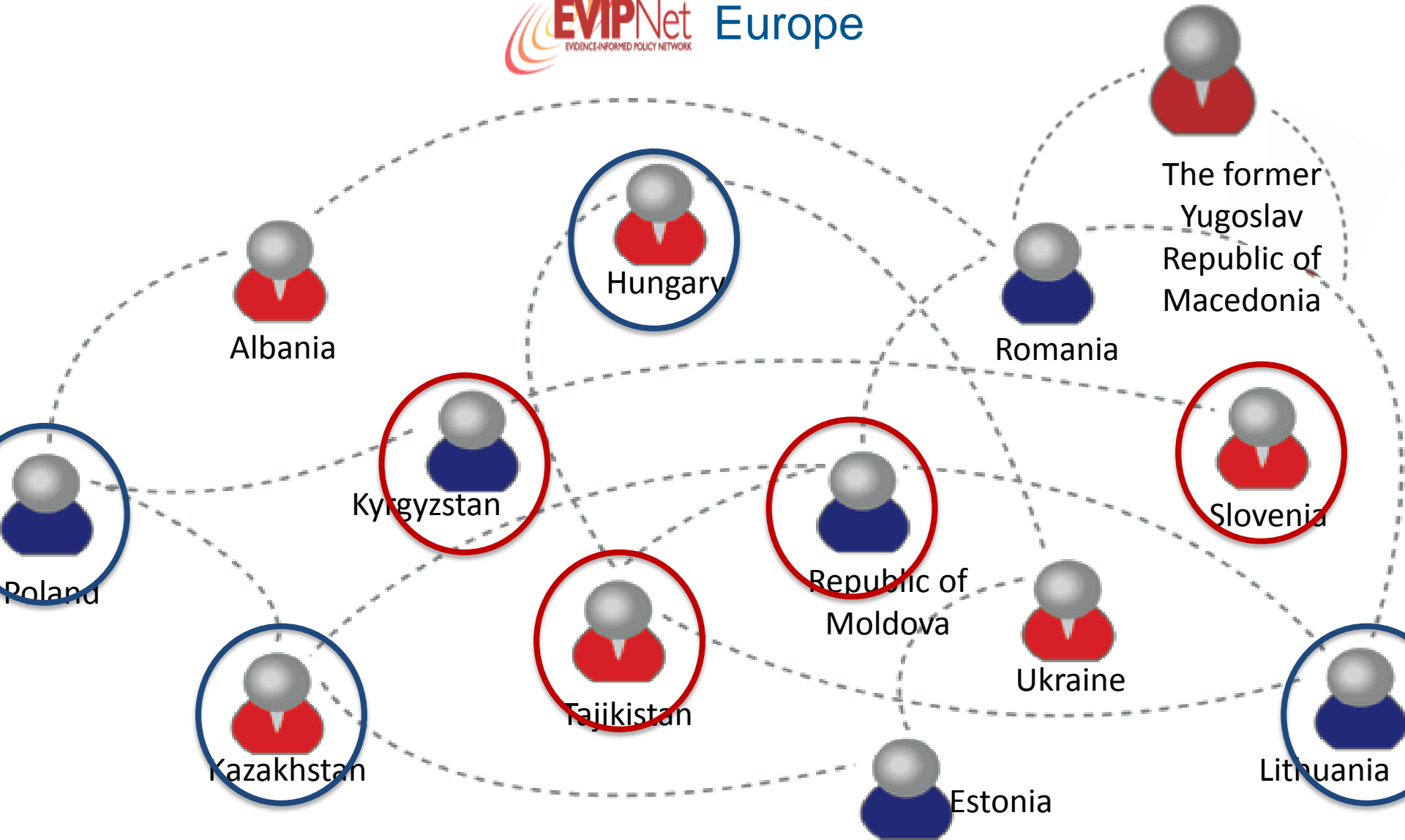
Support for health information strategy development

6

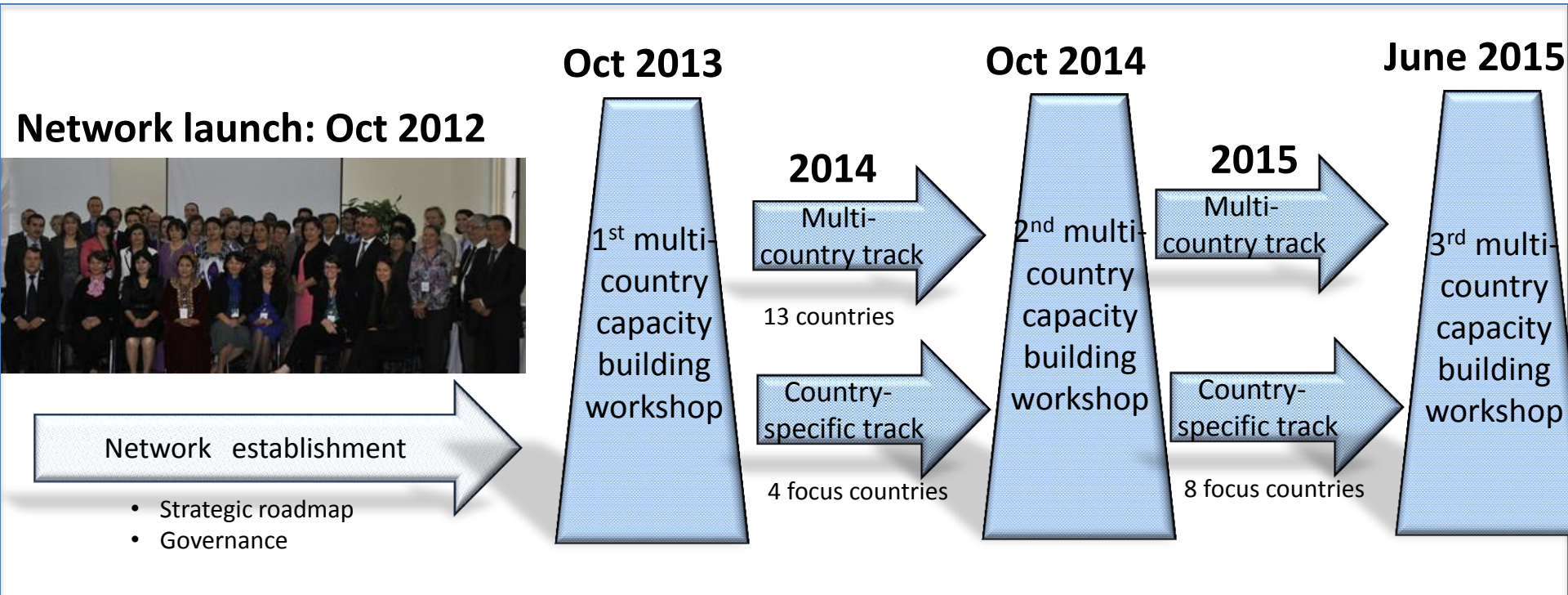
Communication & advocacy

The European Challenge...





Status quo of EVIPNet Europe



Responses to challenges for KB

Convince policymakers and stakeholders to place value on the use of research evidence

1. **Research isn't valued as an information input [General climate for research use]**
2. **Research isn't relevant [Production]**
3. **Research isn't easy to use [Translation]**
 - a. Research isn't communicated effectively [Push]
 - b. Research isn't available when policy-makers need it and in a form that they can use [Facilitating pull]
 - c. Policy-makers lack mechanisms to prompt them to use research in policy-making [Pull]
 - d. Policy-makers lack fora where policy challenges can be discussed with key stakeholders [Exchange]

Adapted from Lavis, J.: Evidence-Informed Policymaking, EVIPNet Europe Multi-Country Meeting
Izmir, Turkey, October 2015

Responses to challenges for KB

1. Research isn't valued as an climate for research use]

2. Research isn't relevant [Production]

3. Research isn't easy to use [Translation]

a. Research isn't communicated effectively [Push]

b. Research isn't available when policy-makers need it and in a form that they can use [Facilitating pull]

c. Policy-makers lack mechanisms to prompt them to use research in policy-making [Pull]

d. Policy-makers lack fora where policy challenges can be discussed with key stakeholders [Exchange]

Engage policymakers and stakeholders periodically in priority-setting processes and communicate the priorities to researchers

Adapted from Lavis, J. Evidence-Informed Policymaking, EVIPNet Europe Multi-Country Meeting
Izmir, Turkey, October 2015

System?

Responses to challenges for KB

1. Research isn't valued as an information input [General climate for research use]
2. Research isn't relevant [Production]
3. Research isn't easy to use [Translation]
 - a. Research isn't communicated effectively [Push]
 - b. Research isn't available when policy-makers need it and in a form that they can use [Facilitating pull]
 - c. Policy-makers lack mechanisms to prompt them to use research in policy-making [Pull]
 - d. Policy-makers lack fora where policy challenges can be discussed with key stakeholders [Exchange]

EVIPNet evidence briefs for policy

Adapted from Lavis, J. Evidence-Informed Policymaking, EVIPNet Europe Multi-Country Meeting
Izmir, Turkey, October 2015

System?

Responses to challenges for KB

1. Research isn't valued as an information input [General climate for research use]
2. Research isn't relevant [Production]
3. Research isn't easy to use [Translation]
 - a. Research isn't communicated effectively [Push]
 - b. Research isn't available when policy-makers need it and in a form that they can use [Facilitating pull]
 - c. Policy-makers lack mechanisms to prompt them to use research in policy-making [Pull]
 - d. Policy-makers lack fora where policy challenges can be discussed with key stakeholders [Exchange]

One-stop-shops
Rapid response units
Capacity building for policy-makers

Adapted from Lavis, J. Evidence-Informed Policymaking, EVIPNet Europe Multi-Country Meeting
Izmir, Turkey, October 2015

System?

Responses to challenges for KB

1. Research isn't valued as an information input [General climate for research use]
2. Research isn't relevant [Production]
3. Research isn't easy to use [Translation]
 - a. Research isn't communicated effectively [Push]
 - b. Research isn't available when policy-makers need it in a form that they can use [Facilitating pull]
 - c. Policy-makers lack mechanisms to prompt them to use research in policy-making [Pull]
 - d. Policy-makers lack fora where policy challenges can be discussed with key stakeholders [Exchange]

Create incentives

Adapted from Lavis, J.: Evidence-Informed Policymaking, EVIPNet Europe Multi-Country Meeting
Izmir, Turkey, October 2015

System?

Responses to challenges for KB

1. Research isn't valued as an information input [General climate for research use]
2. Research isn't relevant [Production]
3. Research isn't easy to use [Translation]
 - a. Research isn't communicated effectively [Push]
 - b. Research isn't available when policy-makers need it and in a form that they can use [Facilitating pull]
 - c. Policy-makers lack mechanisms to promote research in policy-making [Pull]
 - d. Policy-makers lack fora where policy challenges can be discussed with key stakeholders [Exchange]

Policy dialogues

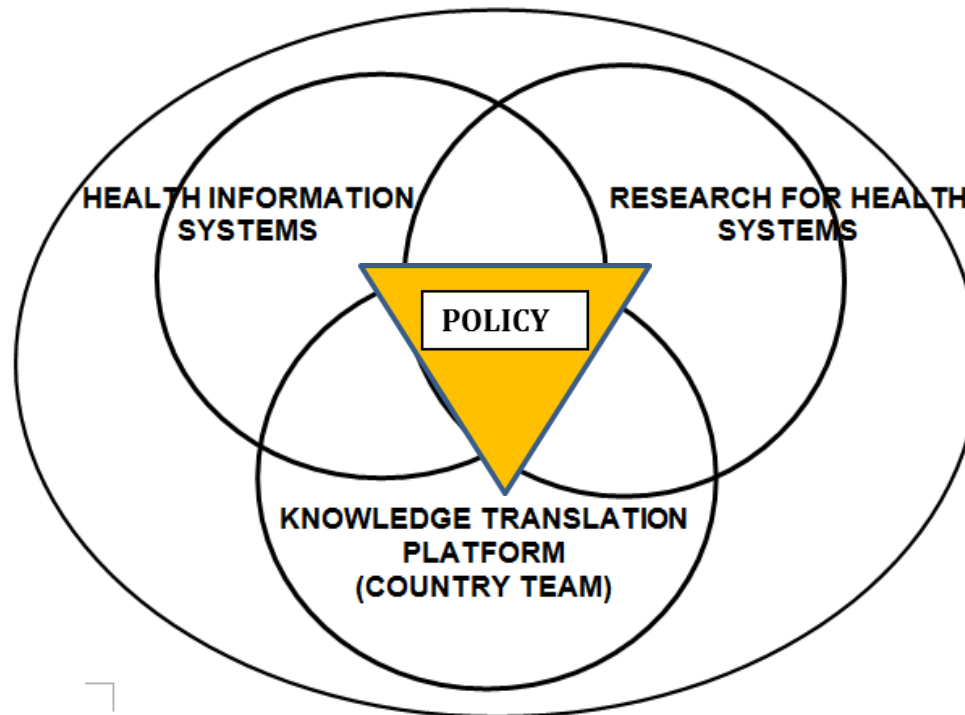
Adapted from Lavis, J. Evidence-Informed Policymaking, EVIPNet Europe Multi-Country Meeting
Izmir, Turkey, October 2015

Roles of data and research evidence in the policy-making process

Stage of the policy cycle	Role of data	Role of research evidence
Clarifying a problem	Yes for indicators	Yes for comparisons and framing
Framing options	No	Yes for benefits, harms and costs
Bringing about change	No	Yes for the benefits, harms, costs etc. of implementation strategies
Monitoring and evaluation	Yes for monitoring	Yes for evaluating impact

Adapted from Lavis, J.: Evidence-Informed Policymaking, EVIPNet Europe multi-country Workshop on using research evidence for policy-making. Izmir, Turkey, October 2013.

Institutional integration: information and research results



Panisset, U: Evidence-informed policy-making, country demand and WHO mandate: the role of EVIPNet. EVIPNet Europe. EVIPNet Europe multi-country Workshop on using research evidence for policy-making, Izmir, Turkey, October 2013

Contributions of the European Commission

In the past:

- EVIPNet Africa/SURE (*Supporting the Use of Research Evidence for Policy in African Health Systems*)
- BRIDGE (*Brokering knowledge and Research Information to support the Development and Governance of health systems in Europe*)

Potential new areas of collaboration:

- Mapping existing KB initiatives, mechanisms and practices in the WHO European
- Fostering reciprocal learning in the WHO European Region

Thank you!

Source: Buse K, Young J. "Tools to understand the political and policy context & engage with policy makers". Presentation, Oxford, November 2006.