

HEALTH AT A GLANCE: EUROPE 2014

LIFE EXPECTANCY

at birth

79.2 in 2012
74.1 in 1990

highest in ES **82.5** years
lowest in LV, LT **74.1** years

Women

82.2

years



Men

76.1

years



Cardiovascular Diseases **40%**



Cancer **26%**



Transport Accidents
cause annually:

35000
deaths



Suicide
60000

decreased by **20%**
between 2000
and 2011

MORTALITY CAUSES

HEALTH DETERMINANTS



Smoking - the highest avoidable health risk in Europe

22.8 % Europeans smoke



lowest in SE **13.1%** smokers

highest in E **38.9%** smokers

Alcohol caused



7.6%

of deaths among Men
of deaths among Women

consumption lowest: **6.1** l/capita

consumption highest: **12.7** l/capita

Obesity



triggers higher risk of chronic illnesses

53%

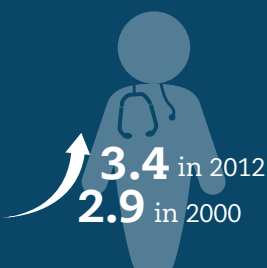
adults are overweight and obese

16.7 % are obese

lowest in RO **7.9%**

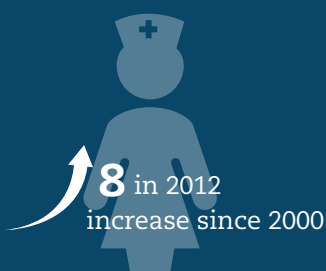
highest in HU **28.5%**

Number of Physicians*

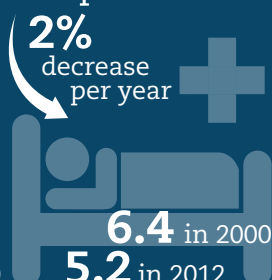


* per 1000 population

Number of Nurses*

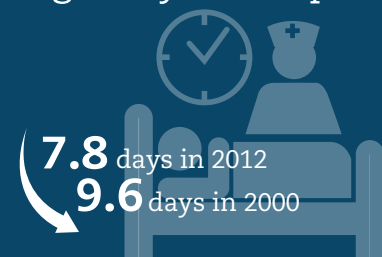


Number of Hospital Beds*



HEALTH CARE RESOURCES

Average stay in Hospital



HEALTH EXPENDITURE

EU average: **2193 €***

highest in NL **3829 €***
lowest in RO **753 €***

* per capita / per year

0.6%
decrease each year since 2009

9%
decrease each year since 2009 in EL

Budget allocated to health, as % of GDP:

8.7% in 2012
7.3% in 2000

highest in NL **11.8%**
lowest in RO **5.6%**