

# Monitoring of national policies related to alcohol consumption and harm reduction

**Dr Lars Moller**  
**Programme Manager**  
**Alcohol and Illicit Drugs**

# Monitoring of the implementation of European and EU-level strategies and action plans

- Three databases:
  1. European Information System on Alcohol and Health
    - Survey during 2016
      - Include indicators to monitor the Action Plan on Youth Drinking and Heavy Episodic Drinking
  2. ATLAS (Resources for the prevention and treatment of substance use disorders)
    - Survey in 2015

# Monitoring of the implementation of European and EU-level strategies and action plans

- Three databases:
  3. Timeline database
    - Use data from previous data collections and most recent in 2015 and updates by all countries in 2016
    - Will go on-line later during 2016.

# Screening and brief intervention (SBI) train-the-trainer toolkit

- Develop a toolkit which can be used by all countries when introducing SBI
  - Power point presentations
  - Manuals
  - Videos
  - Material to be printed
- Expert meeting June 2016
- A final version to be tested in a Member State in early 2017?

# Report on alcohol-attributable deaths/alcohol policy in the EU

- The report will include profiles for EU MS with trends in alcohol-attributable mortality and policies
  - Based on data from EUSAH and the health for all database. Calculations will be made for specific disease and age groups and will include averages for the EU.
  - Will show trends in mortality from 1990 – 2015.
  - Some country examples will illustrate the links between policies, consumption and related harm.
  - Expected to be published during June 2017.

# Report on prevention of harm caused by alcohol exposure in pregnancy

- A report on the prevention of FASD (just published), which includes a literature review and good practice examples in EU and WHO European Region MS.



# Regional consultations

- Back to back to the 7th European Alcohol Policy Conference 22 – 23 November 2016
- Regional consultation on 24 November with a half day workshop on alcohol and pregnancy
- Invitations sent to all MS in early July. All CNAPA members are welcome to attend. Please register to the conference and let us know if also attending the Regional consultation on 24 November.
- Programme under development but WHO is also organizing one parallel session on harm-to-others at the conference.

# Report on the evaluation of the CNAPA action plan

- A report on the evaluation of the CNAPA action plan will be published based on survey data collected from project focal points.
- Use previous surveys in 2012, 2015 and 2016 and maybe we will ask for additional information from all CNAPA members.
- Will be launched in 2018.



**Published on 28  
September 2016**

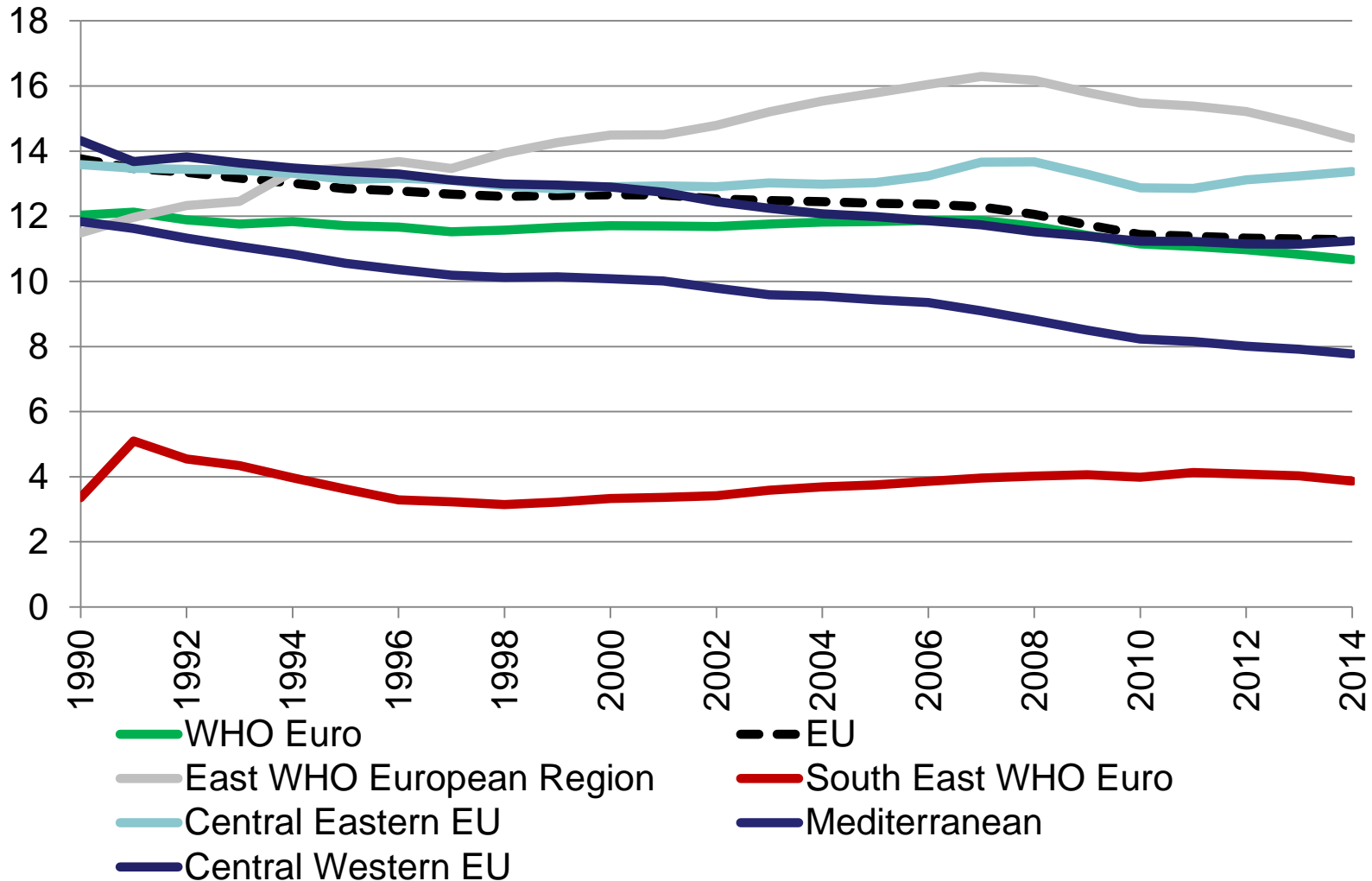
**Additional web-  
annex to be  
published early  
October 2016.**

## **Public health successes and missed opportunities**

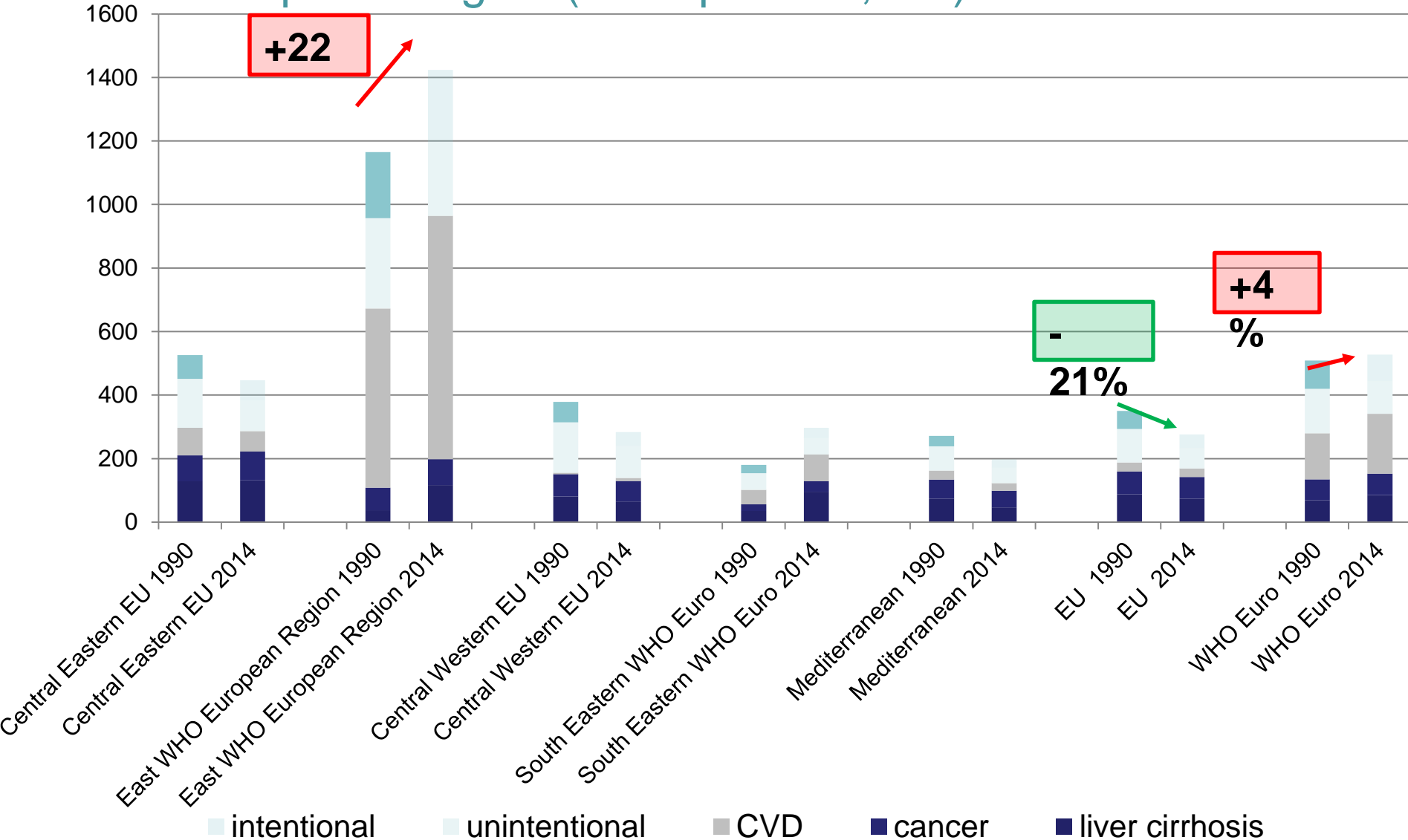
Trends in alcohol consumption and attributable  
mortality in the WHO European Region, 1990–2014



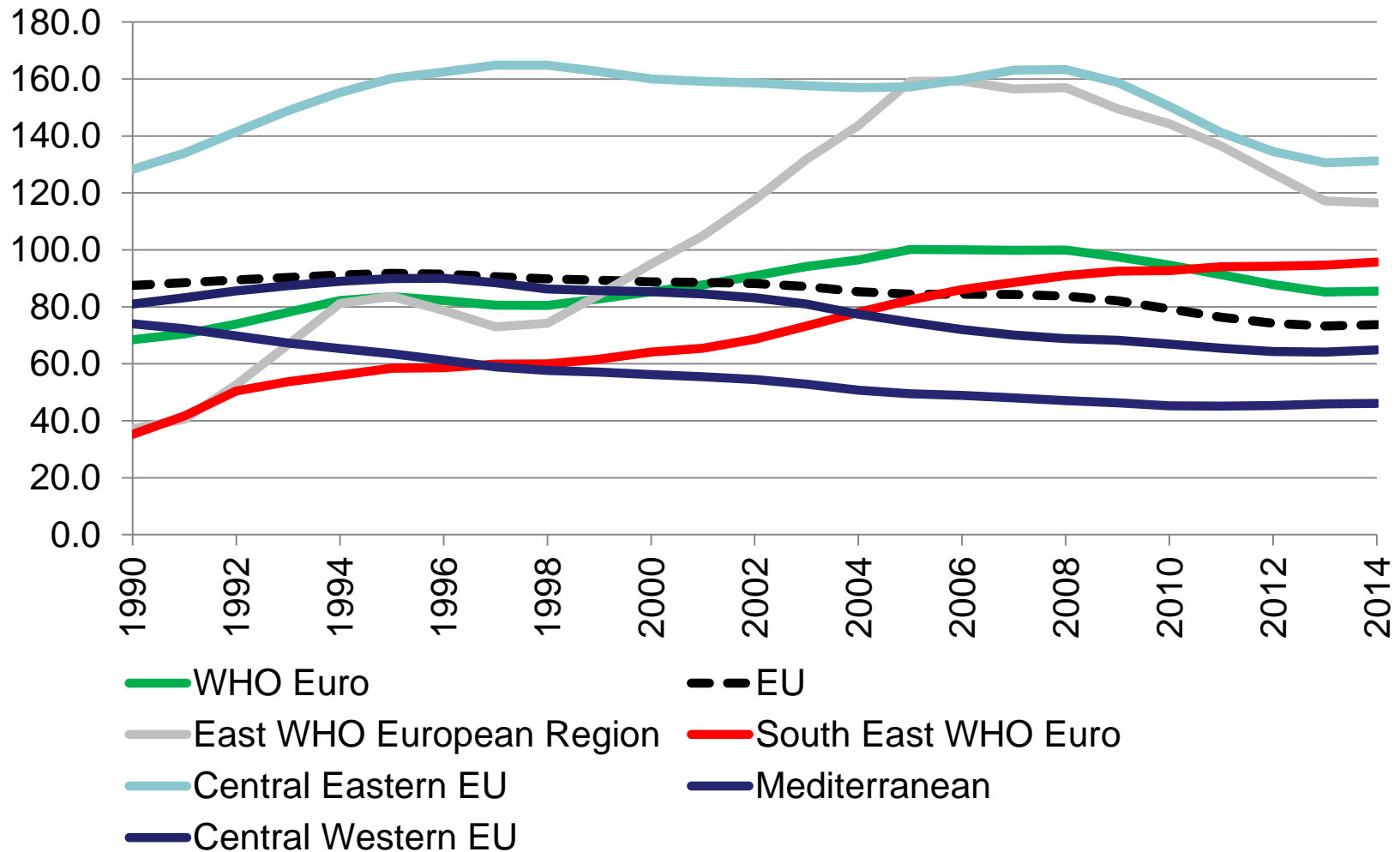
# Trends in adult per capita alcohol consumption in the WHO European Region and selected sub-regions, 1990-2014 (in litres of pure alcohol per year)



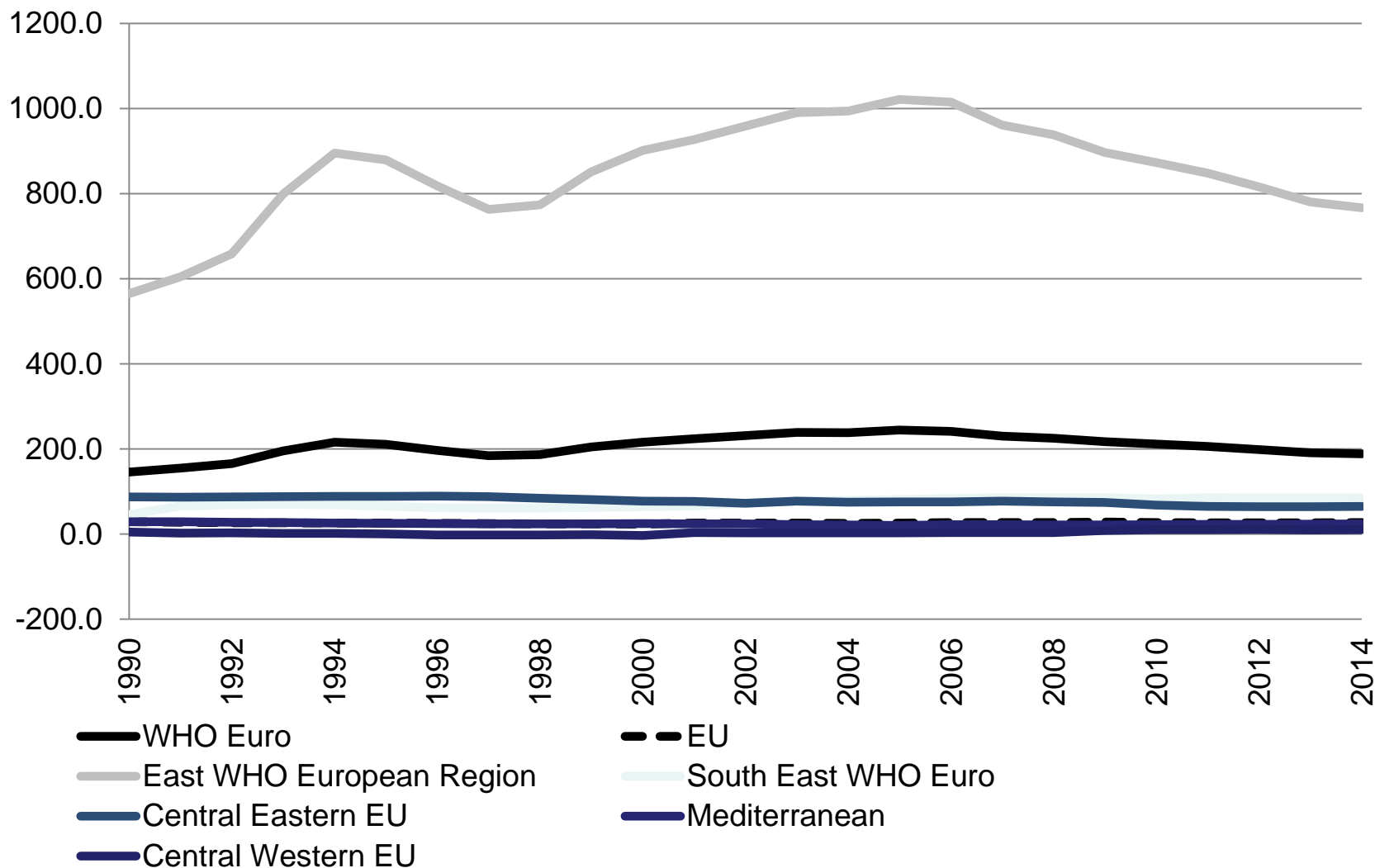
# Comparisons of standardized alcohol-attributable mortality for major causes of death, 1990 vs. 2014, in different parts of the WHO European Region (rates per 100,000)



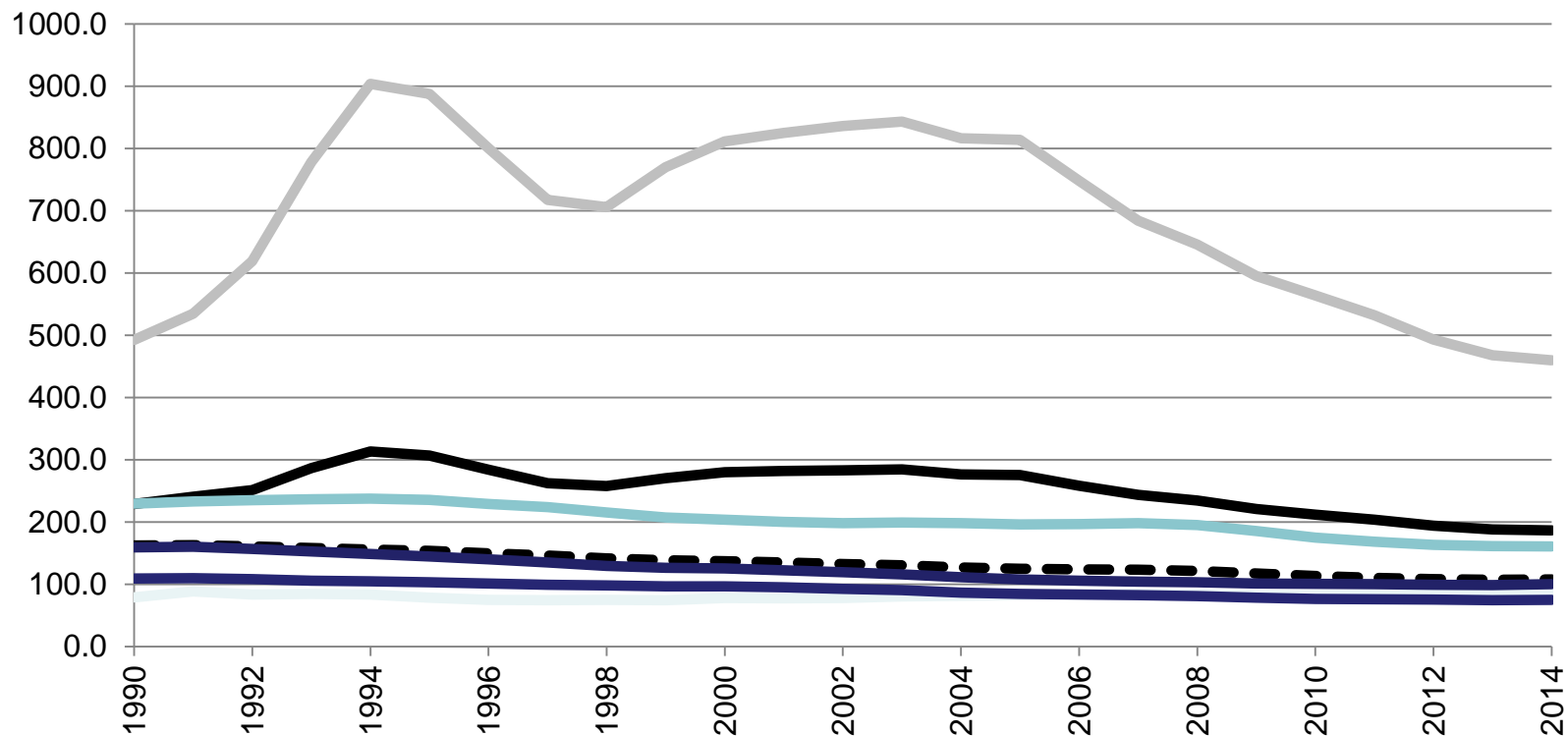
# Trends in age-standardized rates of mortality due to alcohol-attributable adult liver cirrhosis in the WHO European Region and selected subregions, 1990-2014 (rates per 1 000 000)



# Trends in age-standardized rates of mortality due to alcohol-attributable cardiovascular disease in the WHO European Region and selected subregions, 1990-2014 (rates per 1 000 000)

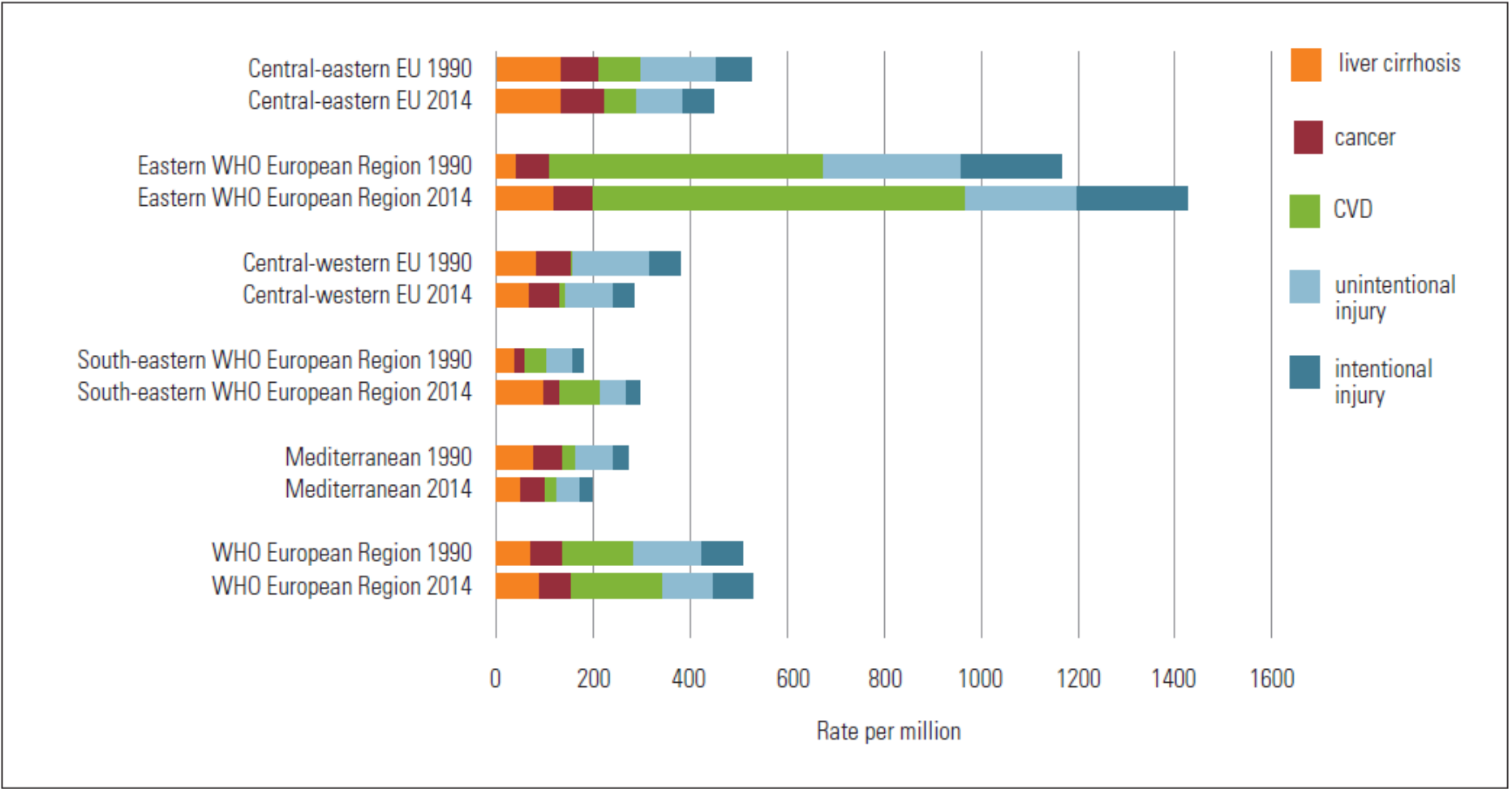


# Trends in age-standardized rates of mortality due to alcohol-attributable injury in the WHO European Region and selected subregions, 1990-2014 (rates per 1 000 000)

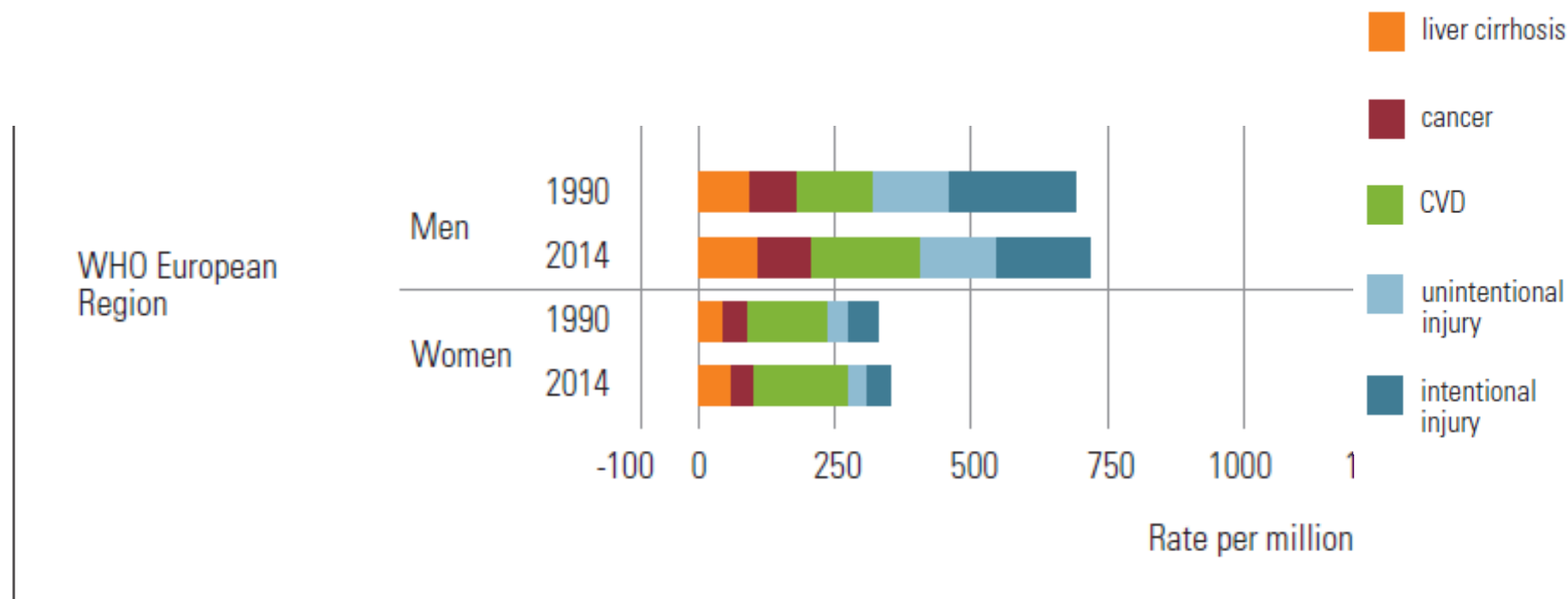


- WHO Euro
- East WHO European Region
- Central Eastern EU
- Central Western EU
- EU
- South East WHO Euro
- Mediterranean

**Fig. 72. Comparisons of age-standardized alcohol-attributable mortality for major causes of death, 1990 vs 2014, in the WHO European Region and selected subregions**



**Fig. 73. Comparisons of age-standardized alcohol-attributable mortality for major causes of death, 1990 vs 2014, by sex in the WHO European Region and selected subregions**





# ***Thank you!***

**Contact details:**

[mollerl@who.int](mailto:mollerl@who.int)

**Website:**

<http://www.euro.who.int/alcohol>

**European information system on alcohol and health:**

<http://who.int/gho/eisah>

