



European Reference Networks

**Highly Specialised Skills
in a new healthcare
environment**

**Enrique Terol
DG SANTE
Directorate D
European Commission**

The road to ERNs



Imagine if the best specialists from across Europe could join their efforts to tackle complex or rare medical conditions that require highly specialised healthcare and a concentration of knowledge and resources.



**THE
POWER
OF AN
IDEA**



Chapter IV Cooperation between MS Article 12 European Reference Networks

Networks of healthcare providers aiming at

Improving quality and safety and access to highly specialised healthcare

✓ **Patients affected by rare or low prevalence and complex diseases**

✓ **multidisciplinary approach (different specialities/areas of knowledge)**

✓ **Added value at EU level**

✓ **Need of cooperation:**

- **Scarcity knowledge**
- **Need education**
- **Complexity / high cost**
- **Effectiveness in resources use**



European
Commission

17.5.2014

EN

Official Journal of the European Union

L 147/71

What

COMMISSION DELEGATED DECISION

of 10 March 2014

setting out **criteria and conditions** that European Reference Networks and healthcare providers wishing to join a European Reference Network must fulfil

(Text with EEA relevance)

(2014/286/EU)

17.5.2014

EN

Official Journal of the European Union

L 147/79

COMMISSION IMPLEMENTING DECISION

of 10 March 2014

setting out **criteria for establishing and evaluating** European Reference Networks and their Members and for facilitating the exchange of information and expertise on establishing and evaluating such Networks

(Text with EEA relevance)

(2014/287/EU)

How

Entry into force 27 May 2014

Health and
Consumers

Key features of the Networks

- ✓ *Patient centered and clinically lead*
- ✓ *10 Members in at least 8 Countries*
- ✓ *Strong independent (3rd party) assessment*
- ✓ *Fulfillment of Network and Members criteria*
- ✓ *Endorsement and approval by National Authorities (grouping and strategic value)*





6 sets of Criteria for Networks



5 sets of general criteria for members



2 sets of specific criteria for members



Networks criteria and capacities



- ✓ *knowledge and **expertise to diagnose, follow up and manage patients***
- ✓ *Evidence of **good outcomes***
- ✓ ***multi-disciplinary** approach*
- ✓ *capacity to **produce good practice guidelines and to implement outcome measures and quality control***
- ✓ ***Research, teaching and training***
- ✓ *collaborate with **other centers of expertise and networks***



ERN challenges for the healthcare professionals

- *New needs*
- *New culture*
- *New ways of working*
- *New means*
- *New skills*

**Healthcare “traditional”
services in a new
environment**

Virtual services

Cultural differences

Multiple provider provision

Intangible



eHealth and ICT tools allowing the exchange of information and expertise between centres are key elements of the Networks

Some objectives of the ERN:

- ✓ help to exploiting innovations in medical science and health technologies
- ✓ to facilitate mobility of expertise, virtually or physically
- ✓ develop, share and spread information, knowledge and best practice
- ✓ foster developments of the diagnosis and treatment within and outside the networks;



New skills and means

"e-skills"

Digital Natives versus *Digital Immigrants* (born before 1980)

Digital Native

Digital Immigrants



'Health Professionals, it is time to upgrade your (e)Skills!'

ERN IT building blocks



Exchange of clinical information and patient data

- Data bases/data sharing/
- Patient registries

Communication and Conferencing tools

- Adobe Connect;
- Facebook like platforms
- Messaging etc.

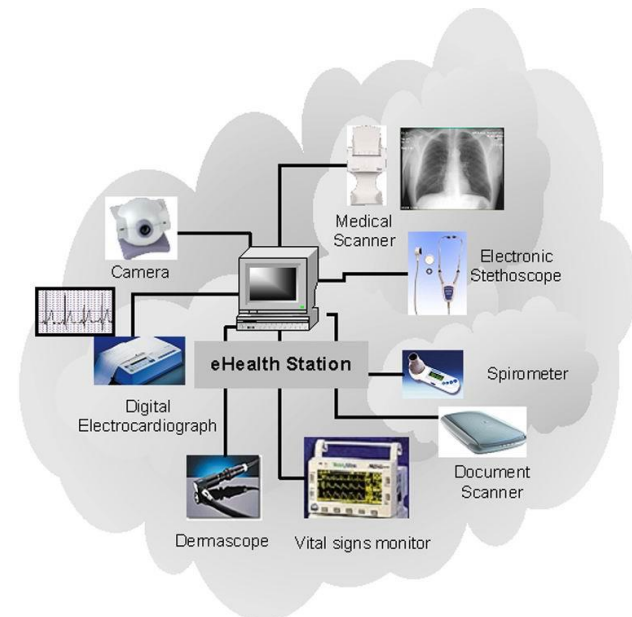
Clinical Decision making tools

- Clinical guidelines
- algorithms
- document repository
- collaborative tools (e-rooms etc.)

Exchange of Images, Xray, diagnostic tests, pictures etc (PACS)

Training and e-learning tools

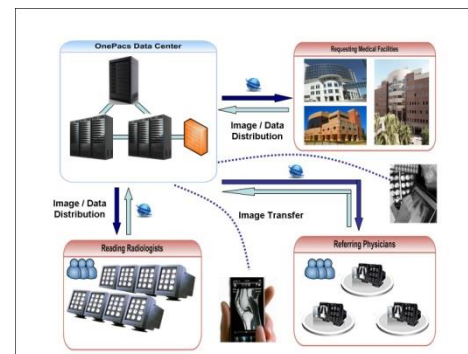
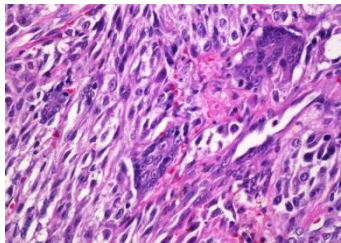
Research tools: clinical trials etc.





- Clinical and Tumour Boards are recognized as an essential component of excellence in cancer care and complex diseases.

- a range of medical disciplines across different settings and countries.



Tele-radiology
Tele-patology
Tele- ..etc..

eHealth Stakeholder Group Report

eSkills and Health Workforce

Final Version

10 November 2014

Issue Leader: Paul De Raeve, EFN

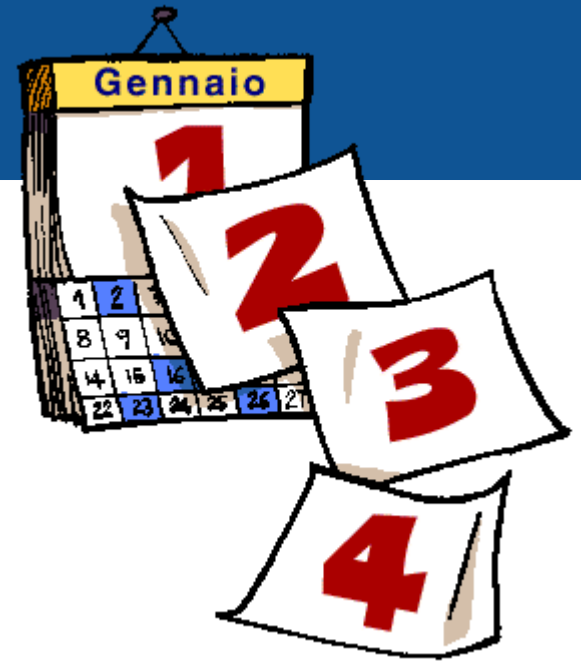


European
Reference
Networks



- There is an urgent need to embrace the entire health workforce, and upgrading the eSkills of all healthcare professionals, managing and/or delivering cure and care to patients and citizens, while following technological developments in a timely manner.
- eSkills of healthcare professionals need to be up-scaled and effectively integrated into their education and training at both undergraduate and postgraduate level as well as through Continuous Professional Development (CPD).
- The healthcare workforce needs to accommodate changes in the delivery of care with the use of eHealth and mHealth solutions which must be counterbalanced with cost-effective approaches to care.

Timeline for ERNs



February 2016



Call for Networks

2 quarter 2016



Assessment of proposals

3 quarter 2016



Establishment of Networks

Thank you!



Further information:
http://ec.europa.eu/health/ern/policy/index_en.htm