



state of world population 2015



SHELTER FROM THE STORM

A transformative agenda for women and girls
in a crisis-prone world

Global Health Policy Forum – 25 February 2016



The storm

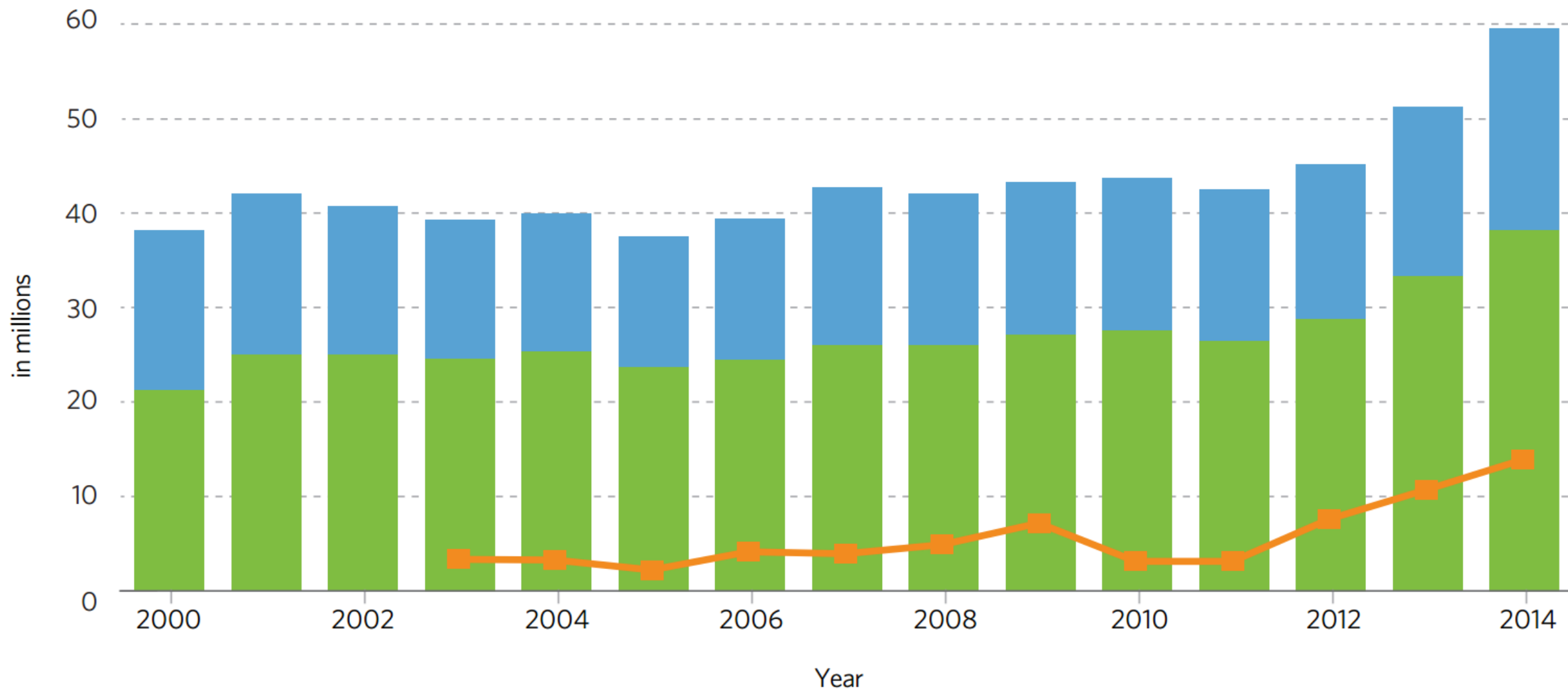
DISPLACEMENT IN THE 21ST CENTURY

2000 TO 2014

Internally displaced persons

Refugees and asylum-seekers


People newly displaced during the year*



(UNHCR, 2015)

* Displaced internally and across international borders. Newly displaced data available only since 2003.

WOMEN AND GIRLS ARE DISPROPORTIONATELY DISADVANTAGED

A photograph of a woman with a bandaged arm, looking distressed, is partially visible on the left side of the slide.

More than
100 MILLION
people in need of
humanitarian assistance,
**ONE QUARTER ARE
WOMEN AND GIRLS,
AGES 15 TO 49.**

At heightened risk of

- Sexually transmitted infections, including HIV
- Unintended, unwanted pregnancy
- Maternal death and illness
- Sexual- and gender-based violence



Weathering the storm

ESSENTIAL ACTIONS AND SERVICES FROM THE ONSET OF A CRISIS

PRIORITY SERVICES

- Emergency obstetric and newborn care
- Referral system for obstetric emergencies
- Supplies for clean and safe deliveries
- Contraception
- Condoms
- Anti-retrovirals
- Clinical care for survivors of rape

OBJECTIVES



Prevent maternal and infant mortality



Reduce transmission of HIV

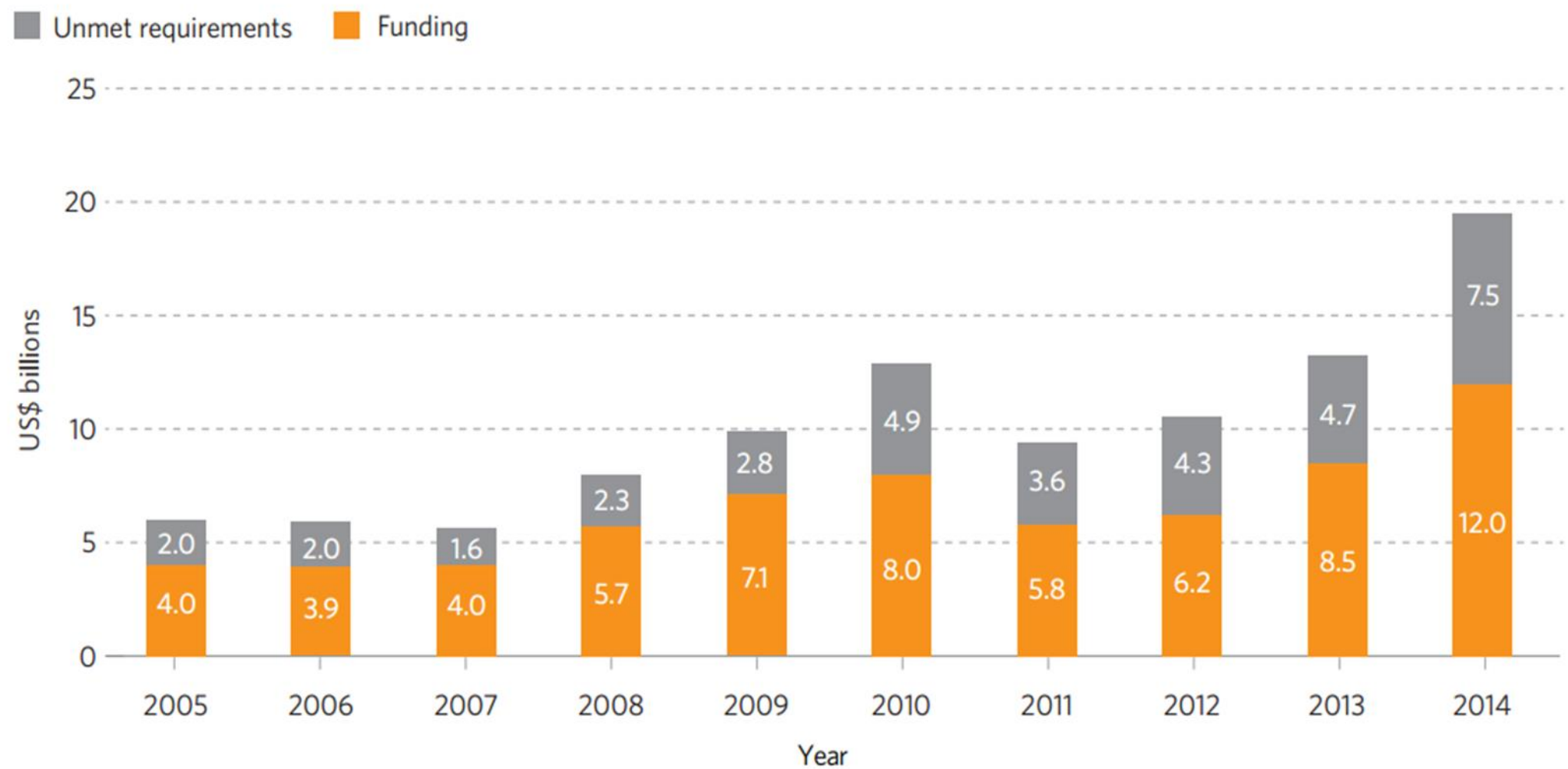


Prevent and manage the consequences of sexual violence



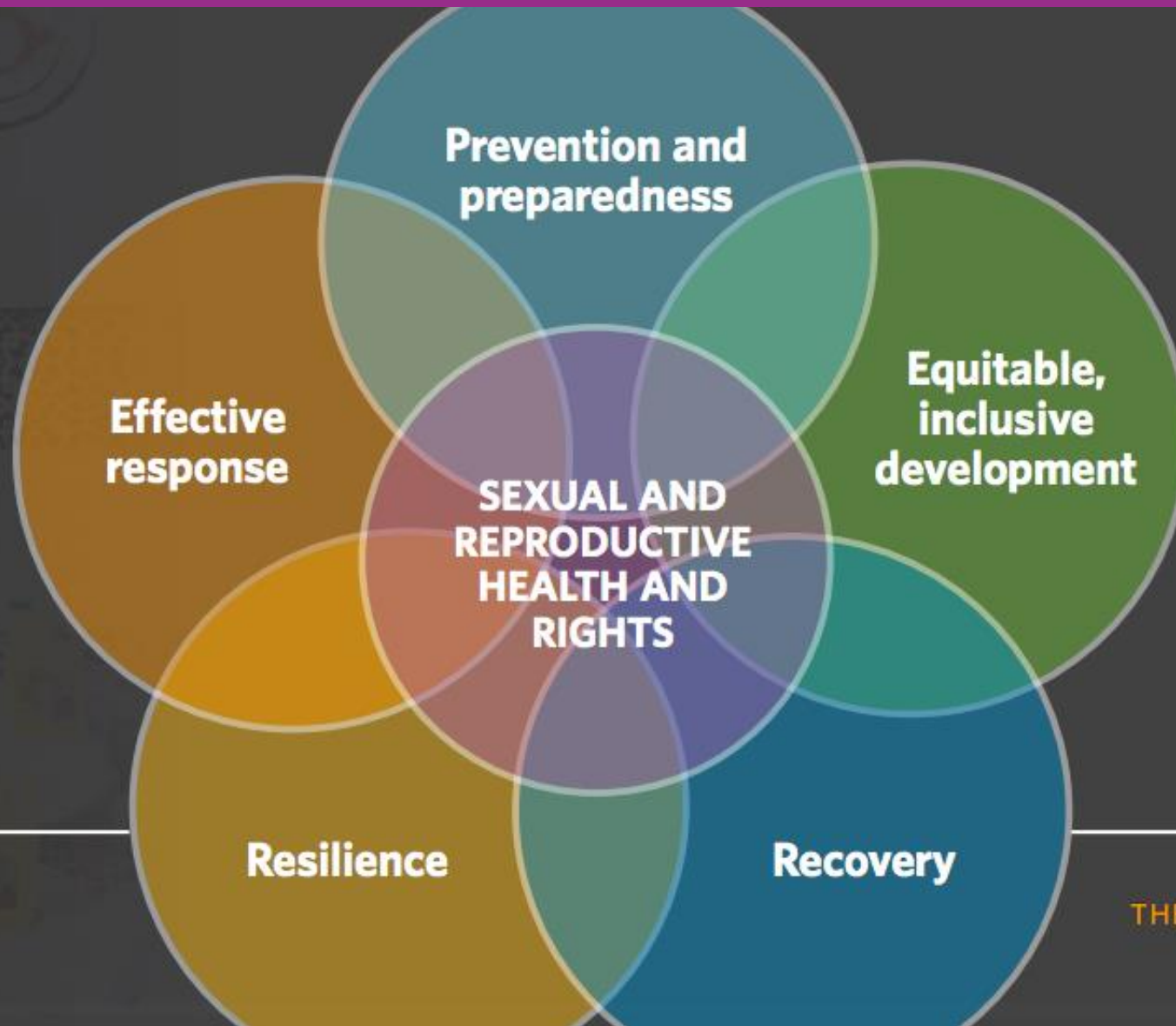
Build a better shelter

FUNDING AND UNMET REQUIREMENTS, UNITED NATIONS-COORDINATED APPEALS 2005 TO 2014



(Development Initiatives, 2015)

A NEW VISION FOR HUMANITARIAN ACTION



At the core of the interrelated elements of humanitarian action, from response to resilience and development, are sexual and reproductive health and rights

