



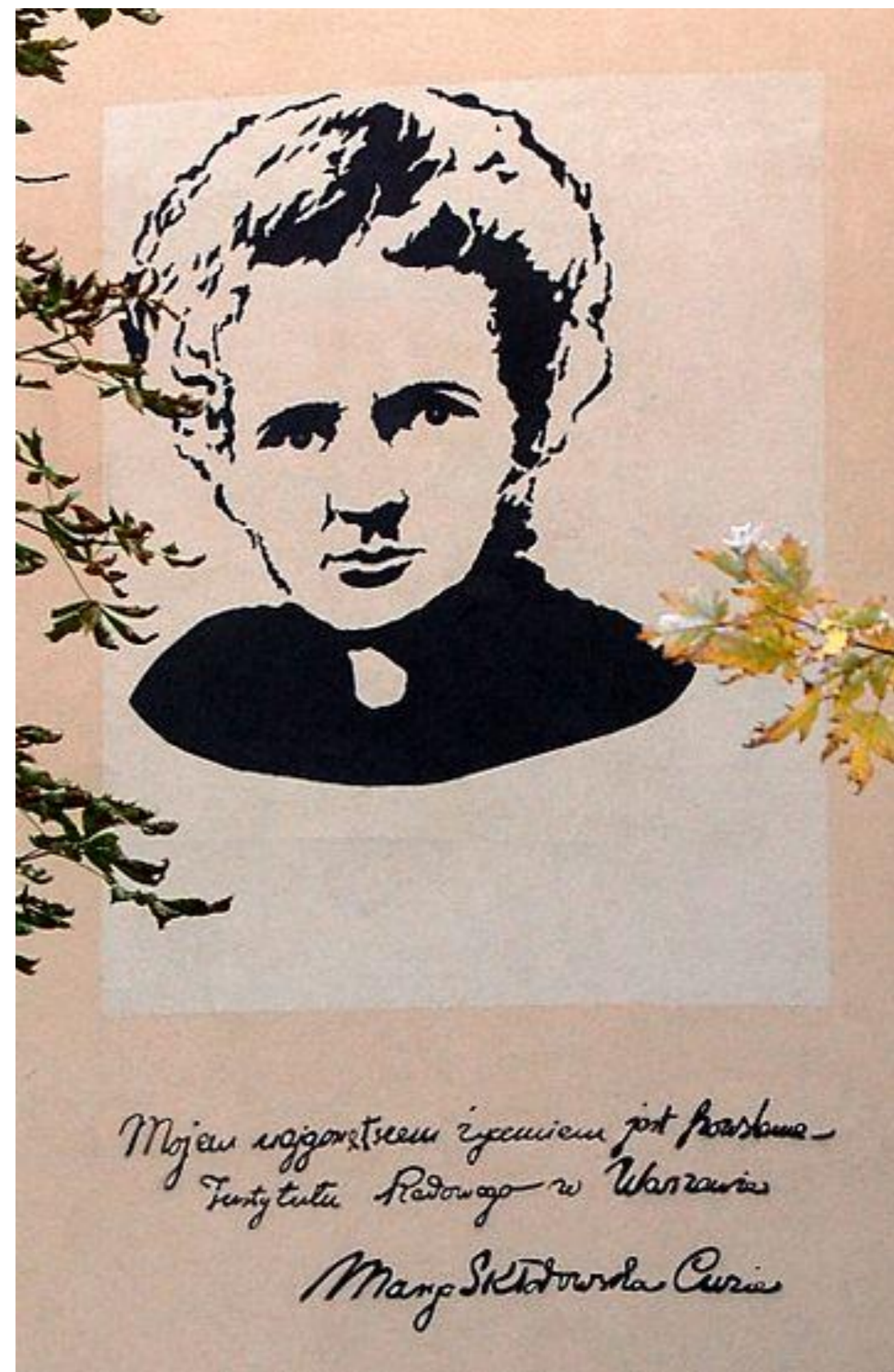
**Narodowy  
Instytut  
Onkologii**

im. Marii Skłodowskiej-Curie  
Państwowy Instytut Badawczy

# Maria Skłodowska-Curie National Research Institute of Oncology

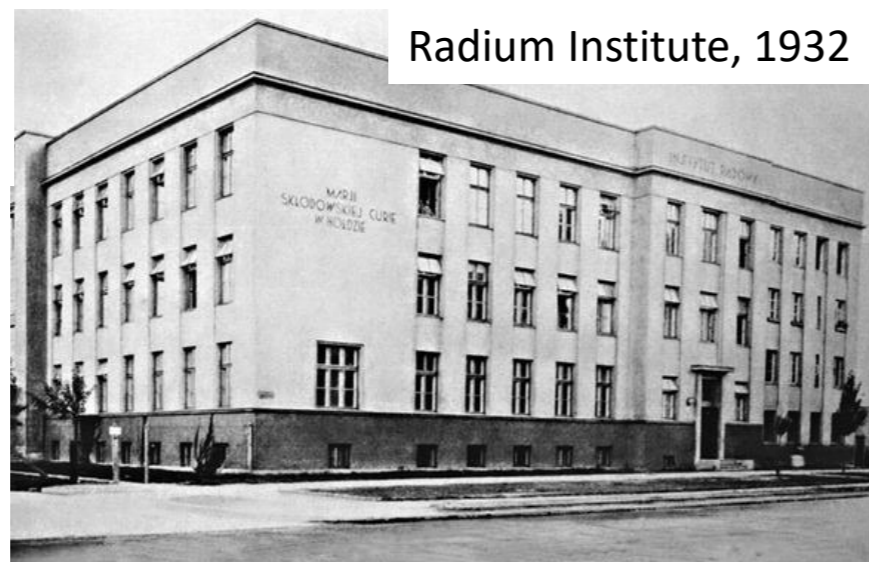
Warsaw, Poland

[www.pib-nio.pl](http://www.pib-nio.pl)



# „Independent Poland should have it's own Radium Institute” Maria Skłodowska-Curie, Chicago 1921

Maria Skłodowska Curie planting a tree during the opening ceremony of the Radium Institute, 1932



Radium Institute, 1932

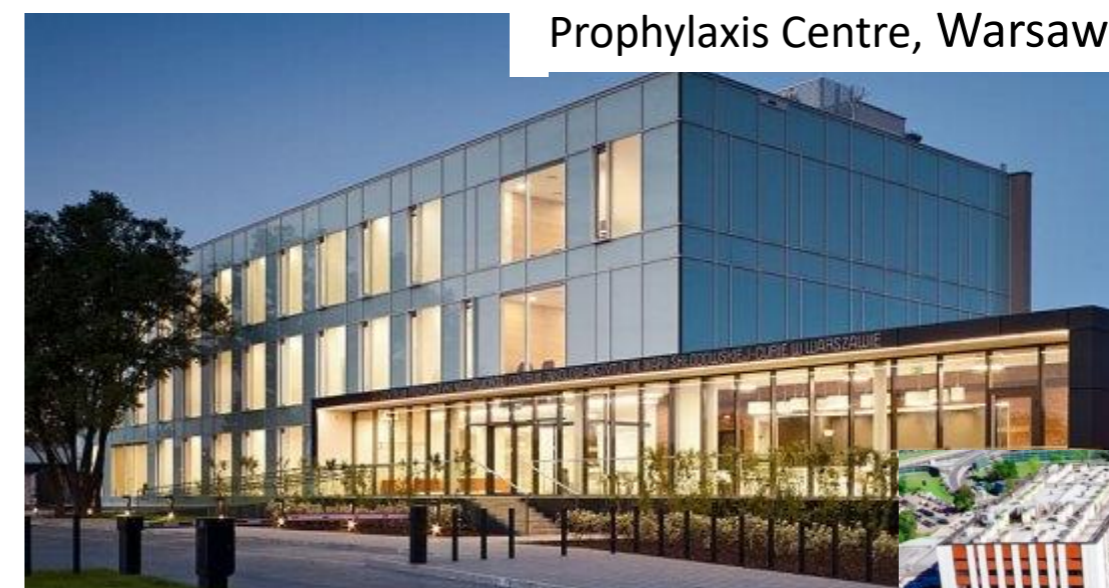


Headquarter 2020, Warsaw

Maria Skłodowska Curie's tree, 2020



MSCI, 2020



Prohylaxis Centre, Warsaw



Cracow Branch

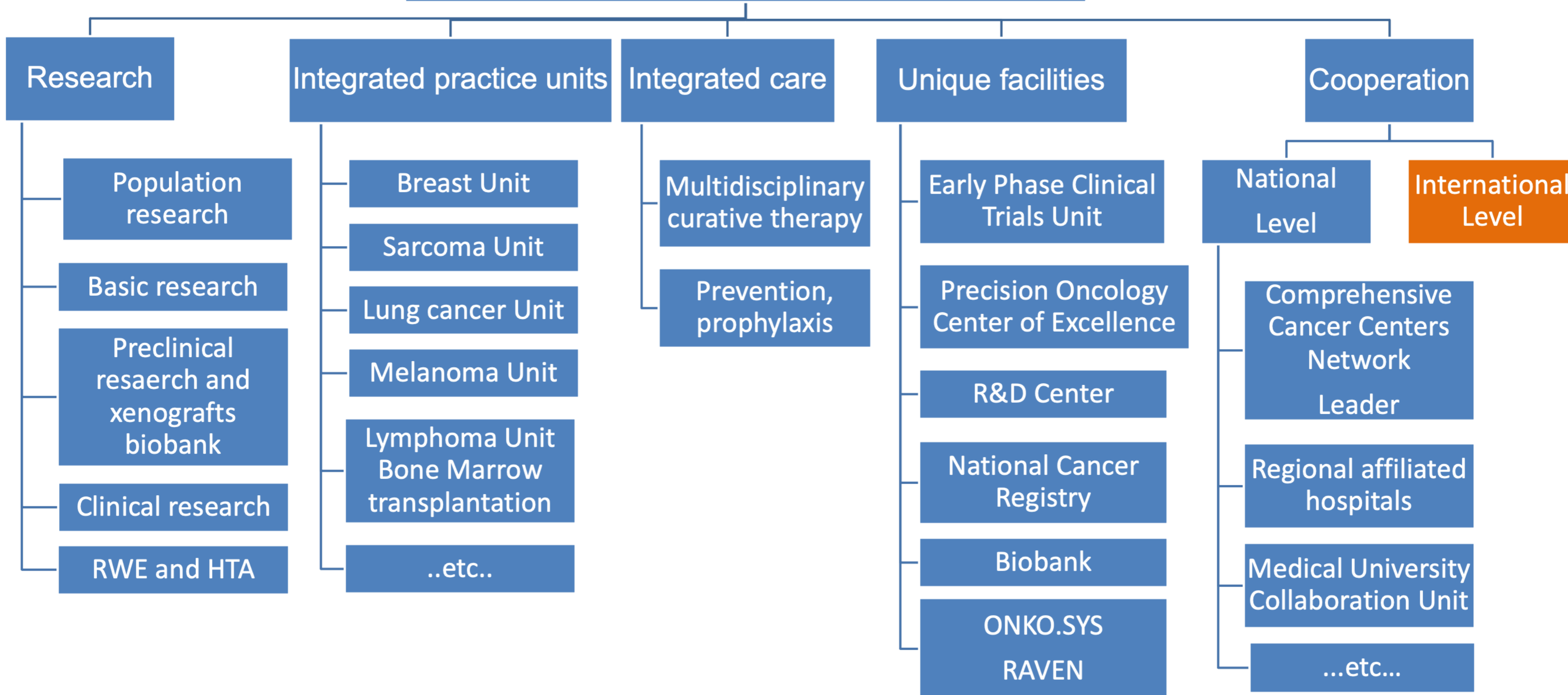


Gliwice Branch

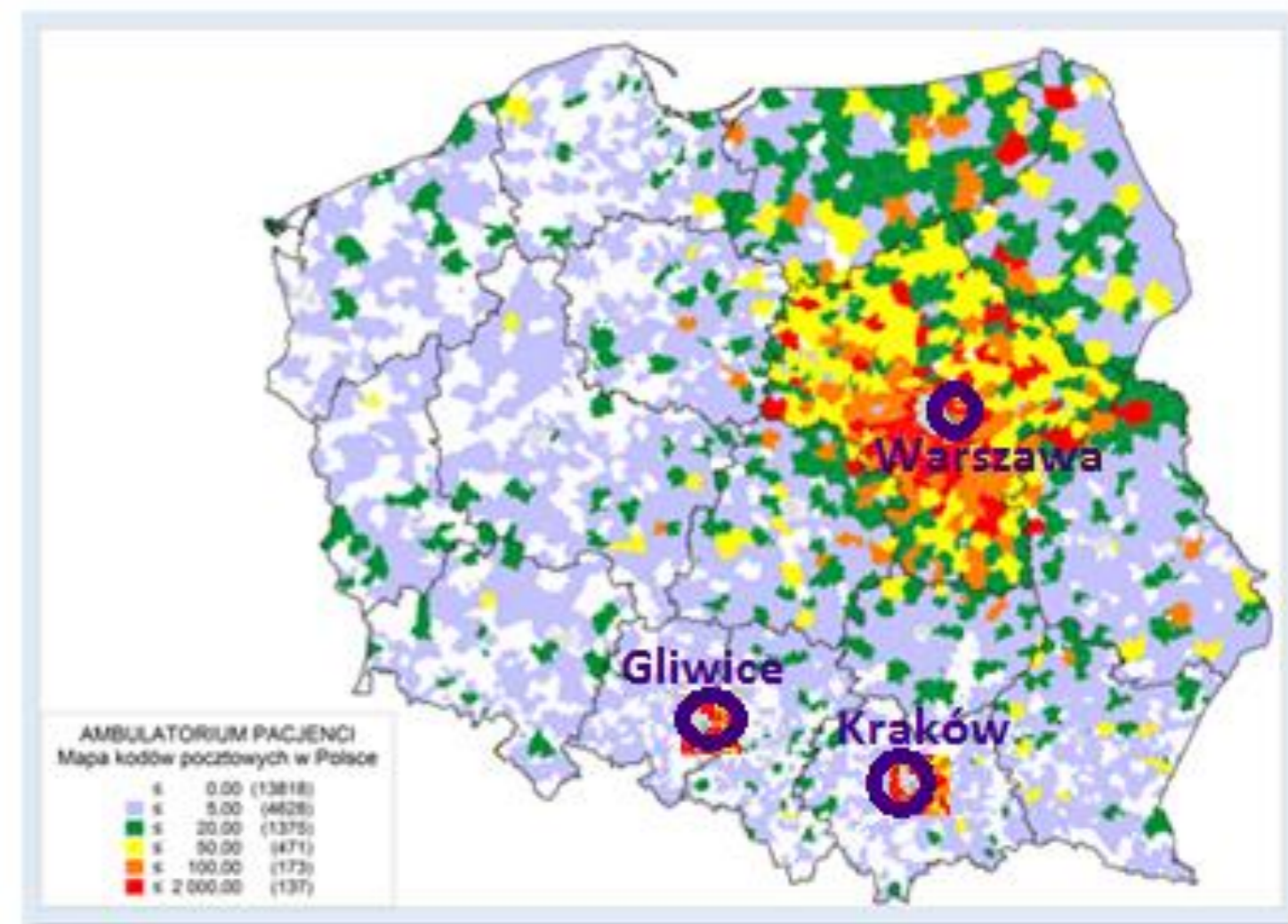
**Maria Skłodowska-Curie National Research Institute of Oncology  
is a leading and comprehensive cancer centre in Poland**

# Maria Skłodowska-Curie Research Institute of Oncology

## PRIORITIES



	Numbers per year
Outpatients consultations	680 000
Outpatient treatments	120 000
Cancer patient hospital admissions	130 000
Hospital beds	1 400
New patient referrals	50 000
Follow up patients	700 000
Clinical trials for oncology	> 220
Employees	> 5 000



# Maria Skłodowska-Curie National Research Institute of Oncology International Collaboration



**ORGANISATION OF EUROPEAN CANCER INSTITUTES / EUROPEAN ECONOMIC INTEREST GROUPING**

**Membership Certificate**  
Year 2021

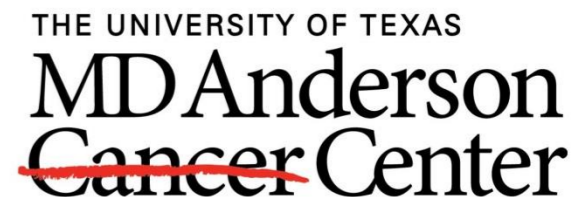
This certifies that  
**Narodowy Instytut Onkologii im. Marii Skłodowskiej-Curie Państwowy Instytut Badawczy**  
Warsaw - Poland  
is a registered Full Member ID 129

With the view of developing affordable and realistic solutions to effectively combat cancer and to improve the quality of life for patients, the OECEI mission is to bring together EU cancer research and care institutions to create a critical mass of expertise and competence supporting the development of personalised care.

President: **Thierry Philip**  
Executive Secretary: **Giovanni Apolone**

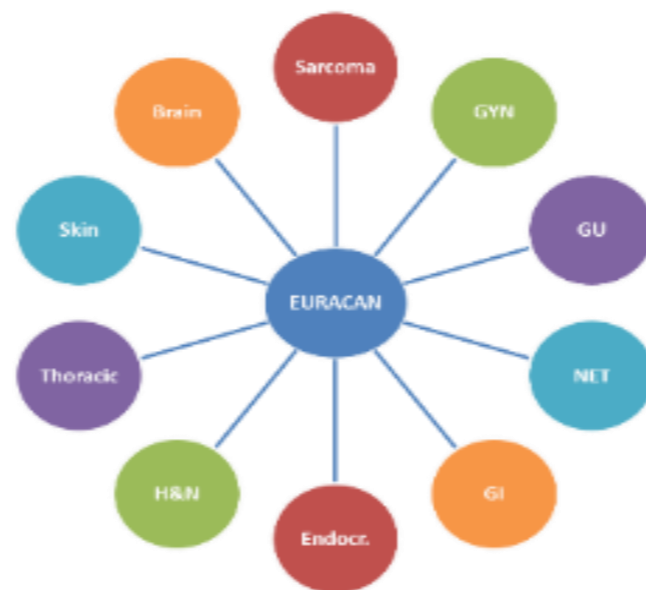


nsive



Making Cancer History®

# Maria Skłodowska-Curie National Research Institute of Oncology International Collaboration



**EuroBloodNet**  
European Reference  
Network on Rare  
Hematological Diseases.

**EURACAN**  
European network for Rare  
adult solid Cancer

**EndoERN**  
a European Reference  
Network for Rare  
Endocrine Conditions



- Improvement of the quality of care for all European citizens affected by rare cancers
- Assurance of an optimized and homogenous cancer care and access to innovation in EU
- The Network of Leading Institutions from the EU member states



**European  
Reference  
Networks**

# Maria Skłodowska-Curie National Research Institute of Oncology

## Integration of clinical practice with basic science at the Institute

### Preclinical research



Immune deficient mouse models for heterotransplants of human cancers - platforms for pre-clinical studies

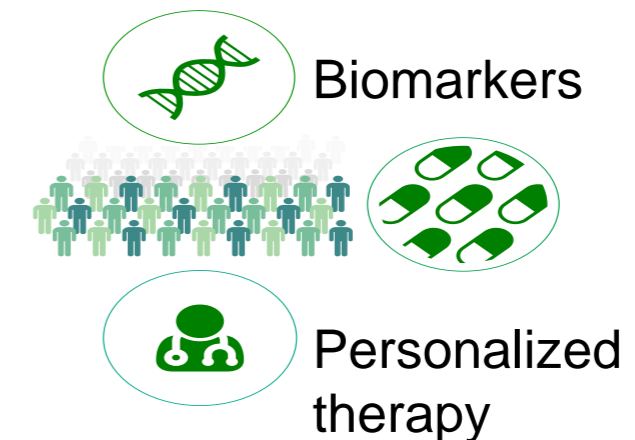
### Clinical research

Clinical Trials  
>200 ongoing

### Basic research

- Molecular and Translational Oncology
  - Genetics
  - Immunology
- Regenerative Medicine

### Transitional research



### MSRCI biobank



Blood/tissues  
Histopathology  
Patient's medical history

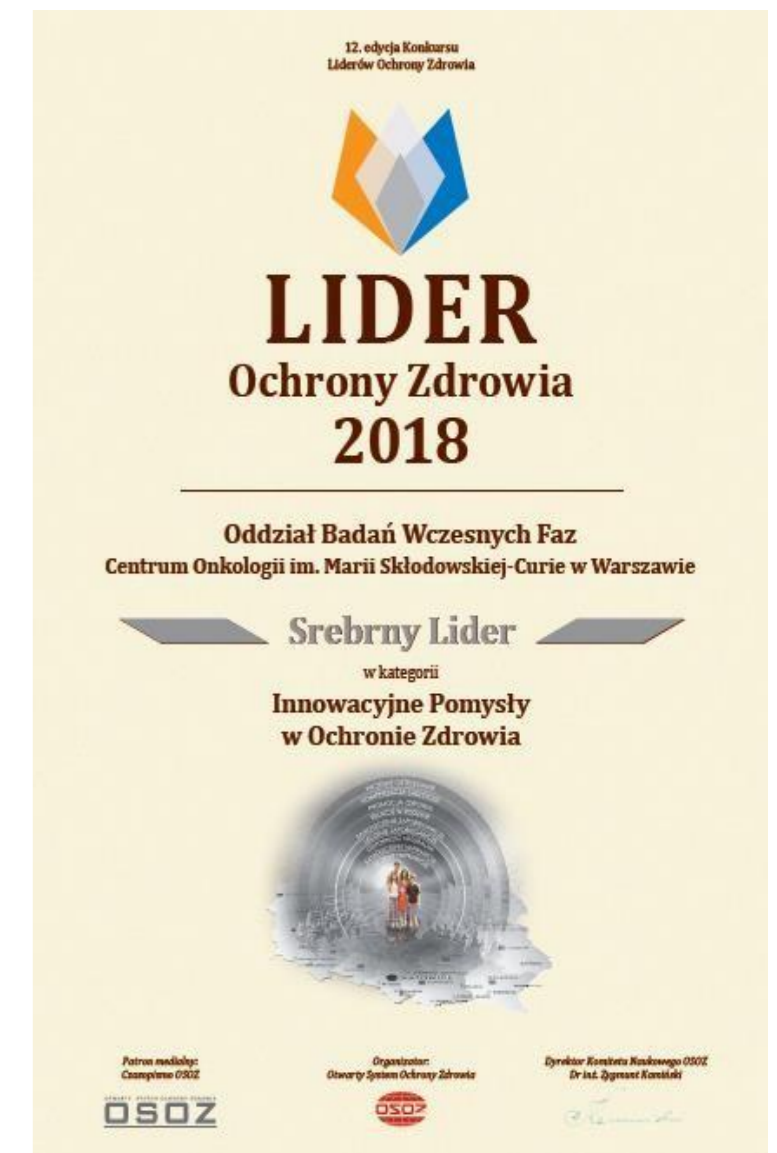
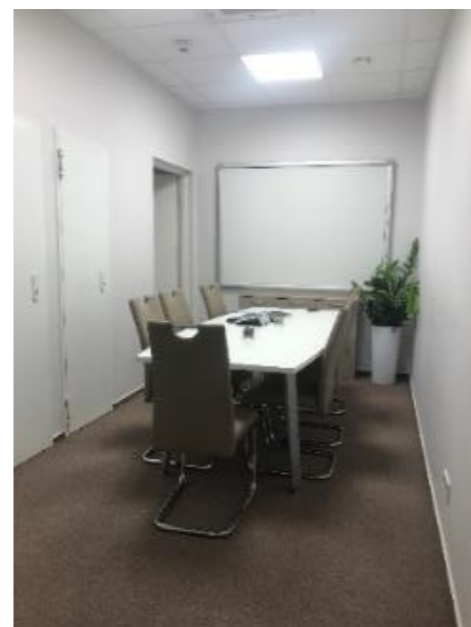
### Clinical Departments

Soft Tissue/Bone Sarcoma and Melanoma,  
Nervous System Tumors, Gynecological,  
Oncology, Urological Oncology, Breast Cancer  
and Reconstructive Surgery, Lymphoid  
Malignancies, Gastrointestinal Oncology,  
Head and Neck Cancer,  
Endocrine Malignancies and Nuclear Medicine  
Cardiooncology and Palliative care

# Maria Skłodowska Curie National Research Institute of Oncology

## Clinical trials for oncology – early phases

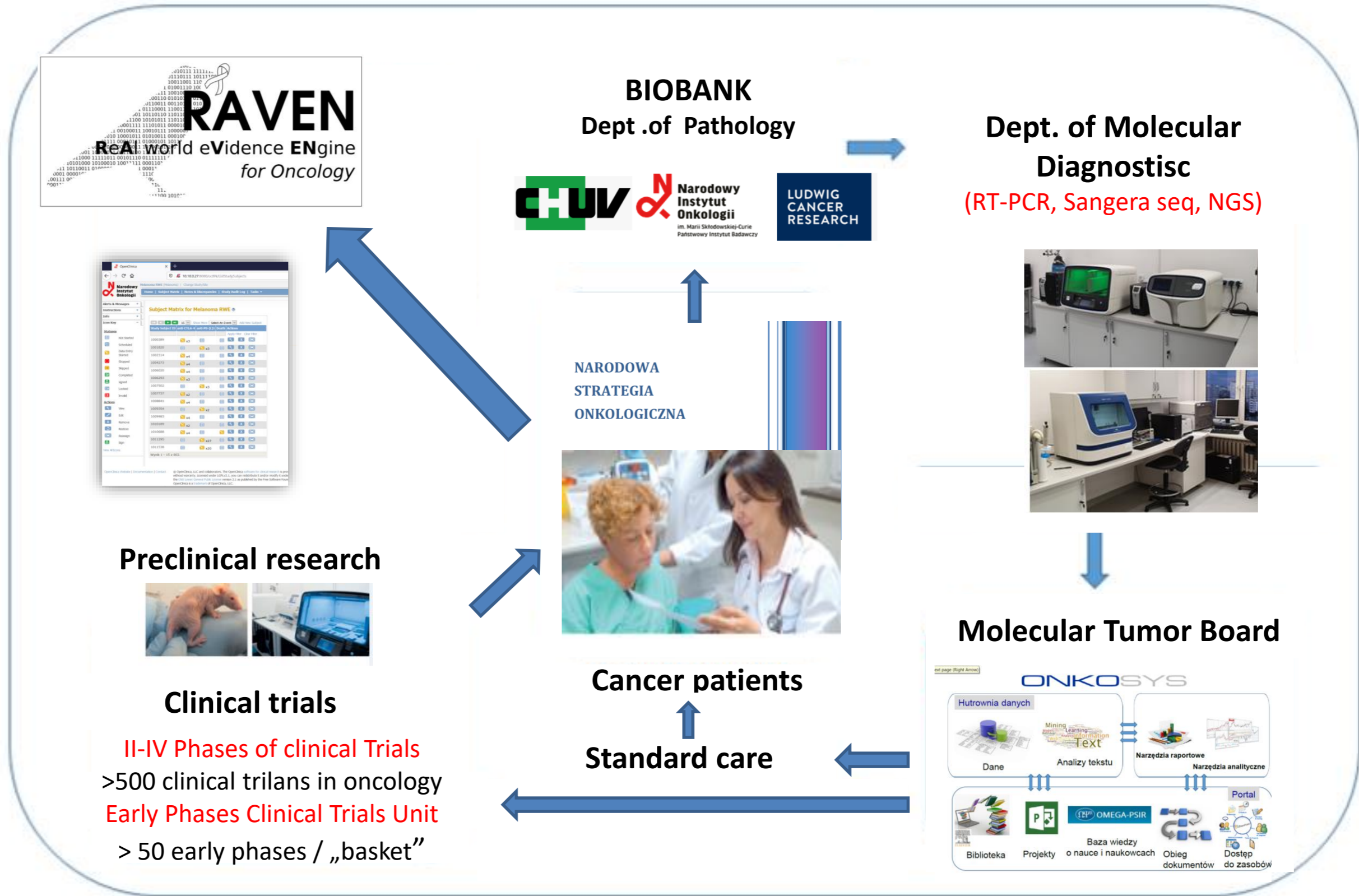
In Poland, the first facility solely dedicated to the early phases clinical trials for oncology opened in Juny 2017  
**>50 early phase trials**





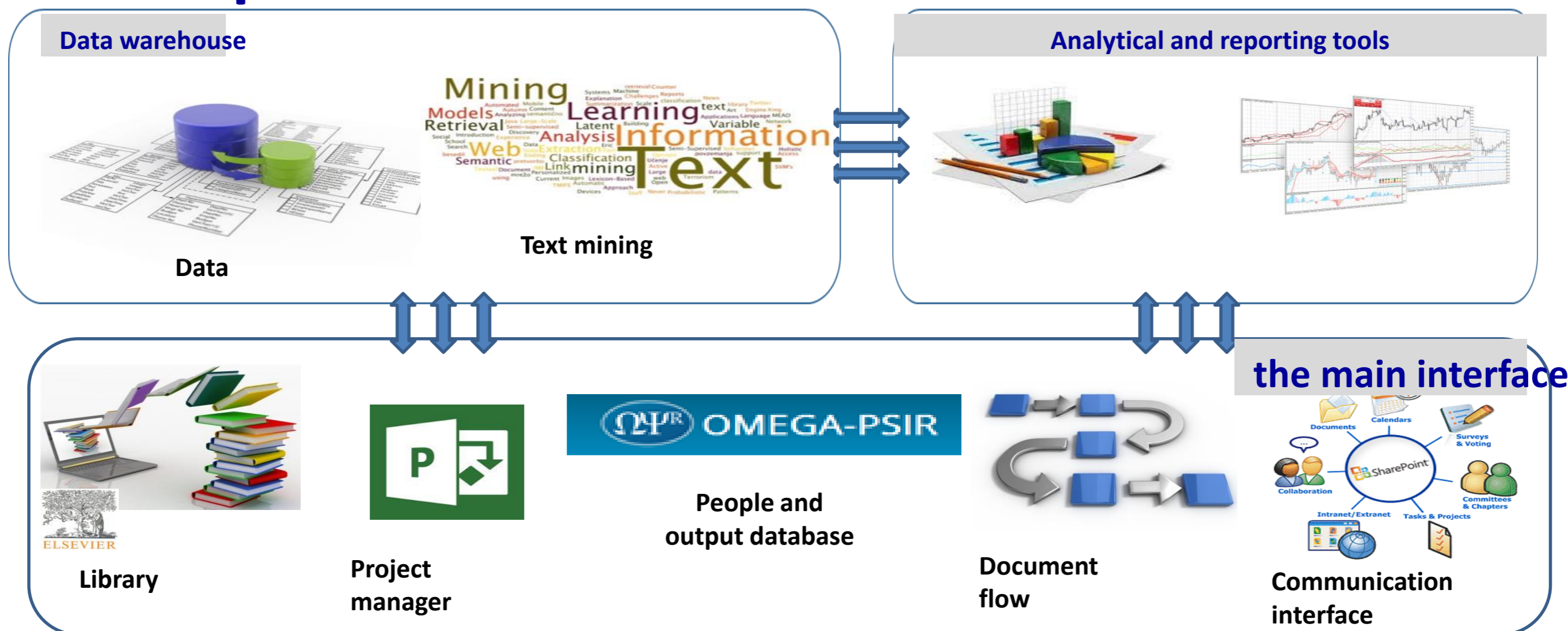
# Maria Skłodowska-Curie National Research Institute of Oncology

## Centre for Excellence in Precision Oncology





## A Comprehensive IT Platform for Cancer Research



# Maria Skłodowska Curie National Research Institute of Oncology

## International Collaboration - Education and guidelines



### Gastrointestinal stromal tumours: ESMO–EURACAN Clinical Practice Guidelines for diagnosis, treatment and follow-up <sup>FREE</sup>

P G Casali, N Abecassis, H T Aro, S Bauer, R Biagini, S Bielack, S Bonvalot, I Boukovinas, J V M G Bovee, T Brodowicz ... [Show more](#)

### Soft tissue and visceral sarcomas: ESMO–EURACAN Clinical Practice Guidelines for diagnosis, treatment and follow-up <sup>FREE</sup>

P G Casali, N Abecassis, H T Aro, S Bauer, R Biagini, S Bielack, S Bonvalot, I Boukovinas, J V M G Bovee, T Brodowicz ... [Show more](#)

*Annals of Oncology*, Volume 29, Issue Supplement\_4, October 2018, Pages iv268–iv269,  
<https://doi.org/10.1093/annonc/mdy321>

**Published:** 03 October 2018

### Bone sarcomas: ESMO–PaedCan–EURACAN Clinical Practice Guidelines for diagnosis, treatment and follow-up <sup>†</sup> <sup>FREE</sup>

P G Casali, S Bielack, N Abecassis, H T Aro, S Bauer, R Biagini, S Bonvalot, I Boukovinas, J V M G Bovee, B Brennan ... [Show more](#)

[Author Notes](#)

*Annals of Oncology*, Volume 29, Issue Supplement\_4, October 2018, Pages iv79–iv95,  
<https://doi.org/10.1093/annonc/mdy310>

**Published:** 03 October 2018

**ZALECENIA POSTĘPOWANIA**

DIAGNOSTYCZNO-TERAPEUTYCZNEGO W NOWOTWORACH ZŁOŚLIWYCH 2019 ROK



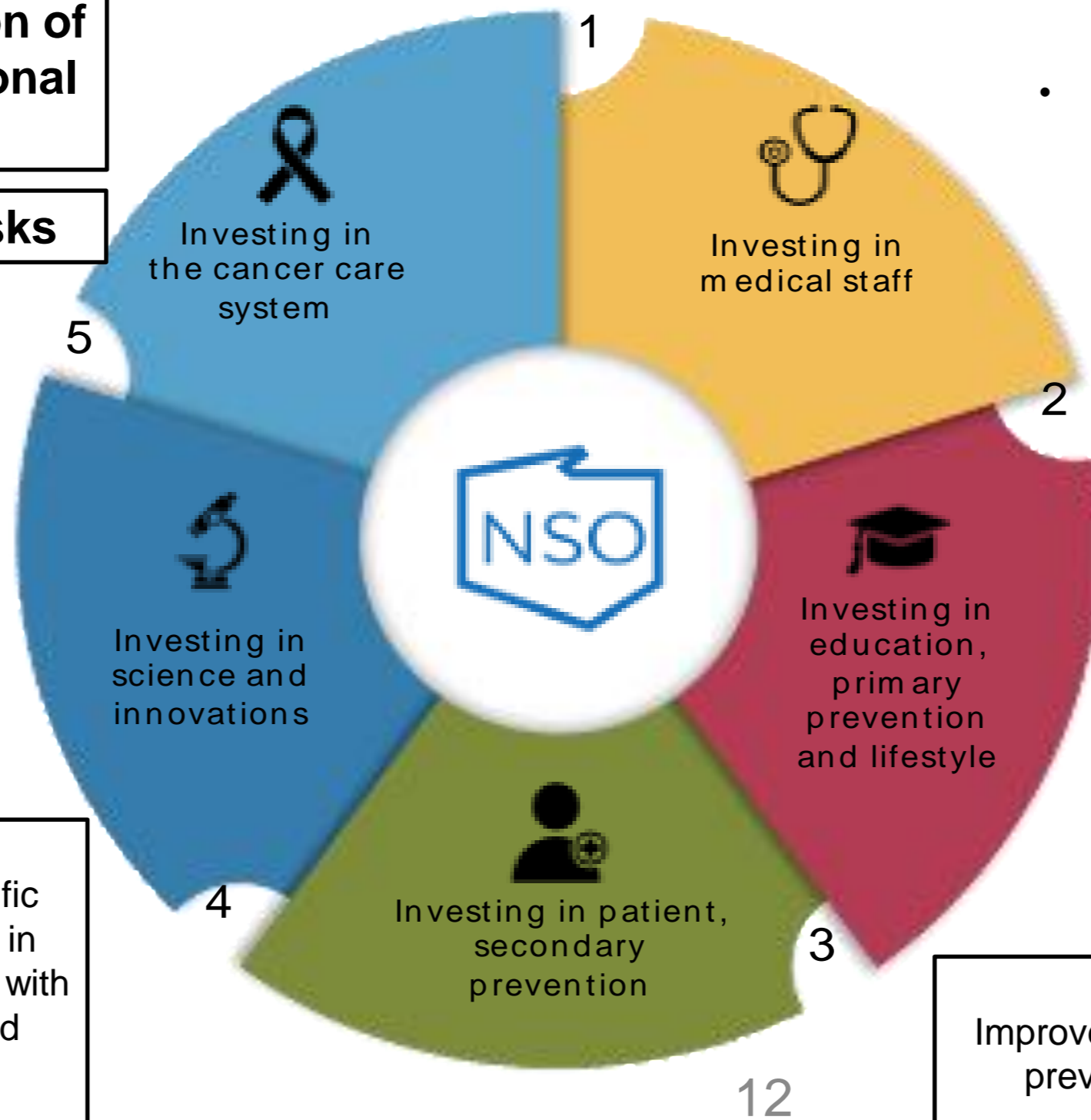
# Maria Skłodowska-Curie National Research Institute of Oncology

## Strategic projects - National Cancer Plan (scheme)

**MSCNRIO is responsible for monitoring and coordination of implementation of the National Cancer Plan**

**5 areas, 28 activities, 99 tasks**

- **30 November 2019:** submission to Council of Ministers
- **Beginning of February 2020:** final version signed by Prime Minister of Poland



**Scope 1**  
Improvement of the staff's situation and quality of education in oncology

**Scope 2**  
Decreasing cancer incidence through a reduction of risk in cancer primary prevention

**Scope 3**  
Improvement of the secondary prevention effectiveness

**Scope 4**  
Increasing the potential of scientific research and innovative projects in Poland in order to provide patients with the most effective diagnostic and therapeutic measures

**Scope 5**  
Improvement of cancer care system structure through providing patients with organizational conditions enabling the highest quality of diagnostic and therapeutic processes as well as comprehensive care across the entire "patient path".

***„The Institute discovers new knowledge in oncology and defines standards of care in support of the national comprehensive cancer control plan.”***

