

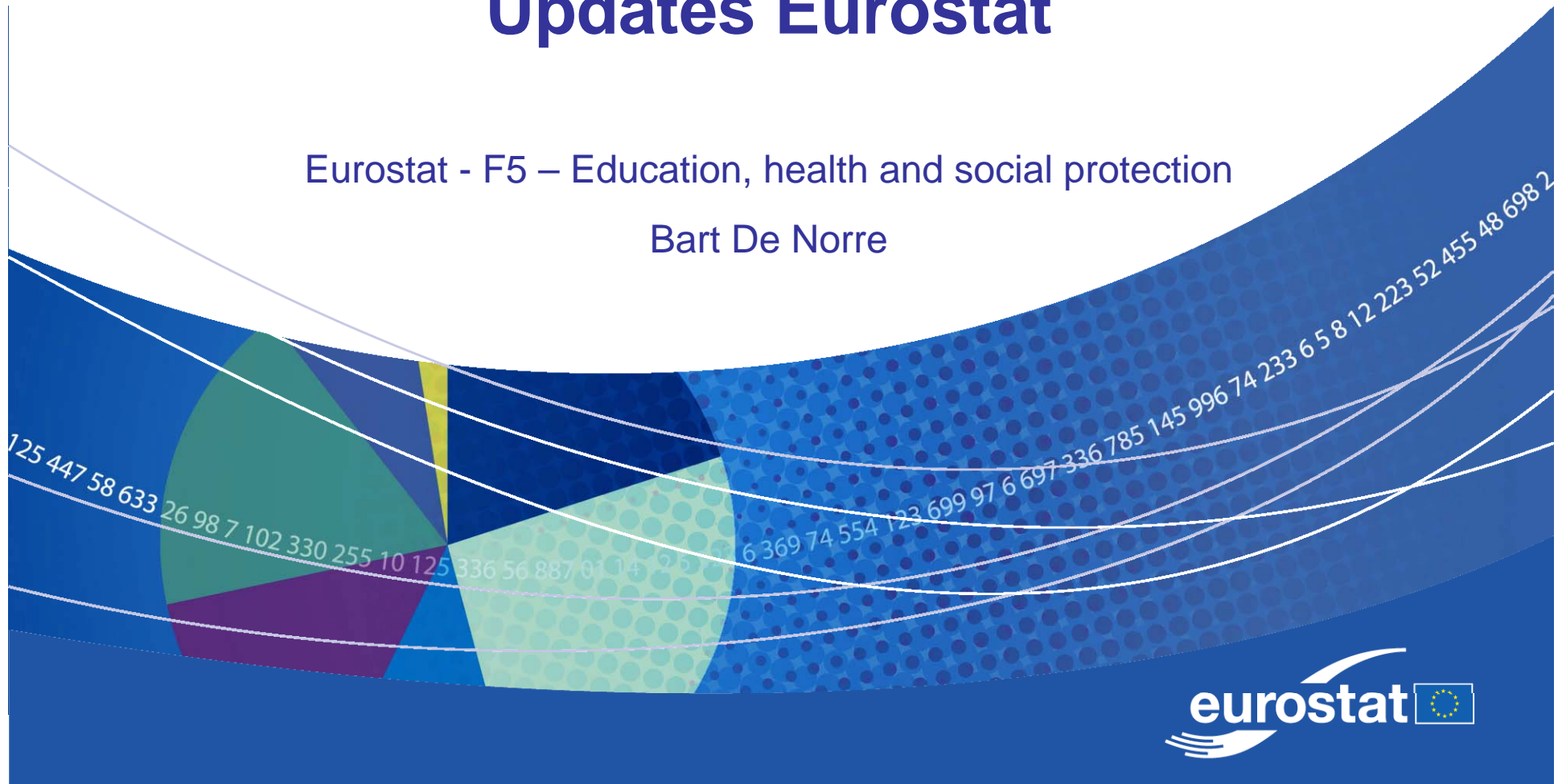
# Experts Group on Health Information

29 May 2013

## Updates Eurostat

Eurostat - F5 – Education, health and social protection

Bart De Norre



# Overview

- Intro
- Causes of death
- Health care non-expenditure
- Health care expenditure
- Morbidity
- SILC – health and HLY
- EHIS wave 1 and 2
- Employment of disabled persons - LFS AHM 2011
- EHSIS (Health and social integration)
- Other

# introduction

## ■ Annual work Programme 2013:

[http://epp.eurostat.ec.europa.eu/portal/page/portal/pgp\\_ess/0\\_DOCS/estat/EN\\_annexe\\_acte\\_autonome\\_0.pdf](http://epp.eurostat.ec.europa.eu/portal/page/portal/pgp_ess/0_DOCS/estat/EN_annexe_acte_autonome_0.pdf)

### –New work:

costs of specific diseases, development of health indicators, e-certification of death

### –On-going work:

Public health and Health and safety at work statistics, development regulation health care expenditure, methodology morbidity

## ■ meetings for 2013

–WG Public Health delayed: 2/3 December

–DSS 7/8 October

# Causes of Death - COD

- Commission Regulation 238/2011 – 5 April 2011
  - First reference year: 2011 (to be submitted by end of 2013)
- Data dissemination following the revised COD shortlist and the revised standard population as agreed at the WGPH meeting in October 2012:
  - Revision of the Eurostat database is on-going
  - Revised data will be available by summer 2013
  - Results of the TF, 'Standard Population Revision' will be published as a working paper by next month
- TF Satellite lists:
  - The TF met twice and will present a proposal for satellite lists that should be disseminated for complementing the COD shortlist
  - Time table:
    - Draft report with satellite lists to the TG COD by June 2013 (written procedure)
    - Presentation to the WG PH for discussion and agreement in December 2013

# Health Care non-expenditure statistics

## ■ Annual Joint data collection with OECD and WHO – new features for the 2013 data collection (reference year 2011):

- Inclusion of health care activities into the Joint Questionnaire with respective harmonisation of definitions for ambulatory care, hospital care and procedures
- Additional data on
  - Emission Tomography exams (PET; in addition to CT and MRI exams)
  - Cancer screening for breast and cervical cancer (to be later extended to colon cancer)
  - Doctors/dentists consultations

## ■ Data dissemination by August 2013

# Health Care expenditure statistics

- Annual Joint Questionnaire (OECD, ESTAT, WHO)
- Eurostat to develop a Commission Regulation on health care expenditure data by end of 2013
  - June 2012: ESTAT presented a respective first draft IR for discussion to the TG CARE.
  - TG CARE concluded to revise its earlier decision and asked Eurostat for a second draft IR that should be directly in line with the SHA 2011 manual, thereby in line with an OECD/WHO proposal
  - 2013: Pilot testing of Implementing Regulation variables by 6-7 member States and setup of a Task Force
  - 2015: JHAQ-SHA2011 transmission under gentlemen's agreement
  - 2016: JHAQ-SHA2011 transmission under new IR

# Morbidity Statistics from administrative sources

- Task Force on diagnosis-specific morbidity statistics since November 2011
- Objectives
  - Analyse results of pilot studies by 16 Member States (2005-2011) in view of best comparable estimates
  - Provide conclusions and recommendations for next steps towards a regular data collection within the European Statistical System (ESS)
- Draft report sent to TG MORB on 23 May 2013
- First results
  - Diagnosis-specific statistics at EU-level from administrative data are feasible
  - Best estimates are strongly related to information from different sources, either in view of care data on hospital inpatients, outpatients plus ambulatory care or in view of combining information from health care and causes of death data
- Schedule:
  - Discussion with TG MORB at the TG MORB meeting on 11-12 June 2013
  - Presentation th WGPH in December 2013

## 2013 projects on data from administrative sources

- Health Expenditure by Diagnosis and Condition (HEDiC)
  - Objective: a methodology for transactions within the health systems in relation to health outcome
  - Goal: to link statistics on health care, morbidity and causes of death for monitoring the efficiency of health systems
  - Call for tender was launched 8 May 2013 (2013/S 089-150438)  
[http://epp.eurostat.ec.europa.eu/portal/page/portal/calls\\_for\\_tenders/calls](http://epp.eurostat.ec.europa.eu/portal/page/portal/calls_for_tenders/calls)
- Electronic Death Certification (eDC)
  - Objective: to improve quality and timeliness of the COD data collection
  - Call for proposals will be launched this week



# SILC - Health

## ■ SILC-GALI and HLY

- Comparability assessment finished and tables / metadata updated
- Additional letter to 10 DSS members

## ■ Revision of Guidelines – health variables:

- Compatibility EHIS wave 2
- Also revision for unmet needs variables => WG SILC (June)

## ■ JA EHLEIS collaboration

- Annual Conference
- Work Package: validation GALI and future SMPH

# EHIS wave 1

## Access to micro data:

### ■ Anonymisation rules agreed

- Contracted study on disclosure risks finalised
- Written approval to be expected
  - by Expert Group Statistical Disclosure Group
  - end of May, no remarks till now
- Revised regulation on access to confidential data for scientific purposes:
  - approved by the ESSC - February 2013
  - expected to enter into force in July 2013
- Open for requests from 1 July 2013

## EHIS wave 2

- Commission Regulation 141/2013 adopted 19 February 2013  
<http://eur-lex.europa.eu/LexUriServ/LexUriServ.do?uri=OJ:L:2013:047:0020:0048:EN:PDF>
- Commission decision on derogations adopted 19 February 2013  
<http://eur-lex.europa.eu/LexUriServ/LexUriServ.do?uri=OJ:L:2013:048:0021:0022:EN:PDF>
- Methodological manual => June
- Quality report => June
- Validation rules and data file specifications

# 2011 Labour Force Survey (LFS) ad-hoc module on employment of disabled people

- situation on the labour market of disabled people
- only barriers in the area of employment
  - disabled persons (in employment) are those who declare that a health condition or disease or a difficulty in basic activities causes their limitation in work.
- Analysis (contractor) on-going
- Autumn 2013
  - Dissemination of first results (tables) on Eurostat website
  - Publication of articles for Statistics Explained
- First semester 2014
  - Other Statistics Explained articles

# European Health and Social Integration Survey - EHSIS 2012

- statistics on disability as defined by the UN Convention and ICF
- Implementation in 2012 in all Member States, Norway and Iceland as an independent survey via a call for tender (30 lots)
- Total EU (plus Norway and Iceland) sample size: 230.000 persons (8.000 persons on average per MS)
- Fieldwork: September 2012 – February 2013
- Results:
  - Micro-data should be sent to Eurostat by Autumn 2013
  - Tables on Eurostat website by first semester of 2014

## Other

- Dedicated section "Quality of life"

[http://epp.eurostat.ec.europa.eu/portal/page/portal/quality\\_life/introduction](http://epp.eurostat.ec.europa.eu/portal/page/portal/quality_life/introduction)

- EU-SILC 2013 module on well-being

<http://eur-lex.europa.eu/LexUriServ/LexUriServ.do?uri=OJ:L:2012:022:0009:0015:EN:PDF>