

# Alcohol and teenage pregnancies

Dr Penny A. Cook

Centre for Public Health

Liverpool John Moores University

*Sexual Health Forum  
Brussels, 13 January 2010*



GLOBAL CAMPAIGN FOR VIOLENCE PREVENTION  
CAMPAGNE MONDIALE POUR LA PREVENTION DE LA VIOLENCE

VIOLENCE PREVENTION ALLIANCE / ALLIANCE POUR LA PREVENTION DE LA VIOLENCE



**IREFREA**



# Awash with Alcohol



Centre for  
Public Health

[Home](#) [Arcade](#) [Members](#) [Bloggers](#) [Events & Freebies](#) [WKD Shop](#) [Wind-Up](#) [Downloads](#) [Mugshots](#) [WKDology](#) [Contact](#)

## PRIVATE EYES

**WKD**

**We've EXPOSED your WKD side...**

Our Private Eye girlies have been exposing your WKD side and you've been caught out quite literally with your pants down! There's no hiding from it cause we've got the video evidence to prove it!

**CHECK OUT OUR WKD FILES** >>

Belfast Croydon >>



# Children and Alcohol



- Of 15 year olds
  - 30% think okay to be drunk once a week
- Of 9-11 year olds
  - 3 in 5 think you drink to forget your problems
- Trends
  - Long term trends are up
  - Recent 11-15 year olds drinking fallen
    - (last week - 26% 2001 – 21% 2006)
  - Those drinking weekly average
    - (9.8 units 2001 – 11.4 units 2006)
  - Increase (36%) in 10 years - number under 16 admitted to hospital with diagnoses specific to alcohol consumption



# Alcohol and sex in teens

## *Problematic Heterosocial Situations Reported by Teens*

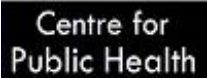


- Meeting someone for the first time
  - Approaching an attractive person of the other sex
- Asking for a date
  - getting rejected
  - turning down a date
  - where to go
  - keeping conversation going

## *Why turn to alcohol?*



- Cognitive functioning
  - Reduces inhibitions and risk perception
  - Increases confidence and perceptions of attractiveness
  - **Adults use for stress relief**
- All achievable without alcohol
  - Educational School/Parents?





# CONTRIBUTIONS OF ALCOHOL USE TO TEENAGE PREGNANCY

An initial examination of geographical and evidence based associations

Mark Bellis Michela Morleo Karen Toque Don Dodman Penny Phillips-Howard Clare Perkins Lisa Jones

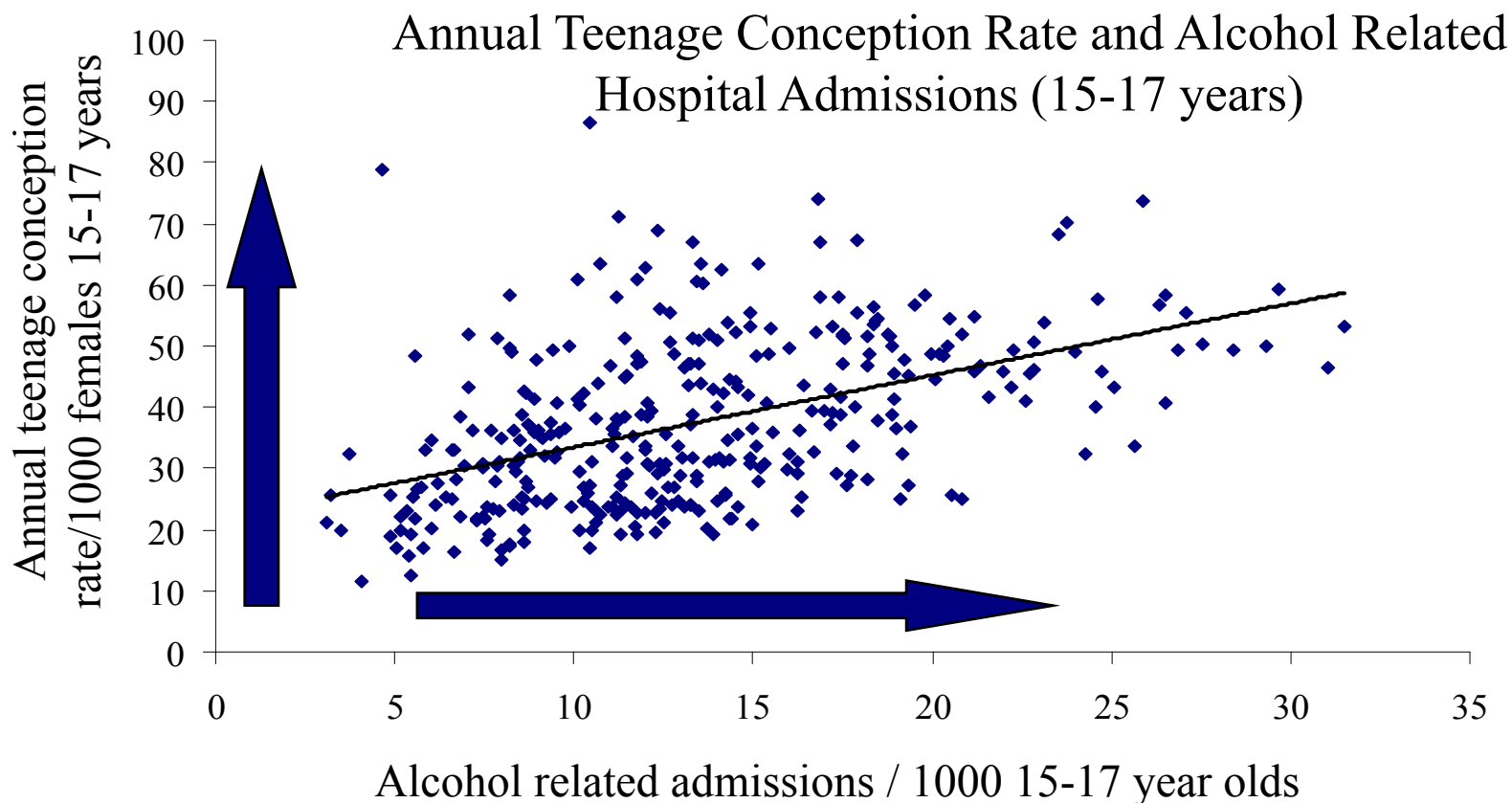
North West Public Health Observatory  
Centre for Public Health  
Liverpool John Moores University

# Alcohol & Teenage Pregnancy: Evidence Review



1	Alcohol use in young people contributes to regretted sex and increasing consumption linked to greater probability of <b>regretted sex</b>
2	Any drinking by teenagers associated with being <b>sexually active</b> , especially bingeing
3	Alcohol use at first sex linked to <b>lower condom use at first sex</b>
4	Early alcohol initiation, drinking more and at higher frequencies associated with having <b>higher numbers of sexual partners</b>
5	General link between <b>non-condom use</b> and alcohol mixed – stronger in binge or problem drinkers
6	Some evidence links alcohol misuse and <b>sex without any contraception</b>
7	Especially binge drinking and drinking greater quantities, associated with an increased risk of <b>becoming pregnant</b> and <b>getting someone pregnant</b>
8	Early regular alcohol use associated with <b>early sex</b>
9	Good evidence – link drinking in young people, especially bingeing and increased risk of <b>forced sex</b>

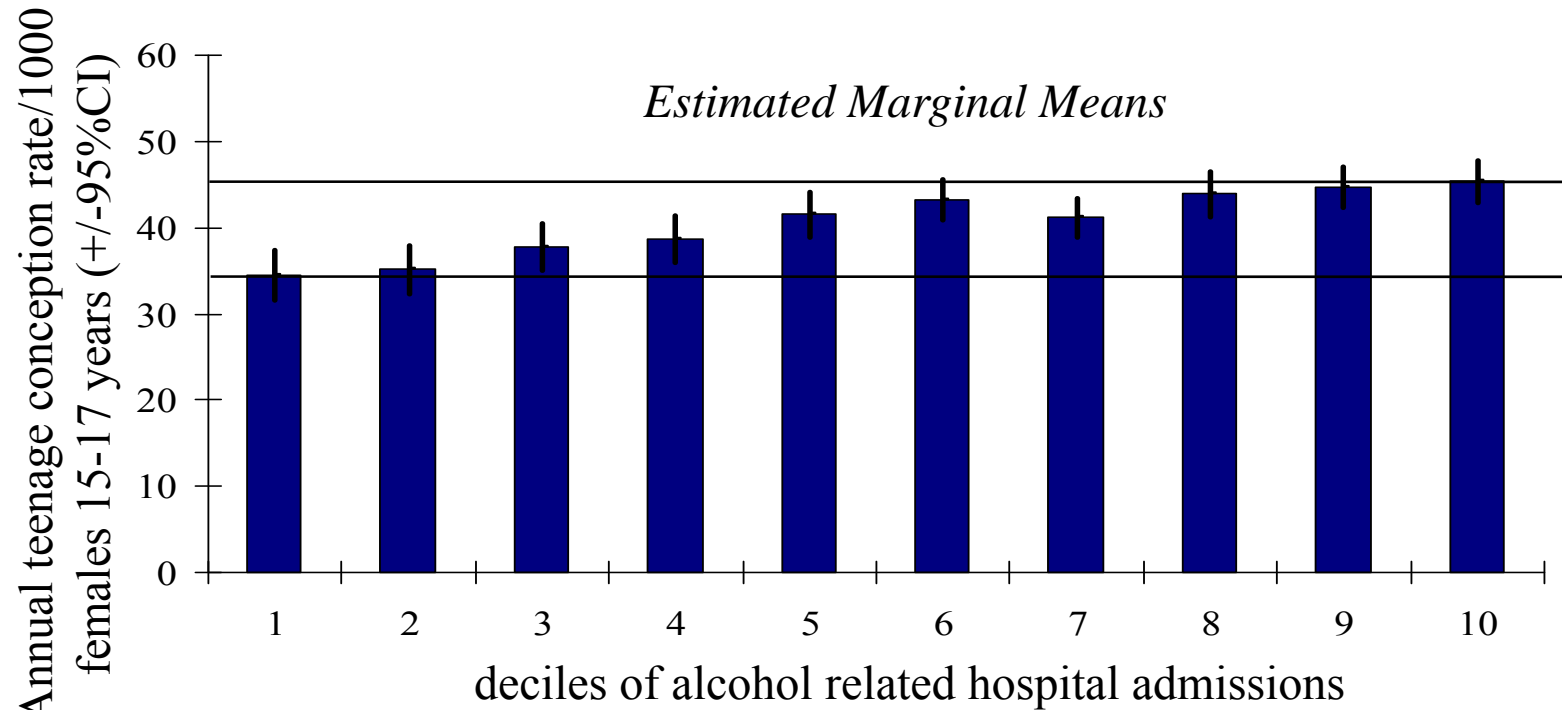
# Alcohol Harm and Teenage Pregnancy



*Data based on conception rate 2004-06. Alcohol related hospital admissions are based on specific causes (100% attributable) for those aged 15 and attributable (<100% related) and specific causes for 16 and 17 years olds. Analysis undertaken at Local Authority level. Alcohol data relate to years 2004/05-2006/07.  $R^2=0.199$ .*

# Annual Teenage Conception Rate

Independent Relationship with Alcohol Related Hospital Admissions (15-17 years)



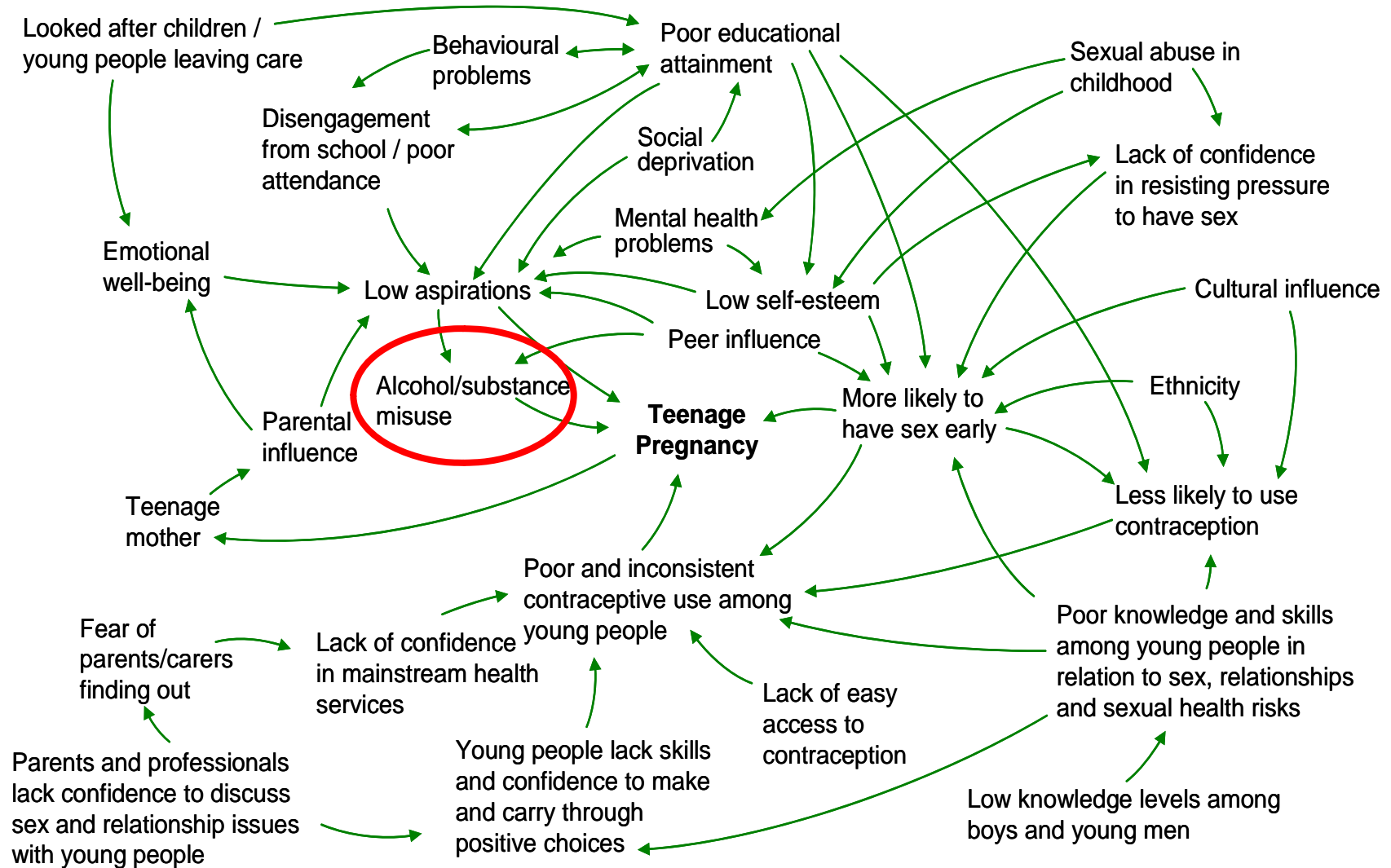
*Data based on conception rate 2004-06. Alcohol related hospital admissions are based on specific causes (100% attributable) for those aged 15 and attributable (<100% related) and specific causes for 16 and 17 years olds. Alcohol data relate to years 2004/05-2006/07. Analysis undertaken at Local Authority level using general linear modelling to calculate estimated marginal means after child deprivation has been taken into account.*

*Bellis et al 2009*





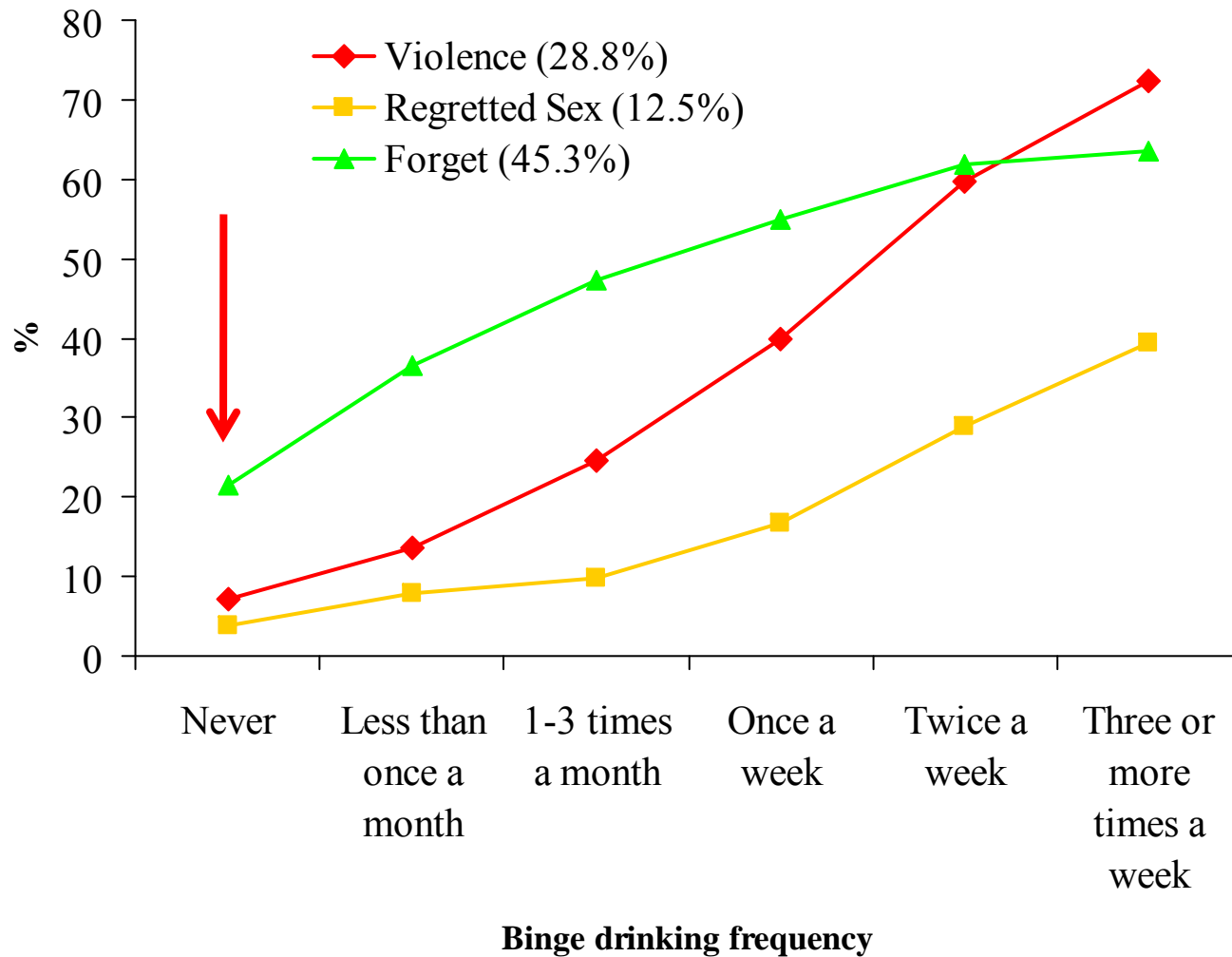
# Factors associated with teen conceptions



# Drinking Behaviours and Harms in 15 & 16 year old Drinkers

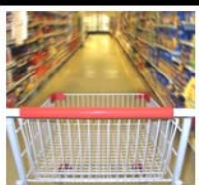


Centre for  
Public Health

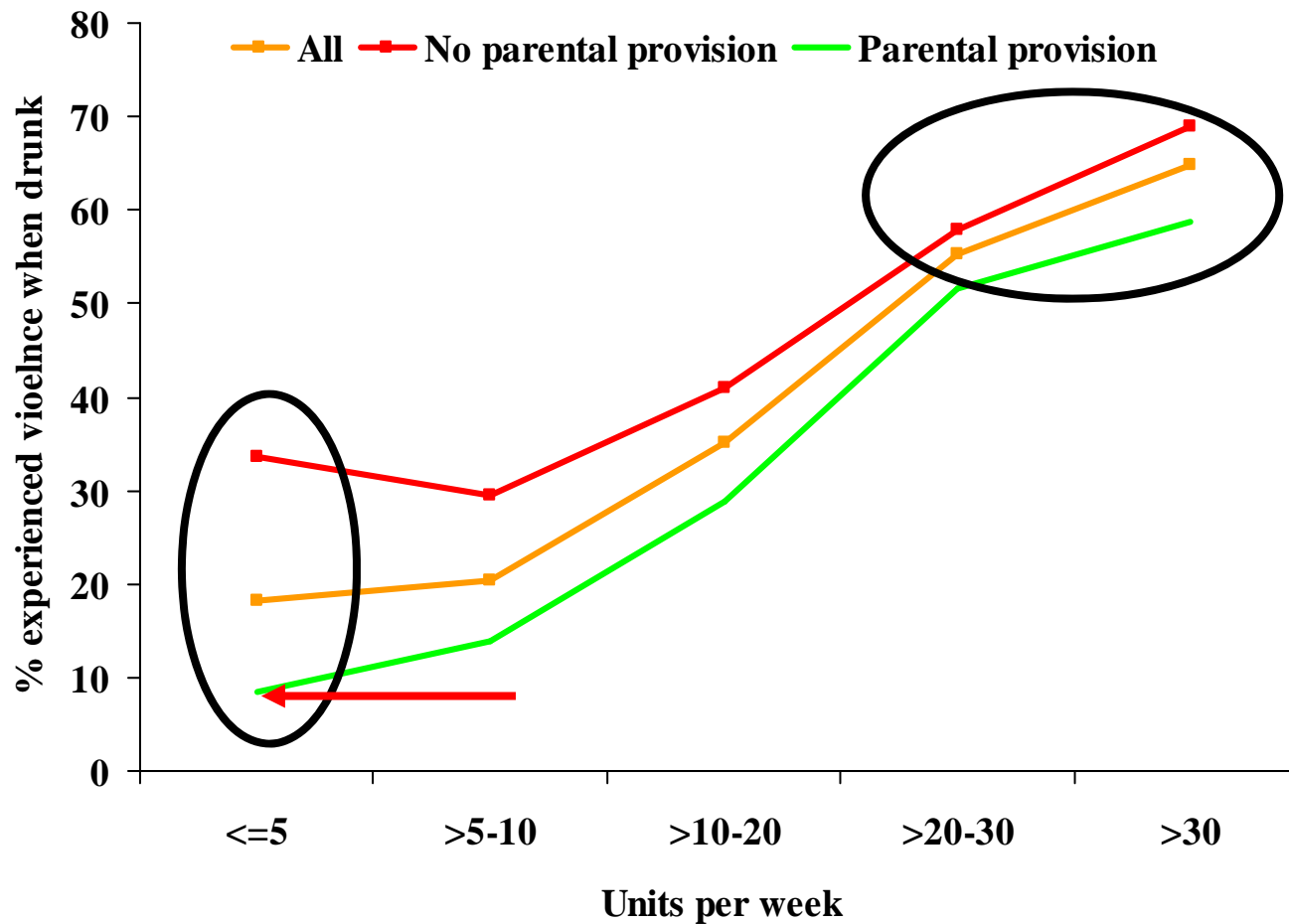


*Bellis et al, 2009; n= 8263 (Five or more drinks in one session)*

# Drinking Behaviours and Harms in 15 & 16 year old Drinkers



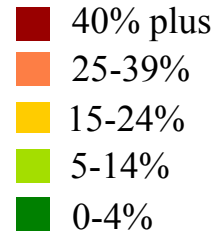
Centre for  
Public Health



Bellis et al, 2009; n= 8263

# Drunkennness and Unprotected Sex

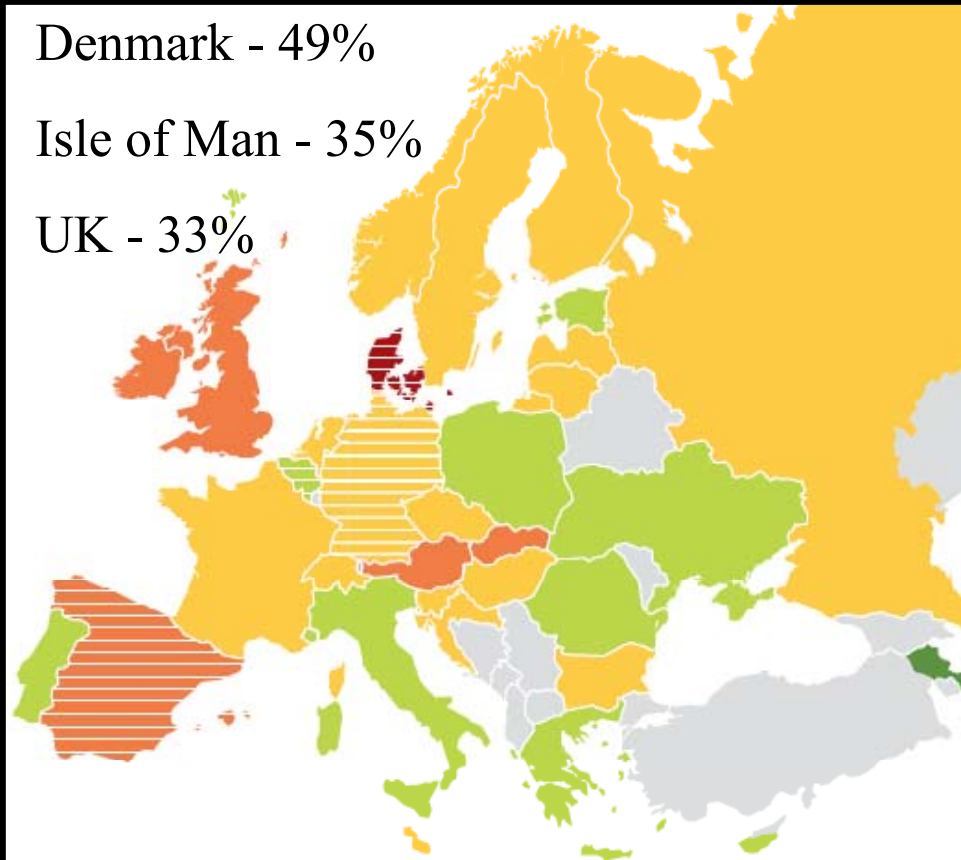
% of 15-16 year old students  
having been drunk in the last  
30 days, 2007



Denmark - 49%

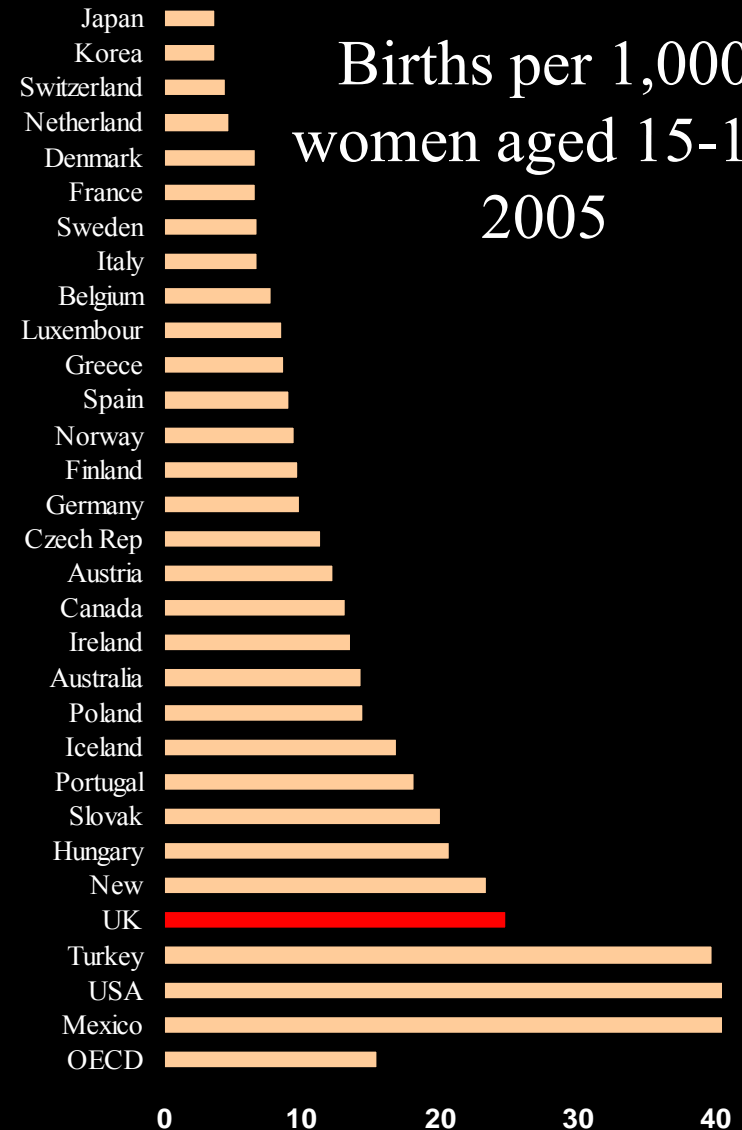
Isle of Man - 35%

UK - 33%



*Hibell et al, 2008*

Births per 1,000  
women aged 15-19,  
2005



OECD 2009



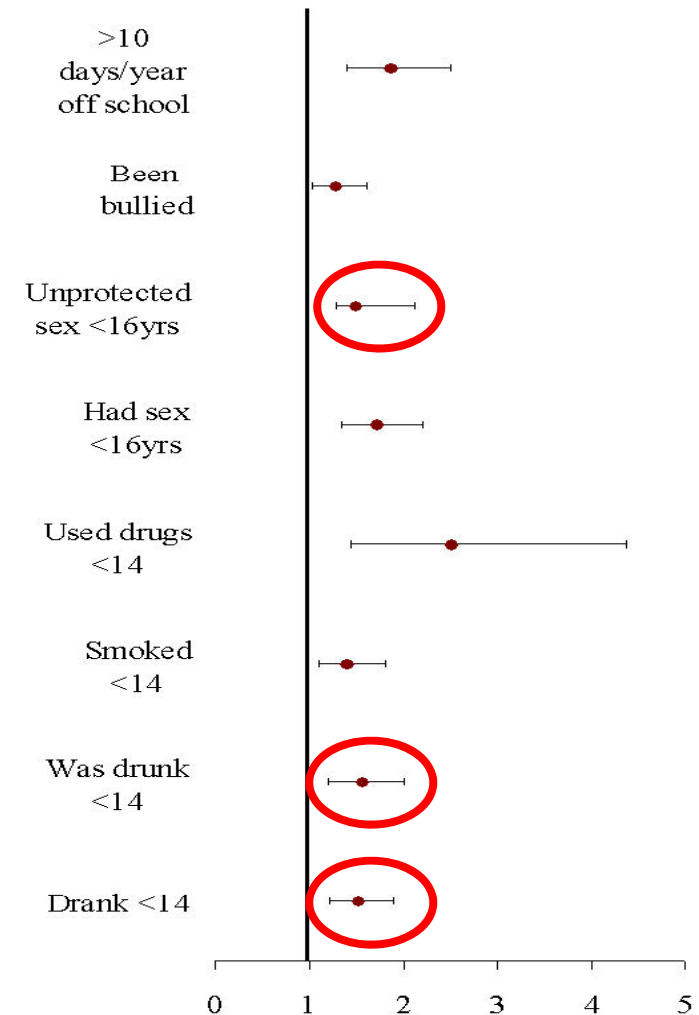
# Sexual and Alcohol Prevention Interventions

- Effective programmes examining both alcohol and sexual behaviour are:
  - Social development/skills-based
  - Incorporate a family or intensive community element
  - Are aimed at primary school aged children or those under age 14 years

# Preparation for Puberty

- Down two years since 1940 to 12 years
- Early puberty linked to:
  - Being overweight/body fat
  - Single-parent family
- Year 6 (Age 10-11 years)
  - 14.3% Overweight
  - 18.3% Obese
- 2089 individuals over 16 years
  - Girls Menarche ( $\leq 12$  vs  $\geq 13$  years);
  - Boys Puberty Proxies ( $\leq 11$  vs  $\geq 12$  years)
  - Earlier puberty related to deprivation (both sexes)

Contribution of earlier puberty to post puberty behaviours (AORs)



Bellis et al, 2007, Downing & Bellis, 2009





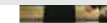
Who comes up with this sort of nonsense. The person responsible for this idea should be jailed at the very least. To think that, we pay these disgusting idiots to come up with such ideas only says one thing about us. yes SIR, We deserve these child molesting cheats in the Parliament.

- Entertainment
- TV Guide
- Money
- Motoring
- Travel
- Careers
- Fun / Competitions
- Cartoon
- Blogs
- Forgotten Verse
- Have a Story?
- Contact Us
- Polls
- Retirement
- Property
- Our Paper



Ed Balls' plans have upset parents

Schools Secretary Ed Balls also revealed that families will no longer be able to withdraw children from sex education lessons once they turn 15.



continue making offensive shows in a bid ...

• Read More Have Your Say(0)



**Helmand dead 'were men of rage'**

ites have been paid to the five British ers murdered by an Afghan polic...

ad More Have Your Say(0)

**ssacre won't be the last 'ns commander'**

ISH troops in Afghanistan were ned by their commander yesterday the ...

ad More Have Your Say(0)

## IS THIS NOT CHILD ABUSE?

I think it is. If I allowed my child or forced my child to watch explicit sex acts I would be locked up .

But Mr Wells said sex education itself was to blame.

He said: "We've had 30 years of sex education in secondary schools and it has never been more easy for teenagers to get hold of contraception without their parents knowing, yet we still have the highest teenage conception rates in Western Europe and sexually transmitted infection rates have continued to rise."

Religious schools will be forced to teach all aspects of the new-style curriculum. Children at some religious schools could be taught that their faith frowns on contraception at the same time

- Dating
- Wine Shop
- Bingo
- Mortgages



- Dating
- Vouchers
- Express Mortgages
- Express Loans
- Bingo
- Lose Weight
- Franchising
- Mobile Deals

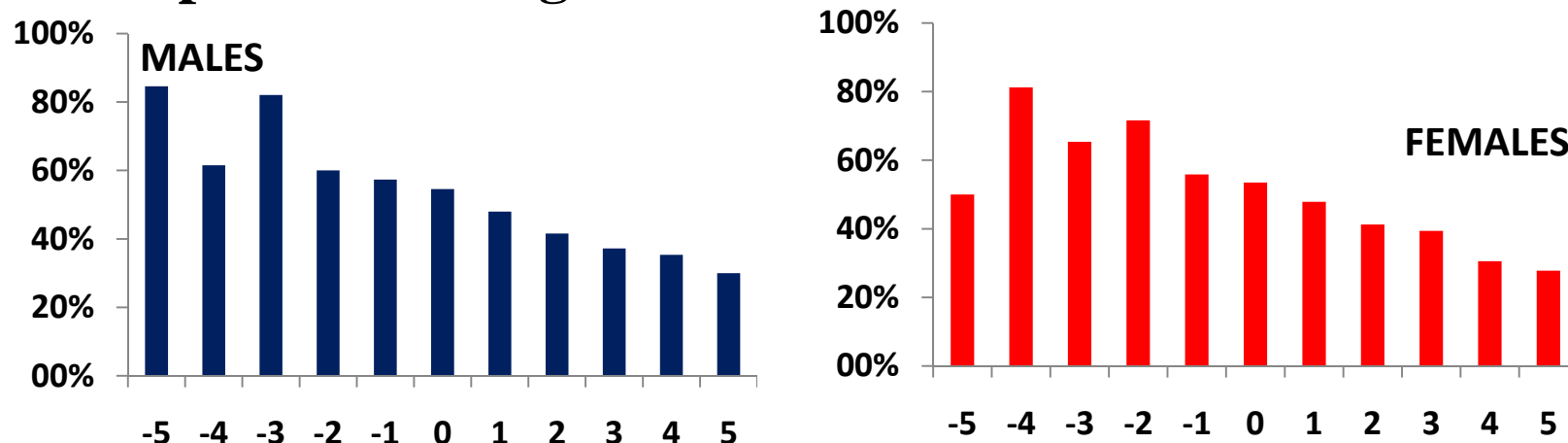




# School life and alcohol use in 11-14 year olds

- Ever drunk alcohol
  - Boys: 39% at age 11 to 63% at age 14
  - Girls: 25% at age 11 to 67% at age 14

## Proportion having drunk alcohol



**Aggregated school-life ethos scores from 5 indicators\***

\*School is a nice place to be; in your school, students take part in making the rules; teachers expect too much of you; your teacher treats you fairly; the students are treated too strictly/severely in your school

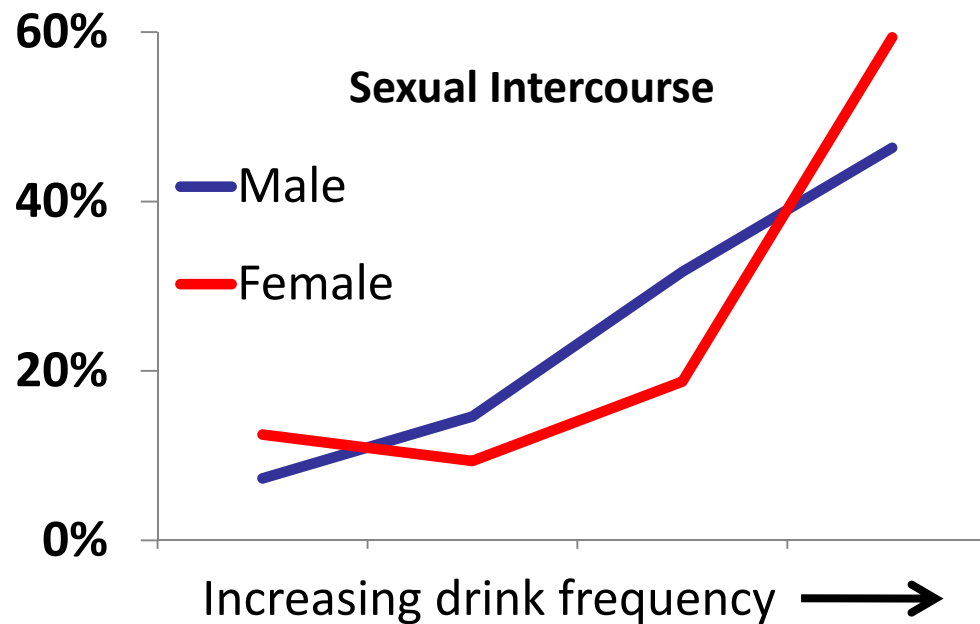
*N=3641, NW SRE study, Phillips-Howard et al, in prep*



# Having had a sexual relationship

Having had any sexual relationship (odds)\*:

- Occasionally / regularly drink (once a month) ~4 x higher
- Frequently drink (three times/week or more) – 8.5 x higher
- Do not take part in making rules – 2.8 x higher
- Cannot assert views with boy/girlfriend - 5 x higher



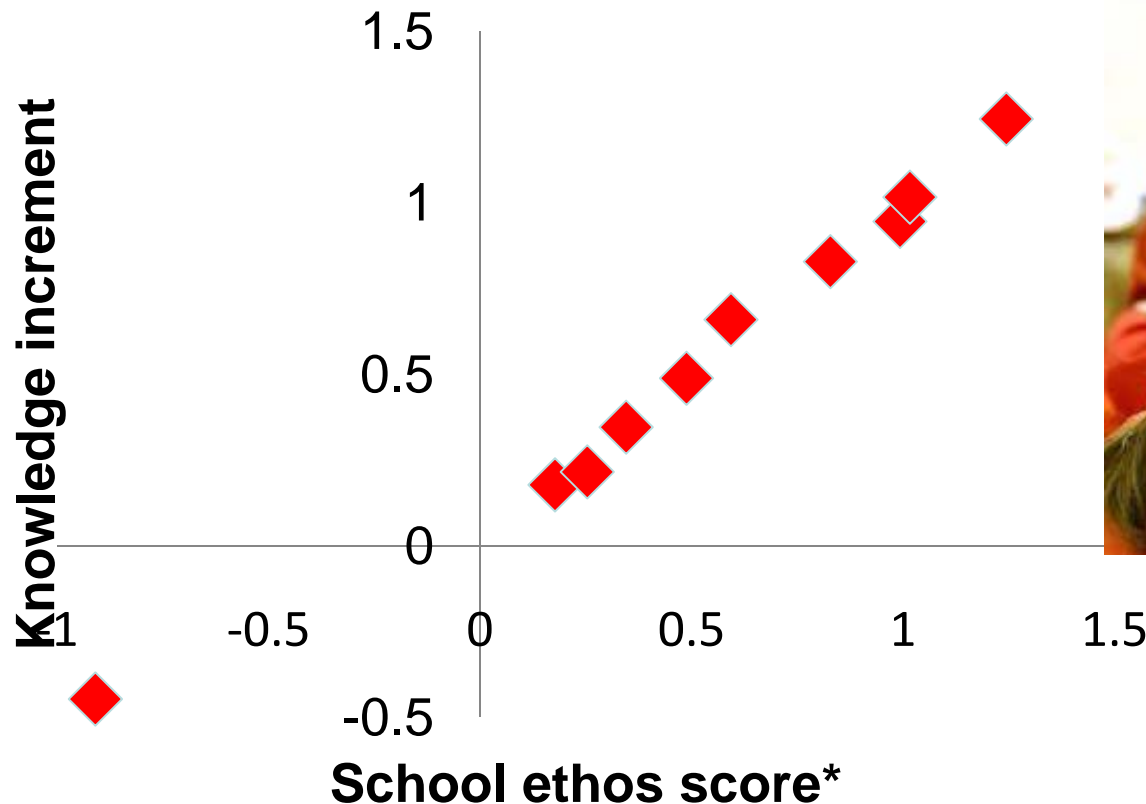
\*kissing, deep kissing, petting, oral sex, intercourse; n=513; Similar results for serious sexual activity (oral sex, intercourse; n=525)

*NW SRE study, Phillips-Howard et al, in prep*



# Knowledge increase following SRE

- Increase in knowledge post intervention is correlated with student perception of school ethos (school-level analysis)



\*School is a nice place to be; in your school, students take part in making the rules; teachers expect too much of you; your teacher treats you fairly; the students are treated too strictly/severely in your school

*NW SRE study, Cook et al, in prep*





Centre for  
Public Health

# Protective Effect of Alternatives

- Of drinkers, those without involvement in sports, hobbies or clubs
  - After corrections for deprivation and demographics
  - 59% more likely to Binge weekly
  - 50% more likely to drink 2+ times a week
  - 12% more likely to drink in public places



*Bellis et al, 2008*



# Night Time Economics



- Alcohol now 54% more affordable than in 1980
- Pocket money averaging £8 (9 EUR) per week.



Football  
£20-£45 (22-50EUR)

Badminton, Liverpool  
£7 (8E) non members

Cider, Aldi 5.3%,  
2litres £1.49 (<2E)



- What do parents know about children's expenditure

- *“I am dead skinny when I am drunk, I would wear the skimpiest little bikini and I would look fab in it.”* Female, 21-24 years

- Concerns around body image linked to (USA Study):
  - Binge drinking
  - Sex under the influence of alcohol and drugs
  - Inconsistent condom use
  - Multiple sexual partners



**If you drink like a man  
you might end up looking like one.**



If you won't  
give up smoking  
for your lungs,  
heart or throat,

maybe you'll  
do it for  
your penis.

Did you know that there's  
a valve in your penis that  
traps the blood inside so  
you can get an erection?  
That every time you smoke,  
this valve is damaged?  
That if you don't quit now,  
it might stop working  
altogether? You do now.

Text HARD to 84118  
for a free information pack.  
Texts will be charged  
at your standard rate.  
Call 0800 169 0 169  
[www.stayinghard.info](http://www.stayinghard.info)

**NHS**

If you have any concerns about  
impotence please contact your GP

# Conclusions

- Alcohol and Sex closely linked from early teens onwards
  - UK Youth culture is now drunken dating
- Importance of good quality SRE at the right level, right time
  - Opposition to compulsory SRE
  - People mature earlier - have we moved with them
- Break the sexy-alcohol link
  - Opportunities to use sex as anti-drunk messages
  - Danger safe sex messages may even be iatrogenic
- Research
  - Young people, sex, drugs and alcohol – unfunded & avoided
- Inter-professional understanding and roles
  - CPD and curriculum issue; Diagnosis and drinking
- Our offer to children/teens?



**This paper was produced for a meeting organized by Health & Consumers DG and represents the views of its author on the subject. These views have not been adopted or in any way approved by the Commission and should not be relied upon as a statement of the Commission's or Health & Consumers DG's views. The European Commission does not guarantee the accuracy of the data included in this paper, nor does it accept responsibility for any use made thereof.**