

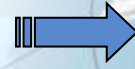


*Northern Dimension*  
Partnership in Public Health  
and Social Well-being

# **Alcohol issues in the Northern Dimension Partnership in Public Health and Social well- being**

Mr. Bernt Bull, ASA EG, Chairman  
International Technical Advisor

# Northern Dimension



# Geographical Area

The ND area ranges from the European Arctic and Sub-Arctic to the southern shores of the Baltic Sea encompassing the countries in its vicinity, as well as the North West Russia in the East to Iceland and Greenland in the West

# Structure



# Partner Countries



Estonia



Finland



Germany



Sweden



Iceland



Latvia



Lithuania



Norway



Poland



Russia

# Structure



# Partner Organisations



BEAC



CBSS



EC



ILO



IOM



NCM



UNAIDS



WHO



BSSC

# The responsibilities of the ASA EG

- Continuing review of the nature and extent of the problems caused by alcohol in Partner Countries, prevalence and impact, and the opportunities and possible constraints in establishing new policies and programmes;
- Developing, facilitating and assisting in implementing policies, programmes and activities to promote health, safety and well-being through reduced consumption of alcohol, tobacco and illicit drugs



## Overview of strategies in ND Area

- **Estonia** – development of the Green book of alcohol policy began in October 2011 and finalised at the end of 2012
- **Finland** – Alcohol Programme 2008 –2011
- **Latvia** – „Public Health Strategy for 2011–2017“, new action plan “Reduction of alcohol consumption and restriction of alcohol addiction for 2012–2014”
- **Lithuania** – Alcohol and Tobacco Control 2012–2014
- **Norway** – National Action Plan on Alcohol and Drugs
- **Poland** – National Programme for the Prevention and Solving of Alcohol-Related Problems



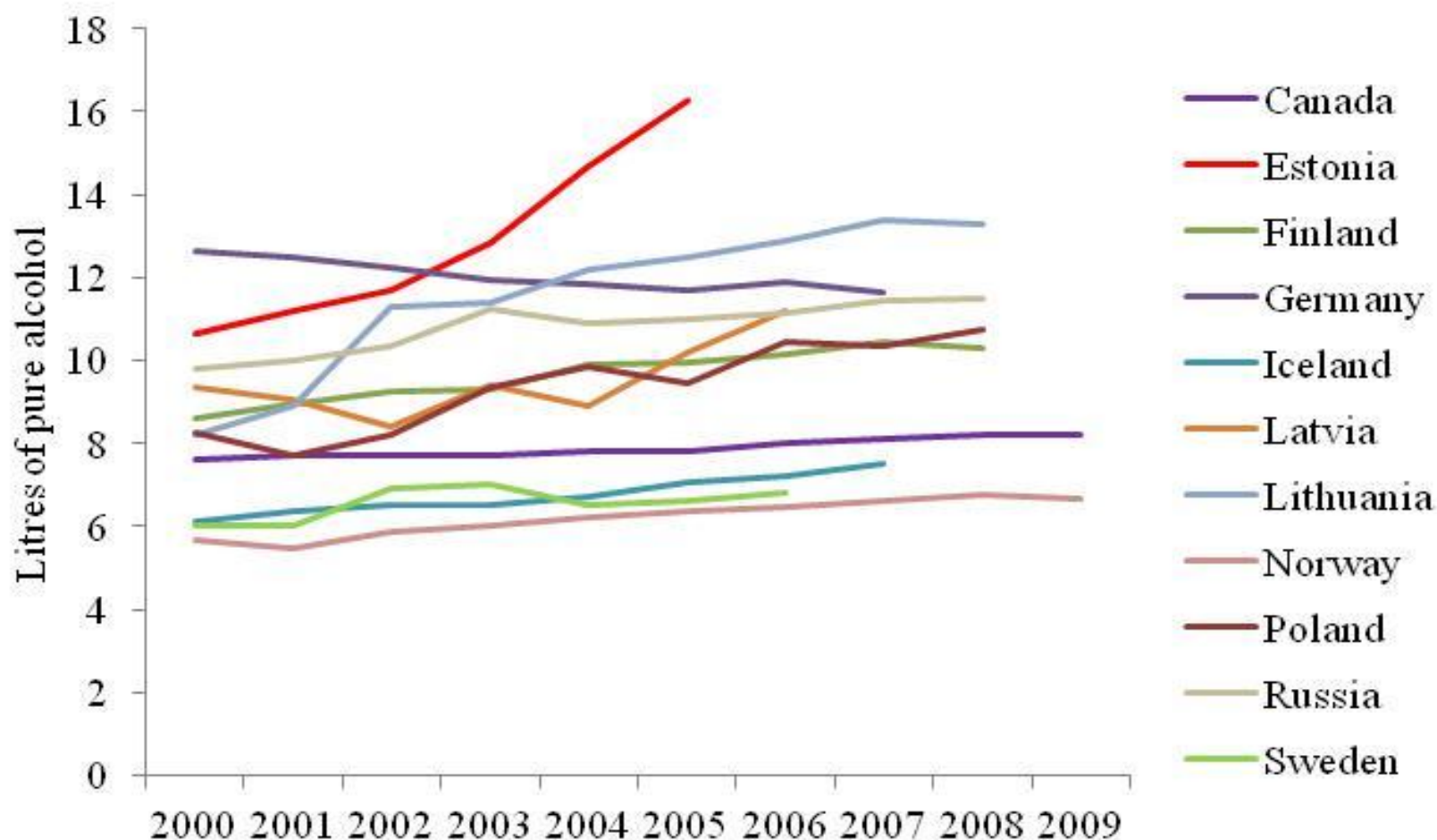
## Overview of strategies

- **Russia** – development of state policy to reduce alcohol abuse and alcohol prevention among population of Russian Federation for the period up to 2020 was adopted by the Russian Government on 30.12.2009
- **Sweden** – alcohol policy is a part of a national strategy for alcohol, illicit drugs, doping and tobacco 2011–2015





## Alcohol consumption in ND area



Recorded adult (15+) per capita consumption in ND area, WHO's HFA database





## Measures to reduce alcohol availability

Country	Minimum age	Opening hours of off-premise alcohol sale
Estonia	18	10:00–22:00
Finland	18 (<4.7%) 20 (>4.7%)	09:00–20:00 (Mon–Fri) (>4.7%) 09:00–18:00 (Sat) (>4.7%) 09:00–21:00 (Mon–Sun) (<4.7%)
Latvia	18	08:00–22:00
Lithuania	18	08:00–22:00
Norway	18 (<22%) 20 (>22%)	08:30–18:00 (Mon–Fri) (>4.7%) 08:30–15:00 (Sat) (>4.7%) 08:00–18:00 (Mon–Fri) (<4.7%) 08:00–15:00 (Sat) (<4.7%)
Poland	18	0:00–24:00
Russia	18	08:00–00:00 (>15%)
Sweden	18 (<3.5%) 20 (>3.5%)	10:00–21:00 (Mon–Fri) (>3.5%) 10:00–15:00 (Sat) (>3.5%)

**Question 6: Please assess the trend over the past five years for the price of alcoholic beverages compared to the percent change in the consumer price index (CPI)**

Recent alcohol pricing policies in the NDP countries appear very different from each other

- Increase in alcohol prices: Finland and Russia
- Prices remain stable: Norway (since 2010)
- Decrease in alcohol prices: Sweden and Poland
- Price changes process difficult to assess: Estonia and Latvia.

**Question 11: Please provide information on the extent to which different public environments are alcohol-free in your country.**

Places of Restrictions	FINLAND	LATVIA	LITHUANIA	SWEEDEN	RUSSIA	POLAND	ESTONIA	NORWAY
Health care establishments	T B	T B	T B	S R	T B	S R	T B	P R
Educational buildings	T B	T B	T B	S R	T B	T B	T B	P R
Government offices	T B	T B	P R	S R	T B	T B	S R	P R
Public transport	T B	S R	T B	S R	T B	P R	T B	T B
Parks, streets etc	P R	S R	P R	P R	T B	T B	T B	T B
Sporting events	P R	S R	P R	S R	T B	P R	S R	S R
Leisure events (concerts etc.)	P R	S R	P R	S R	T B	S R	S R	S R
Workplaces	T B	T B	T B	S R	T B	T B	P R	P R
Religious places of worship	T B	S R	No	S R	T B	S R	No	P R

**T B** – Total ban

**S R** - Voluntary agreement / self-regulation

**P R** - Partial statutory restriction

No - No restriction

# 2010 statistics

Officially registered patients in the Russian Federation in 2010

Dependency on  
volatile inhalants

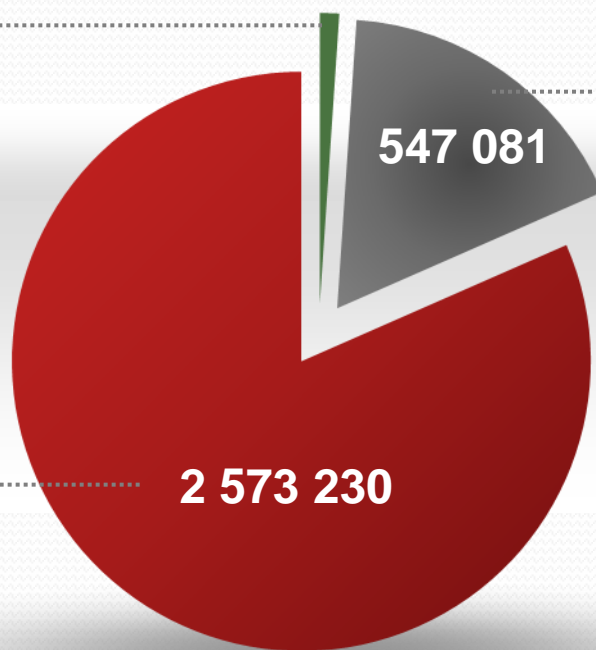
33 607

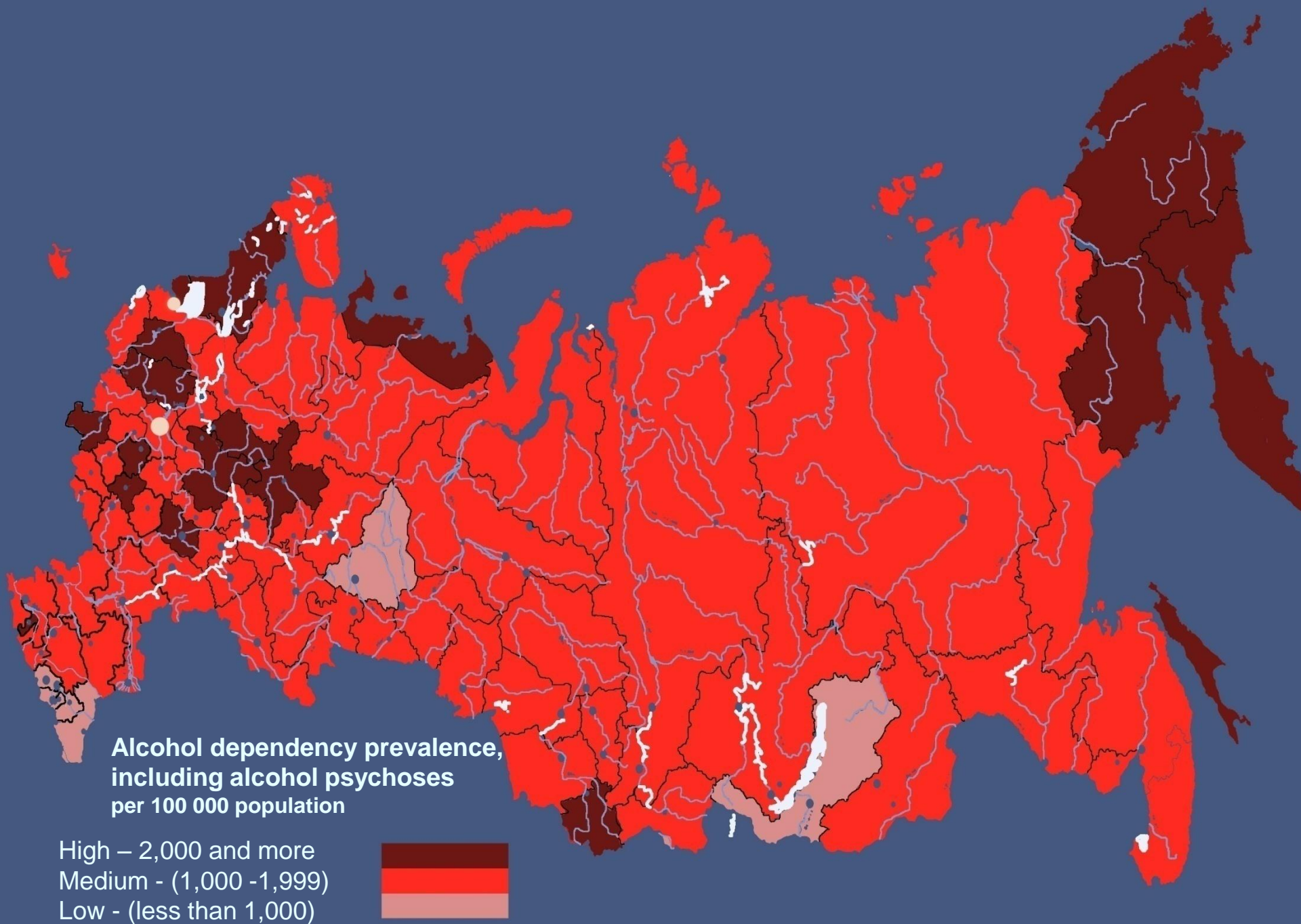
Dependency on  
illicit drugs

547 081

Alcohol  
dependency

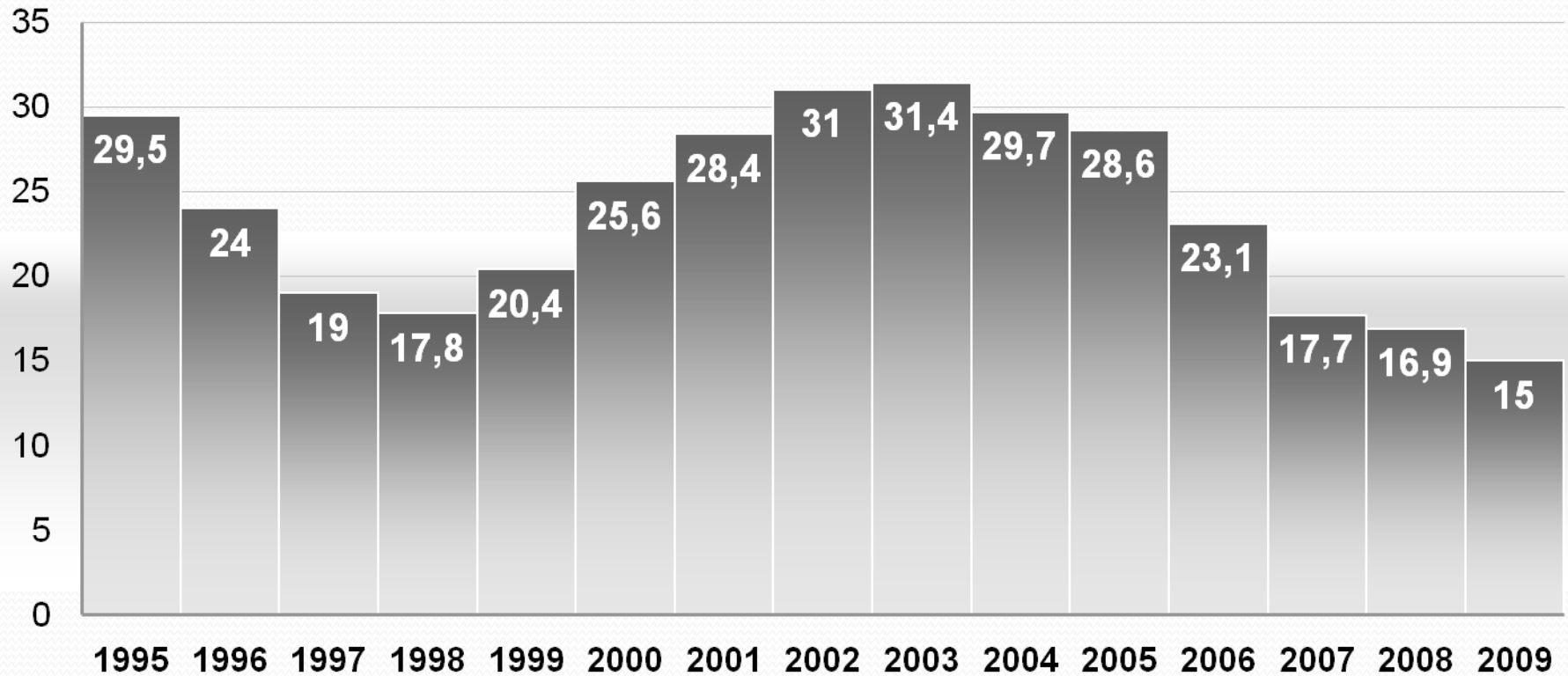
2 573 230





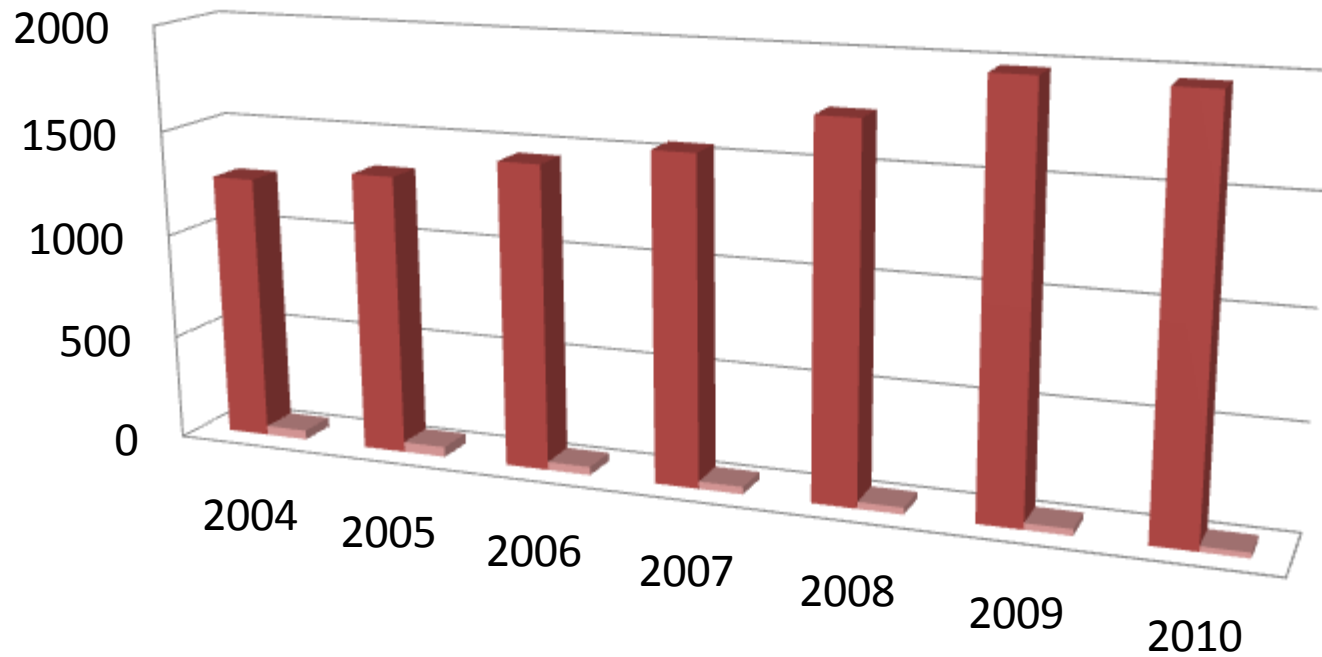
# Alcohol-Related Mortality in Russia

(per 100,000 population)



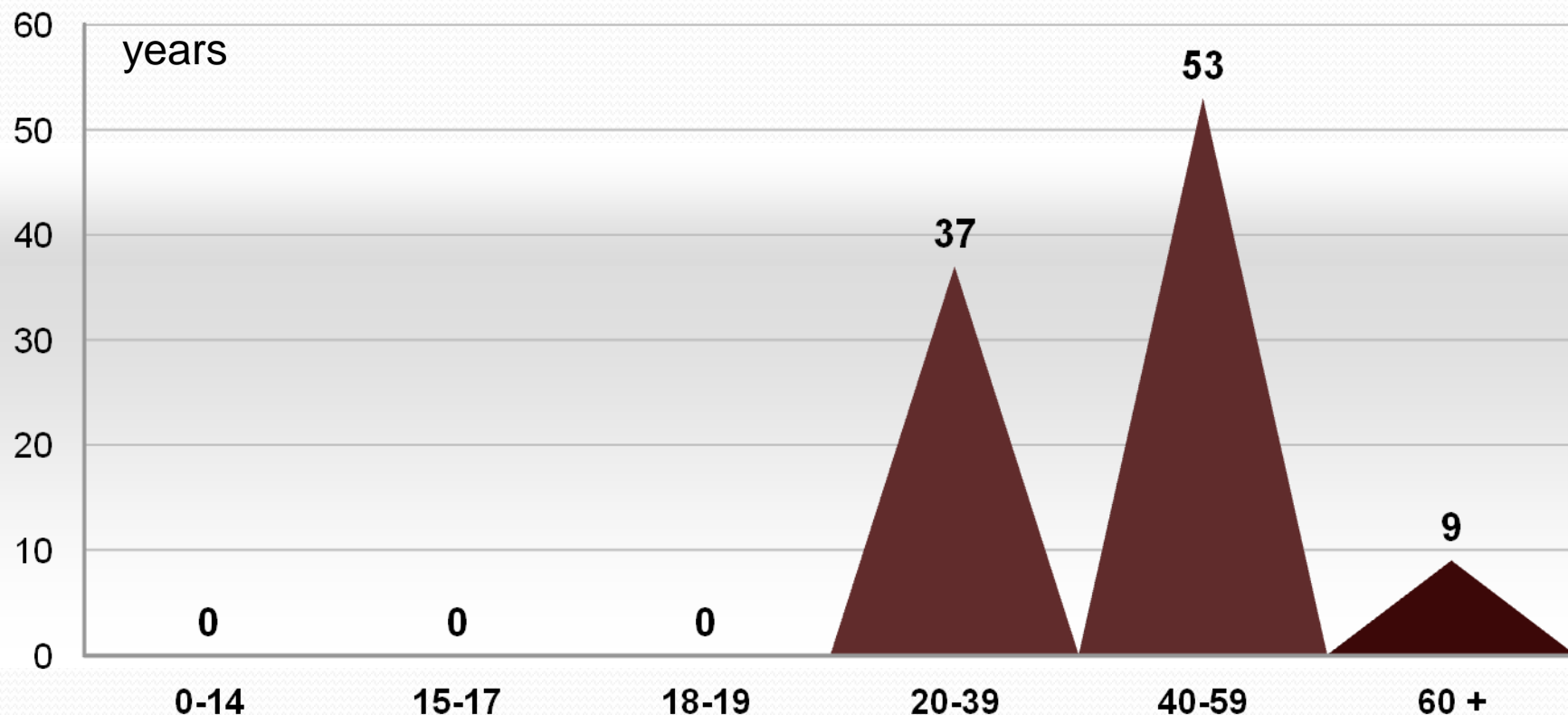
# Alcohol Incidence among Teenagers

(per 100 000 population)



	2004	2005	2006	2007	2008	2009	2010
■ Harmful alcohol use	1266,5	1334,1	1446,3	1549,3	1751,6	1974,9	1961,8
■ Alcohol dependency (incl. AP)	43,8	47,9	39,1	35,4	32,5	31,4	25,9

# Distribution of Patients with Alcohol Dependency by Age Group (%) in 2010 (according to official statistics data) in Russian Federation





## ASA EG activities

- **Alcohol and Drug Prevention among Youth (ADPY) in the Baltic Sea region communities; situation analysis for evidence based practices**
- The project includes the school-based surveys within the participating communities in order to assess the needs. Local mobilisation and policy development that shall result in tailored community reports with suggestions on future policies
- Project proposal on alcohol and tobacco related harm and the policy response in the Northern Dimension region is developed
- Two thematic reports on Alcohol policies in ND region (developed by Estonia and Russia)

# Project proposal developed on Standardized Measurement of Alcohol Related Troubles (SMART) survey

- To provide policy makers with knowledge and information which lead to a more informed and evidence based policy making to reduce alcohol's health and economic burden to ND countries
- Support in recruitment of countries to JA WP4
- Enabling Russia participation in survey exercise
- Separate report for ND Region
  - comparisons within ND Region
  - comparisons of ND Region with other regions

# New project idea from Russia

- **Detecting Patients with Alcohol Problems in the General Medical Network**
- **Develop methodology of active detection of pre-clinical alcohol dependency conditions (prodromal phase) among somatic profile patients who seek treatment at medical facilities, in order to develop recommendations to improve provision of specialized care**

# BSPC Resolution, August, 2011

- take concerted action to complement national responses to public health problems, taking into account the gender dimension, caused by avoidable unhealthy lifestyles in general and the harmful use of alcohol and substance abuse in particular, leading into non-communicable diseases, and threatening social cohesion and socio-economic development

**Thank you for your attention**

*Northern Dimension*

Partnership in Public Health

and Social Well-being

