



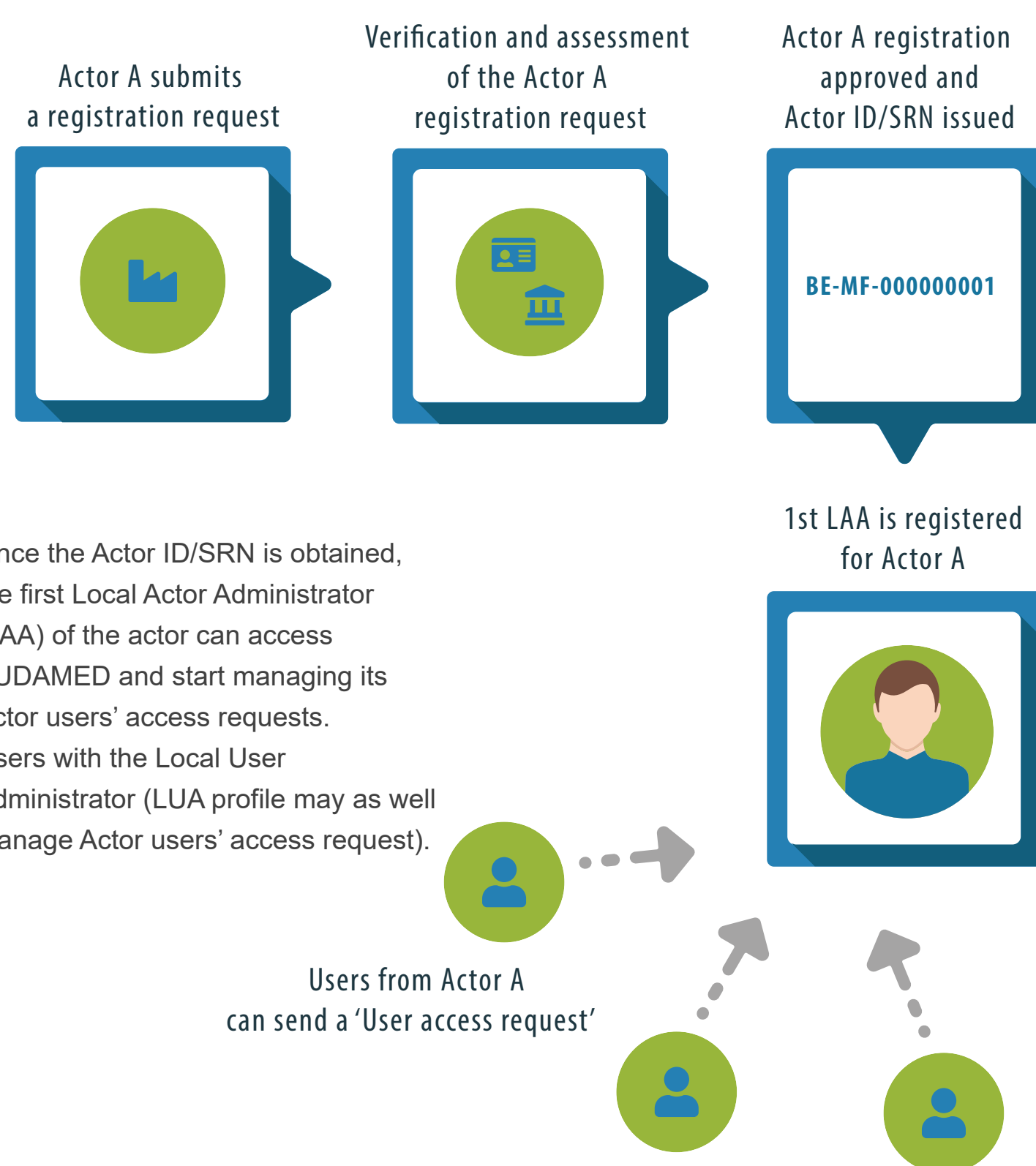
European Commission

EUDAMED

European database on medical devices

USER ACCESS REQUESTS

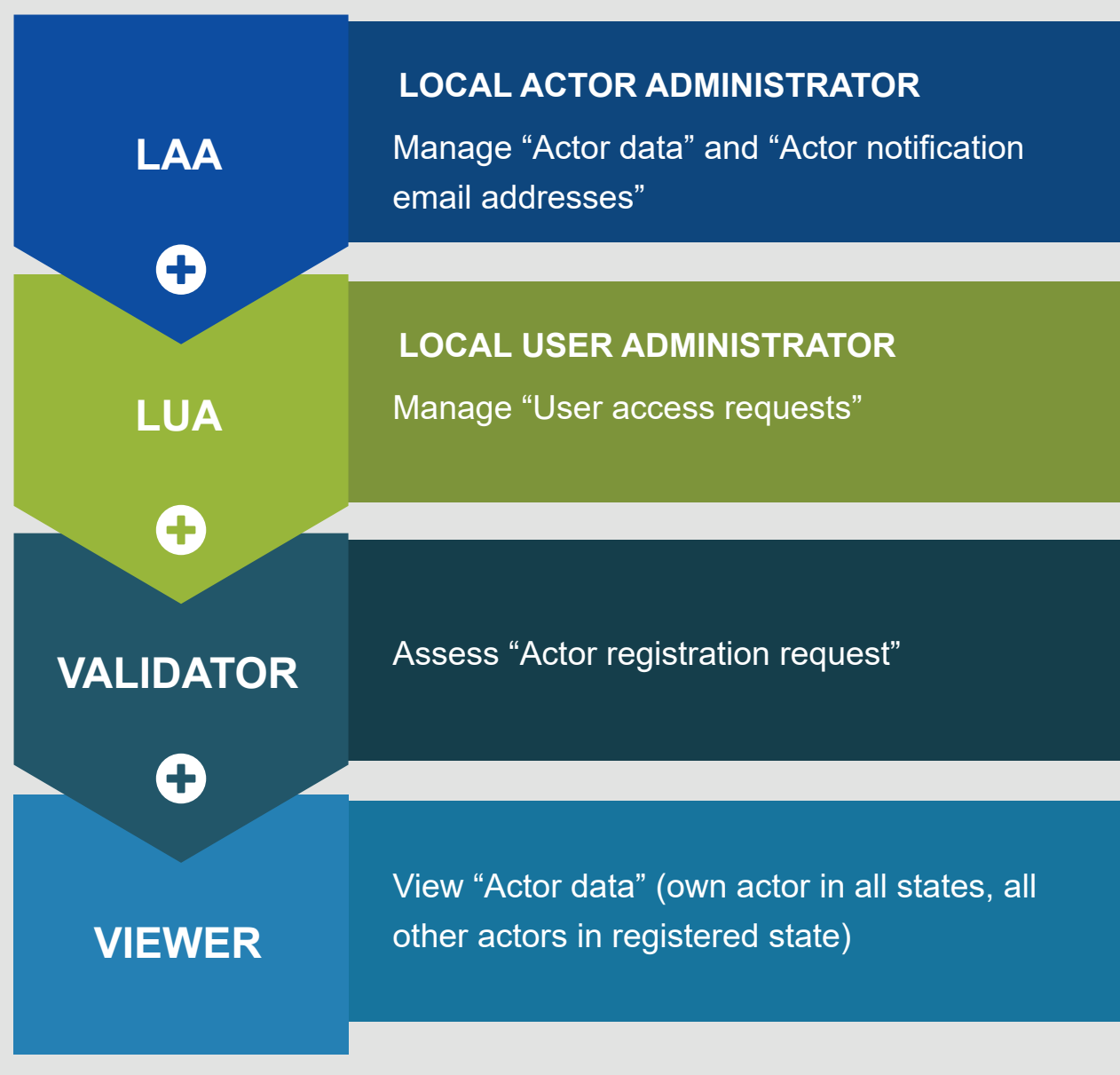
Once an actor is registered in EUDAMED with its first Local Actor Administrator (LAA) and has obtained an Actor ID/SRN, more **users** of this actor can **request access** to EUDAMED.



PROFILES' HIERARCHY

How does the grants/rights work in EUDAMED?

COMPETENT AUTHORITIES



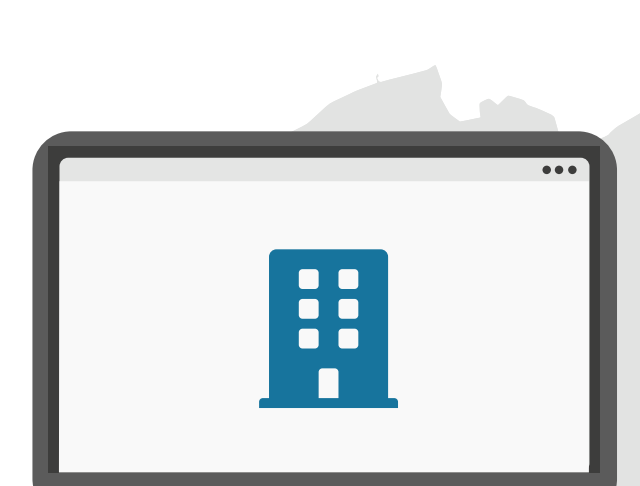
PROFILES' HIERARCHY

Higher level profiles contain all lower level grants/rights.
The LAA is the highest profile and contains the grants/rights of all the lower profiles.
The LUA contains the grants/rights of its lower profiles, etc.

AUTHORISED REPRESENTATIVE	MANUFACTURER	SYSTEM & PROCEDURE PACK PRODUCER	IMPORTER
LAA	LAA	LAA	LAA
LUA	LUA	LUA	LUA
Verifier Verify "Actor registration request" and submitted mandates associated to their actor	Mandate manager Manage its "Mandates" (Only for Non EU-MF)	Viewer	Linker Manage its "Link with Non EU-MF"
Viewer	Viewer		Viewer

USER ACCESS REQUEST PROCESS

How to get access to EUDAMED for a user of an actor already registered



EC strongly recommend having at least 2 LAA to act as a fail save mechanism if one should be unable to respond. Furthermore, an actor needs to have at all-time at least 1 active LAA, it will be impossible to terminate the last LAA for an actor.

AUTHORISED REPRESENTATIVE, BE-AR-000000001, Actor A [Belgium]

