

PHILANTHROPIC INVESTMENTS IN HEALTH & SOCIAL CARE

MADELEINE CLARKE, CHAIR

EUROPEAN VENTURE PHILANTHROPY ASSOCIATION





ABOUT US: CENTRO MEDICO SANTAGOSTINO

Every day, we try:

to **meet a growing and unfulfilled need** by an innovative and alternative health model;

to **fill in the lack** of the public service (NHS), giving high quality medical services at affordable prices (e.g. Dentistry and Rehabilitation);

to be an **opportunity**: the third option between National Health Service and high-cost private health-care providers.

Centro Medico Santagostino majority investor is *Oltre Venture*. *Oltre* collects investments from individuals, foundations and corporations that choose to make their "calm and responsible capitals" available to unique and innovative projects.

AFFORDABLE WITHOUT COMPROMISE



YOUNG, SMILING AND UNCONVENTIONAL



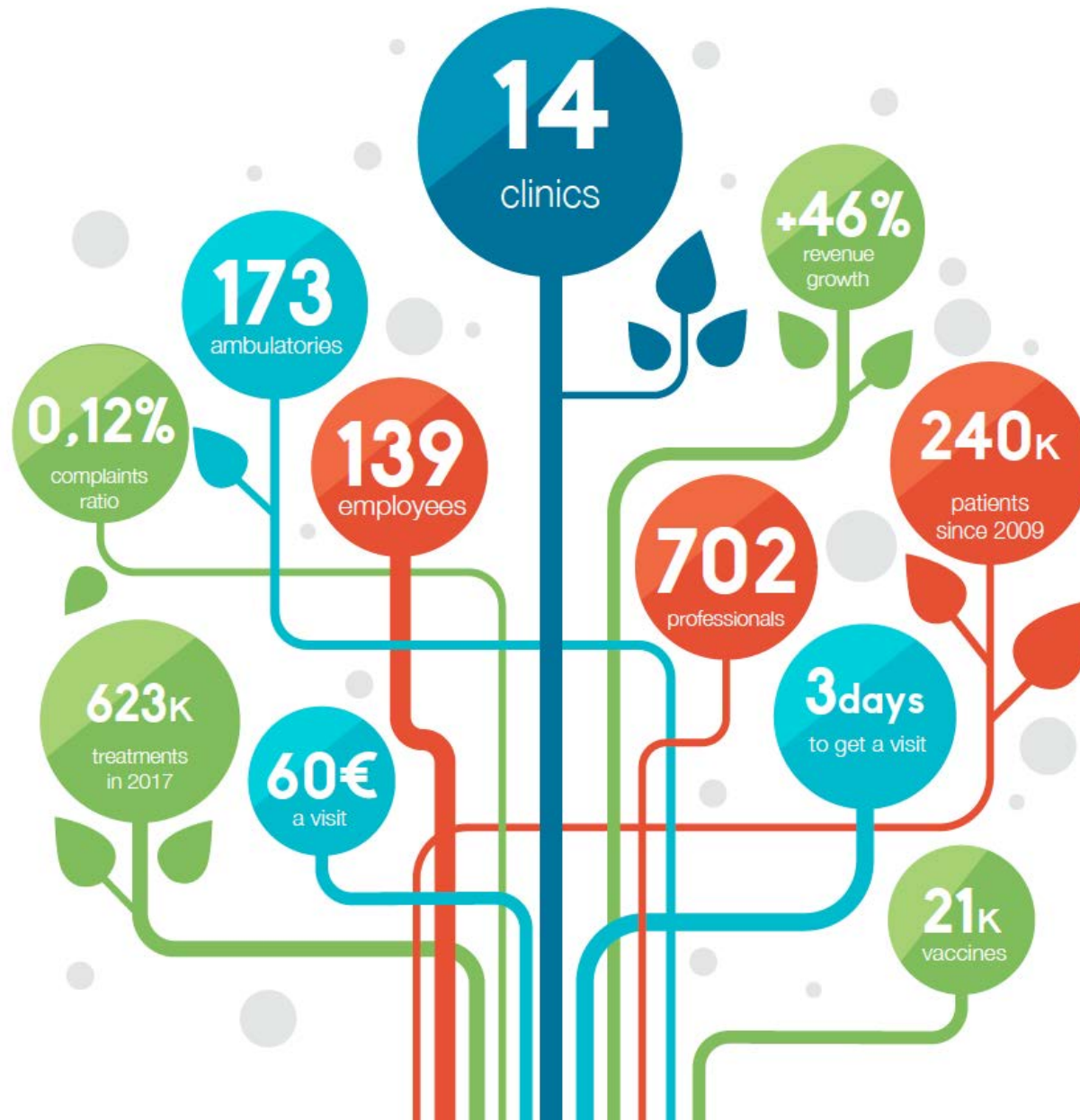
INNOVATIVE



SO... WHERE WOULD YOU CHOOSE TO SEAT?



HIGHLIGHTS: 2017



REVENUES: 2017



LONG TERM OBJECTIVES

We aim to:

become an **economically sustainable alternative health model**, replicable in other cities and countries;

become a **reference point**, innovative and high-quality based, for non-acute medicine;

provide **services for those who are unable to pay**, through donations and voluntary unpaid work by our doctors.

INCREASE TERRITORIAL
PRESENCE

WIDEN MEDICAL OFFER

ENTER THE PUBLIC DEBATE

CHANGE THE HEALTH
SYSTEM



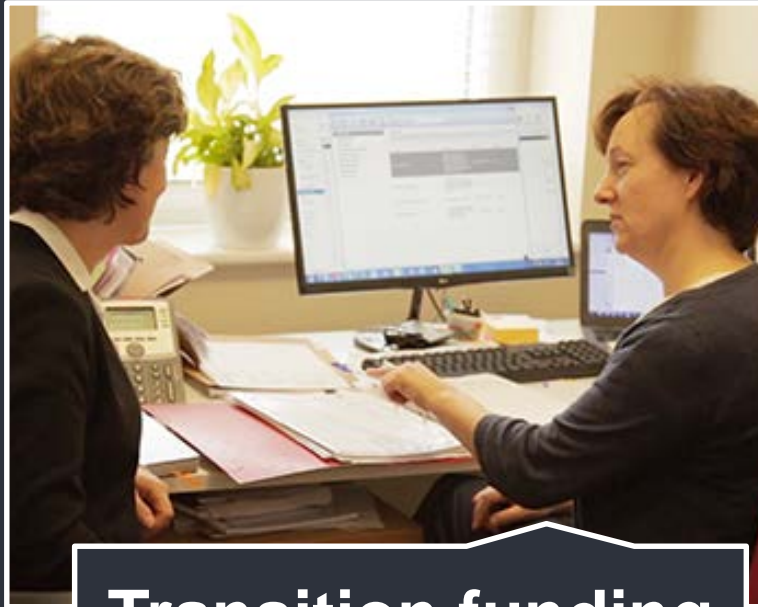
The logo features the word "GENIO" in a white, uppercase, sans-serif font. The text is centered horizontally and is surrounded by a cluster of pink dots of varying sizes, creating a starburst or particle effect. The dots are most concentrated around the letters and fade out towards the edges of the central graphic.

GENIO

**Specialists in working with
Government and philanthropy to
personalise social services**



Public Service Reform



Transition funding
(public & private)



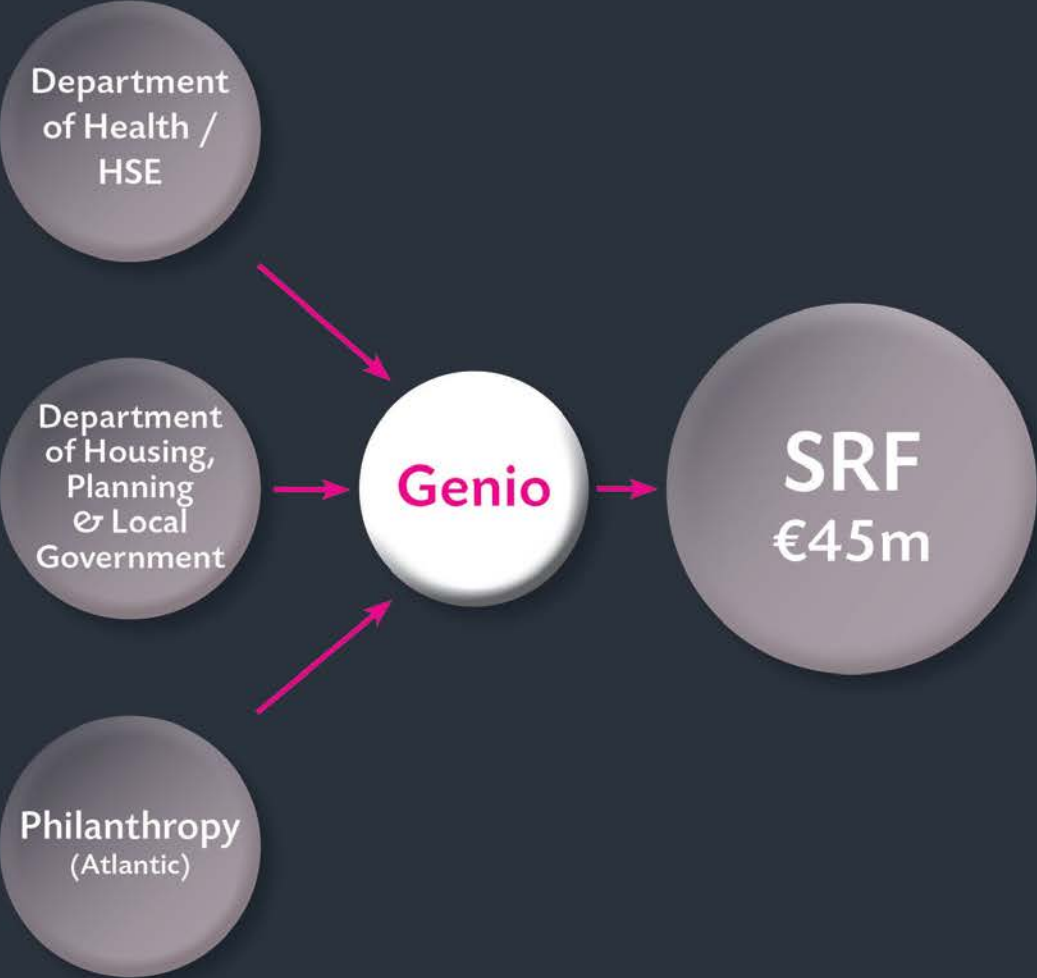
Capacity Building



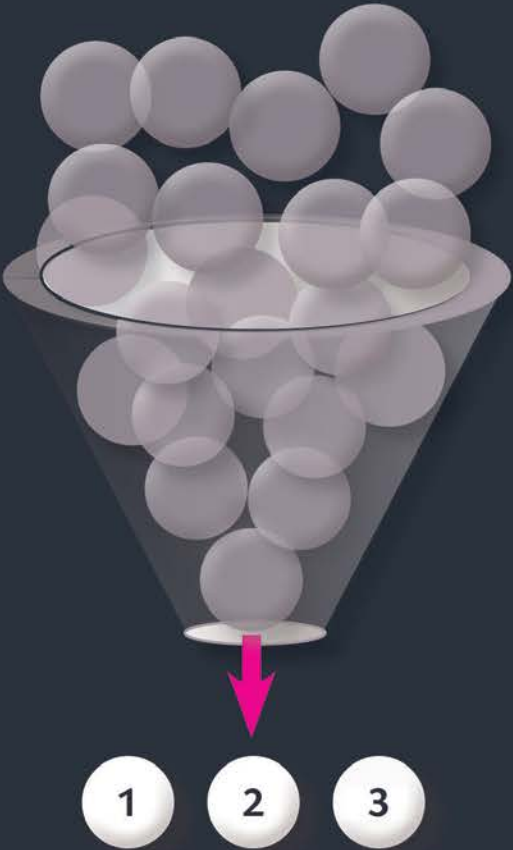
Impact measurement & action research

Service Reform Fund (SRF)

Establishing SRF



Call for proposals



Embedding and Scaling Innovation

10 YEARS



€70 MILLION



226 PROJECTS



**8,000 PEOPLE
SUPPORTED**



**19,000 PEOPLE
CAPACITY BUILDING**





City of Philadelphia
Public



**Convening &
shared learning**



**Independent
measurement**



**Multiannual
spending**

A black and white photograph of a person's hands typing on a laptop keyboard. The person is wearing a light-colored, long-sleeved button-down shirt. The laptop is open and positioned on the left side of the frame. A large, thin pink circle is superimposed over the image, centered on the text. The background is blurred, showing what appears to be a desk or office environment.

**Provides
independence**

**Works wherever
public resources need
to be refocussed to
achieve better
outcomes more
efficiently**

**Within & across
multiple countries**

THANK YOU

MADELEINE CLARKE, CHAIR

EUROPEAN VENTURE PHILANTHROPY ASSOCIATION

