



Expert Group on Social Determinants and Health Inequalities Luxembourg, 14 March 2017

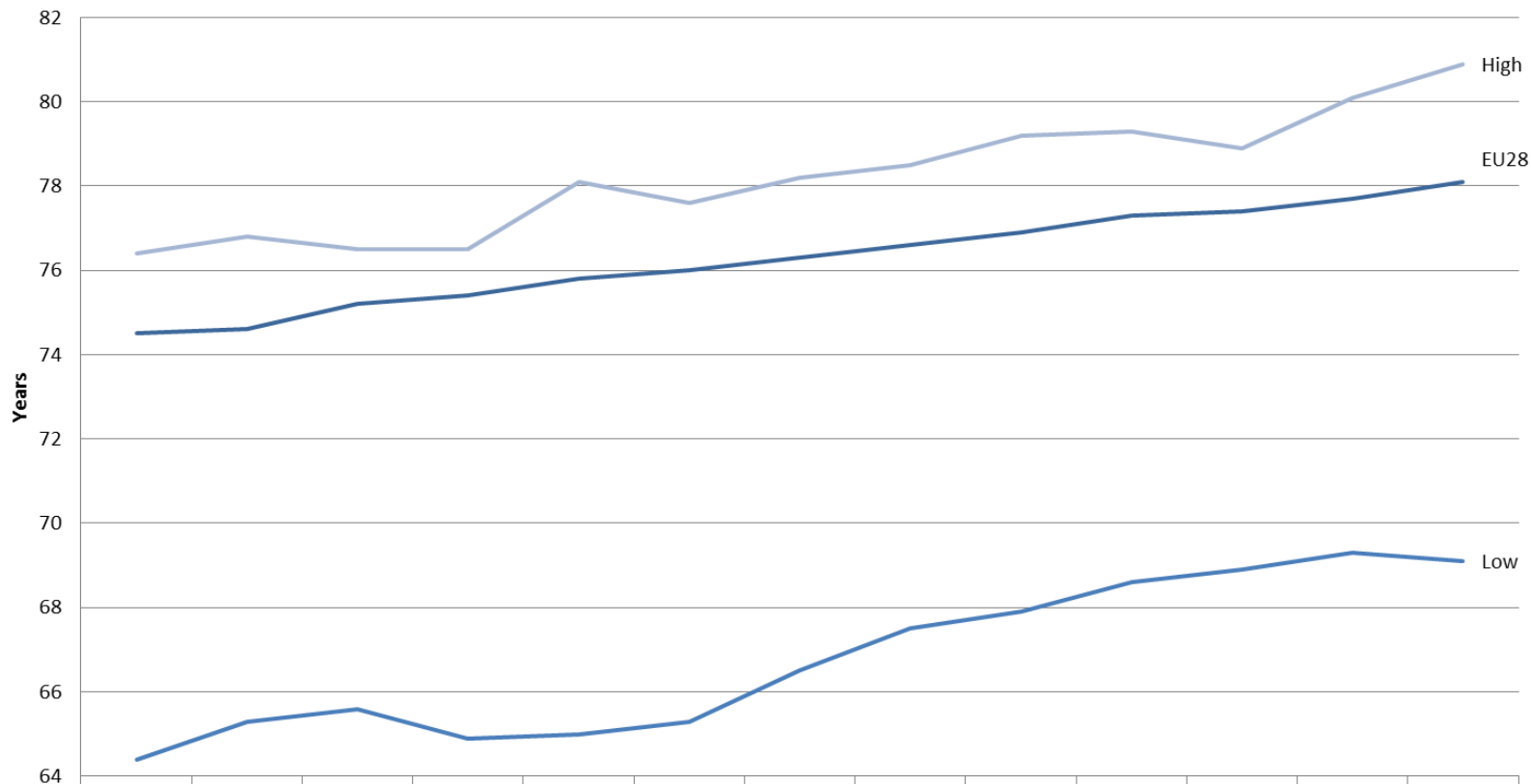
State of play on health inequalities in the EU in 2017

DG SANTE

F. Lefebvre, Country knowledge and Scientific Committees Unit (SANTE.C2)

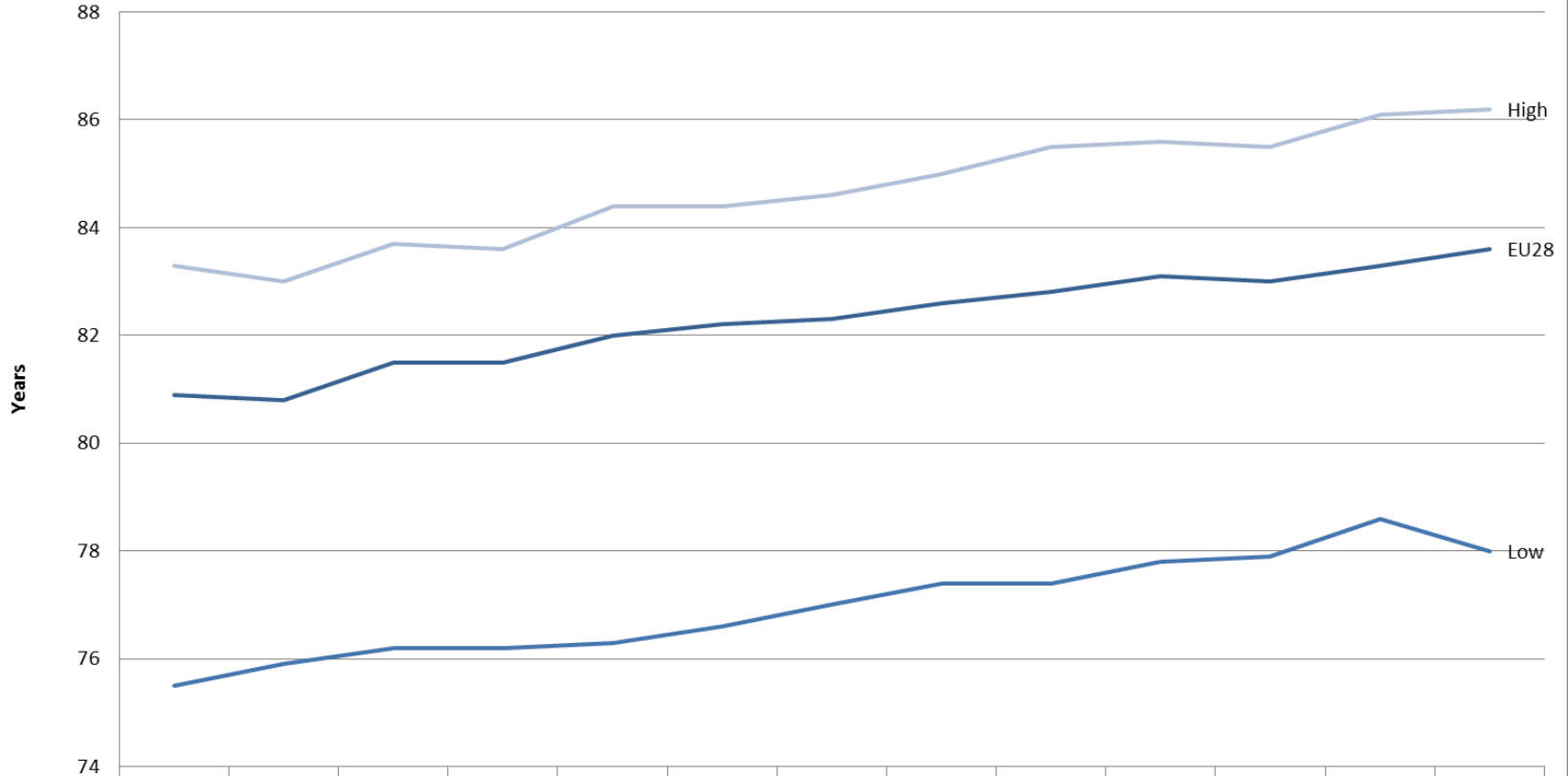
Life expectancy at birth for males - Trend 2002 - 2014

EU28, lowest and highest Member States values



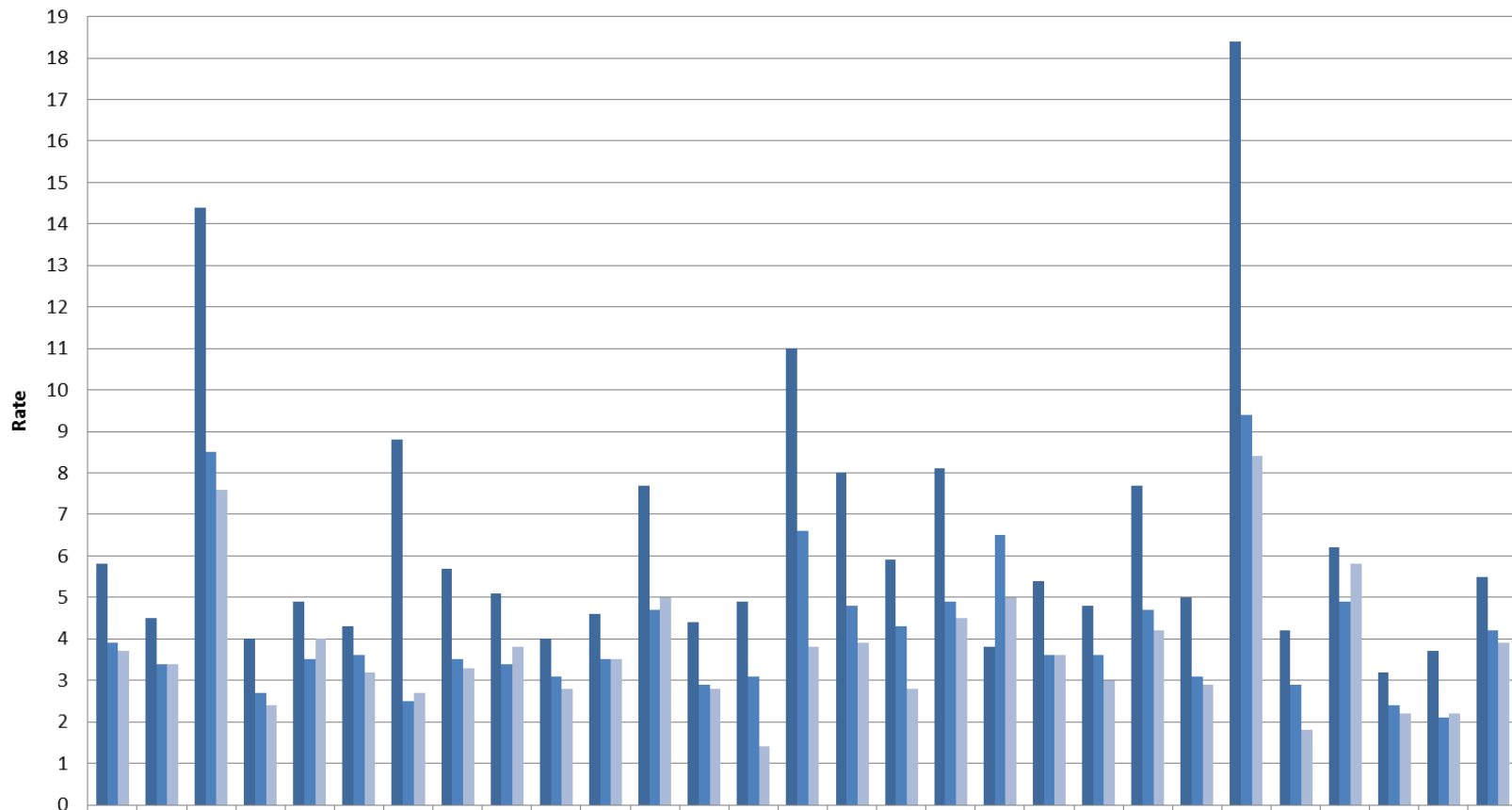
	2002	2003	2004	2005	2006	2007	2008	2009	2010	2011	2012	2013	2014
EU28	74.5	74.6	75.2	75.4	75.8	76	76.3	76.6	76.9	77.3	77.4	77.7	78.1
Low	64.4	65.3	65.6	64.9	65	65.3	66.5	67.5	67.9	68.6	68.9	69.3	69.1
High	76.4	76.8	76.5	76.5	78.1	77.6	78.2	78.5	79.2	79.3	78.9	80.1	80.9

Life expectancy at birth for females - Trend 2002 - 2014 EU28, lowest and highest Member States values



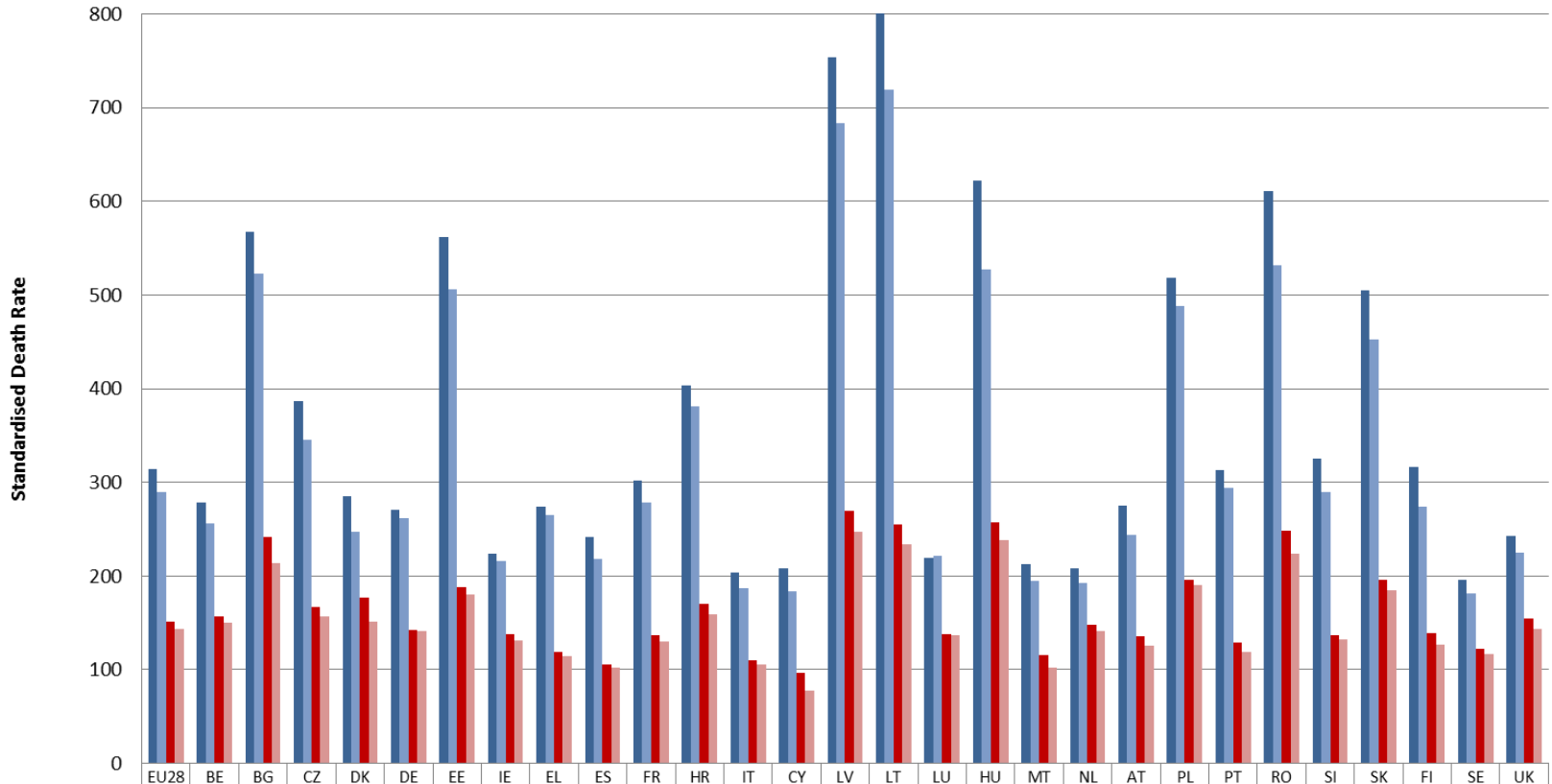
	2002	2003	2004	2005	2006	2007	2008	2009	2010	2011	2012	2013	2014
EU28	80.9	80.8	81.5	81.5	82	82.2	82.3	82.6	82.8	83.1	83	83.3	83.6
Low	75.5	75.9	76.2	76.2	76.3	76.6	77	77.4	77.4	77.8	77.9	78.6	78
High	83.3	83	83.7	83.6	84.4	84.4	84.6	85	85.5	85.6	85.5	86.1	86.2

Infant mortality rate per 1,000 live births - 2001, 2011 and 2014



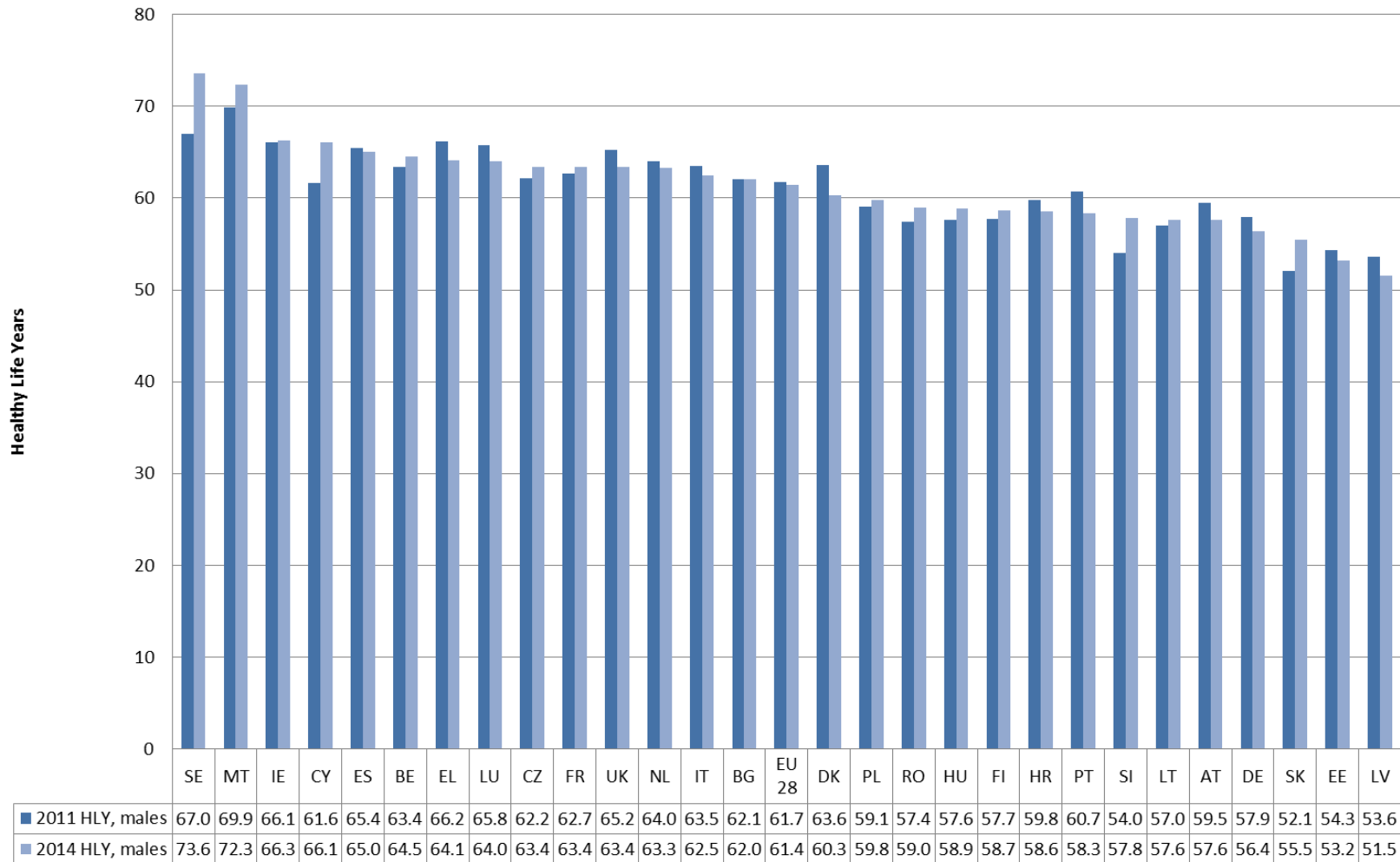
	EU28	BE	BG	CZ	DK	DE	EE	IE	EL	ES	FR	HR	IT	CY	LV	LT	LU	HU	MT	NL	AT	PL	PT	RO	SI	SK	FI	SE	UK
■ 2001	5.8	4.5	14.4	4	4.9	4.3	8.8	5.7	5.1	4	4.6	7.7	4.4	4.9	11	8	5.9	8.1	3.8	5.4	4.8	7.7	5	18.4	4.2	6.2	3.2	3.7	5.5
■ 2011	3.9	3.4	8.5	2.7	3.5	3.6	2.5	3.5	3.4	3.1	3.5	4.7	2.9	3.1	6.6	4.8	4.3	4.9	3.6	3.6	4.7	3.1	9.4	2.9	4.9	2.4	2.1	4.2	
■ 2014	3.7	3.4	7.6	2.4	4	3.2	2.7	3.3	3.8	2.8	3.5	5	2.8	1.4	3.8	3.9	2.8	4.5	5	3.6	3	4.2	2.9	8.4	1.8	5.8	2.2	2.2	3.9

Standardised Death Rate under age 65 years by sex, 2010 & 2013, all causes of death

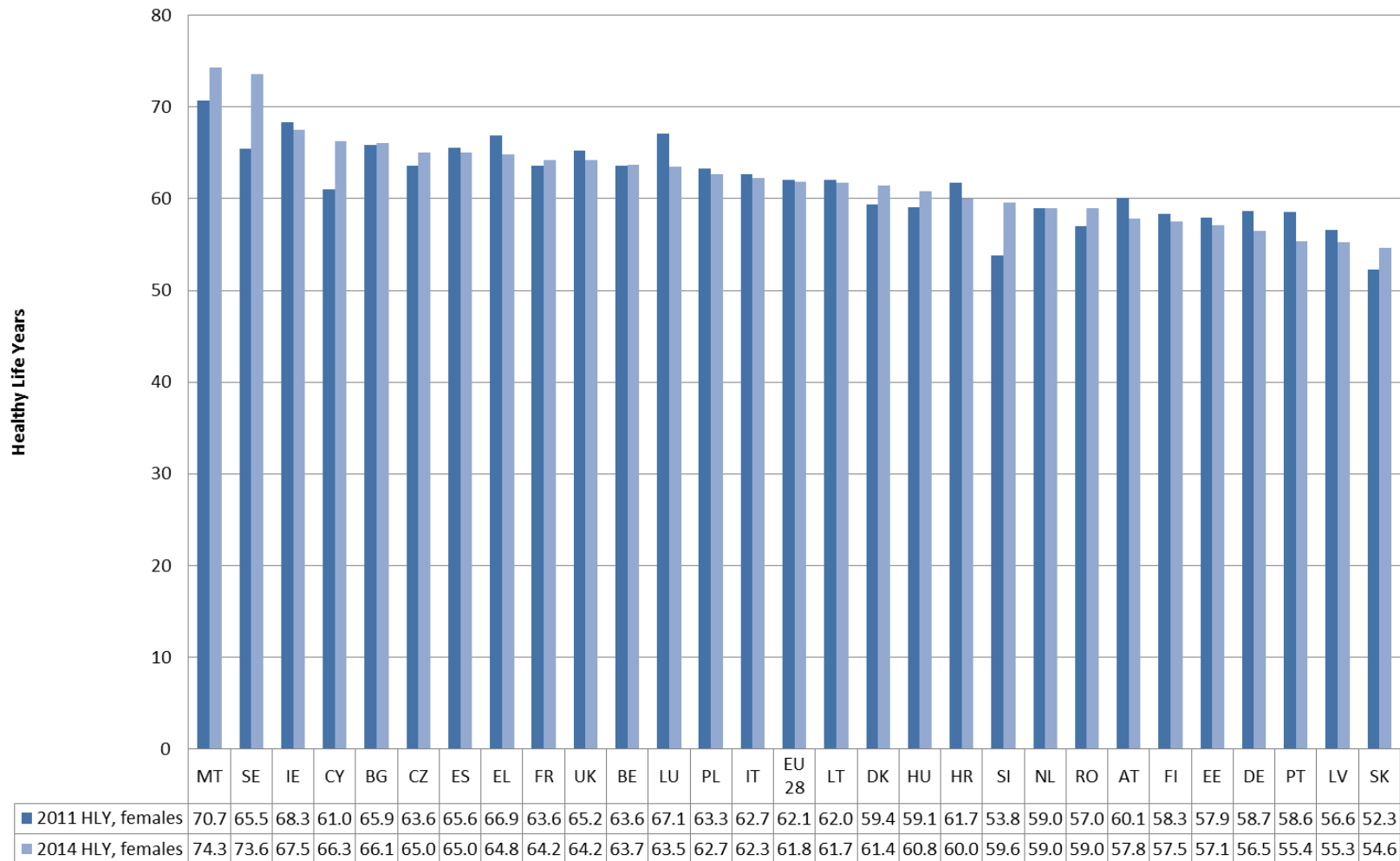


	EU28	BE	BG	CZ	DK	DE	EE	IE	EL	ES	FR	HR	IT	CY	LV	LT	LU	HU	MT	NL	AT	PL	PT	RO	SI	SK	FI	SE	UK
■ Males, 2010	314.4	278.3	567.8	386.8	285.0	271.2	562.1	223.8	273.9	242.0	301.7	403.1	204.1	208.5	753.2	800.5	218.9	621.6	212.4	208.1	275.1	518.8	312.6	611.0	325.3	504.6	316.3	196.1	243.2
■ Males, 2013	289.9	255.7	522.9	344.8	247.1	261.8	506.0	215.6	264.6	218.6	278.7	381.1	187.2	183.1	683.2	718.9	221.2	527.6	194.2	192.5	243.8	487.7	294.3	532.0	289.7	452.7	274.4	181.1	225.1
■ Females, 2010	150.9	157.0	241.3	166.7	176.5	142.5	188.2	137.4	119.2	105.8	136.6	170.6	109.7	96.60	269.8	255.2	137.4	257.0	115.6	147.8	135.4	196.2	129.5	247.9	136.3	195.7	138.8	122.5	154.7
■ Females, 2013	143.3	150.2	214.2	157.3	151.0	140.8	180.8	130.9	114.4	102.2	130.0	159.4	105.0	77.97	247.6	234.1	136.7	237.9	102.3	141.2	125.2	190.6	119.1	224.1	131.7	184.2	126.8	117.1	143.6

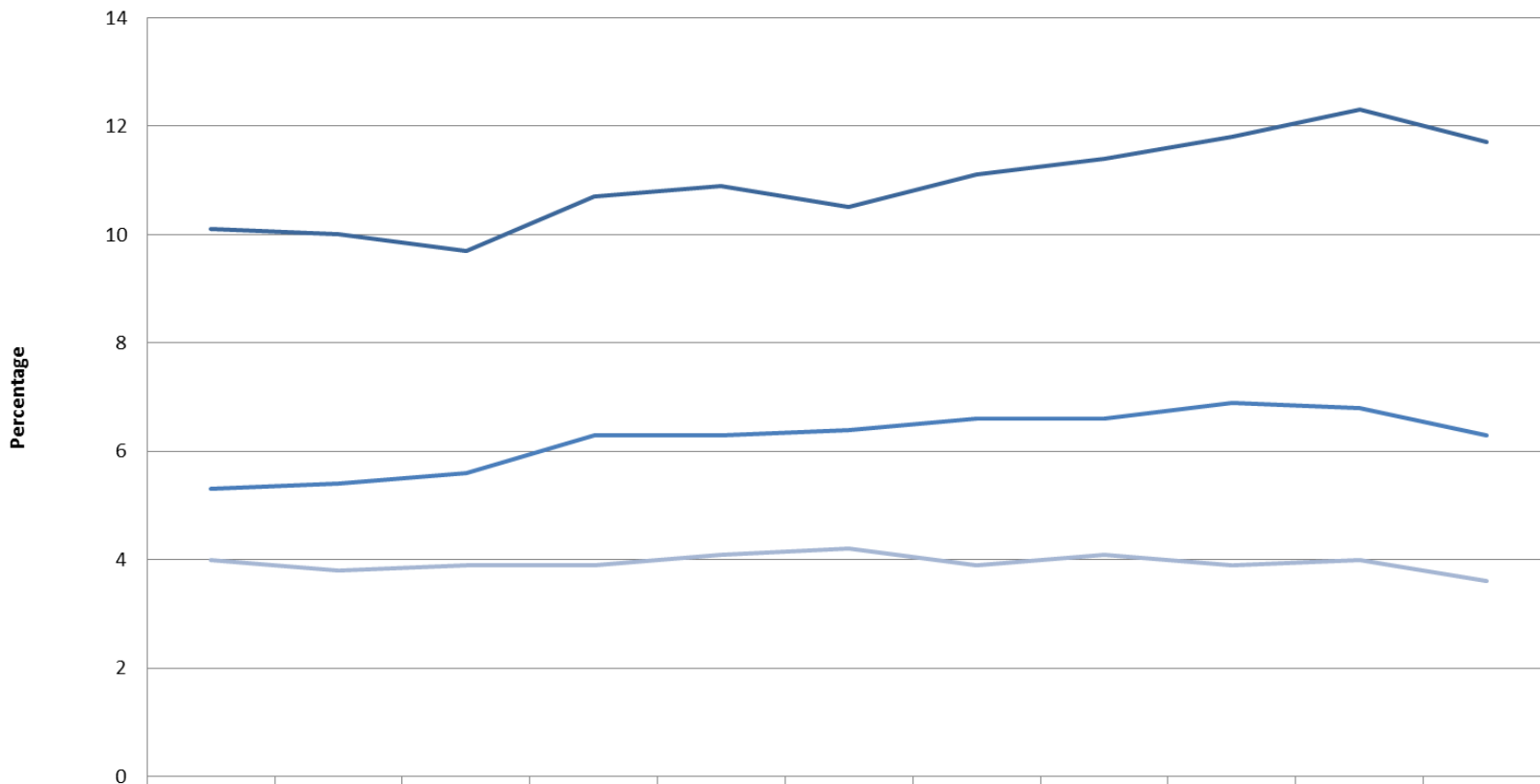
Healthy life years at birth for males, 2011 and 2014



Healthy life years at birth for females, 2011 and 2014

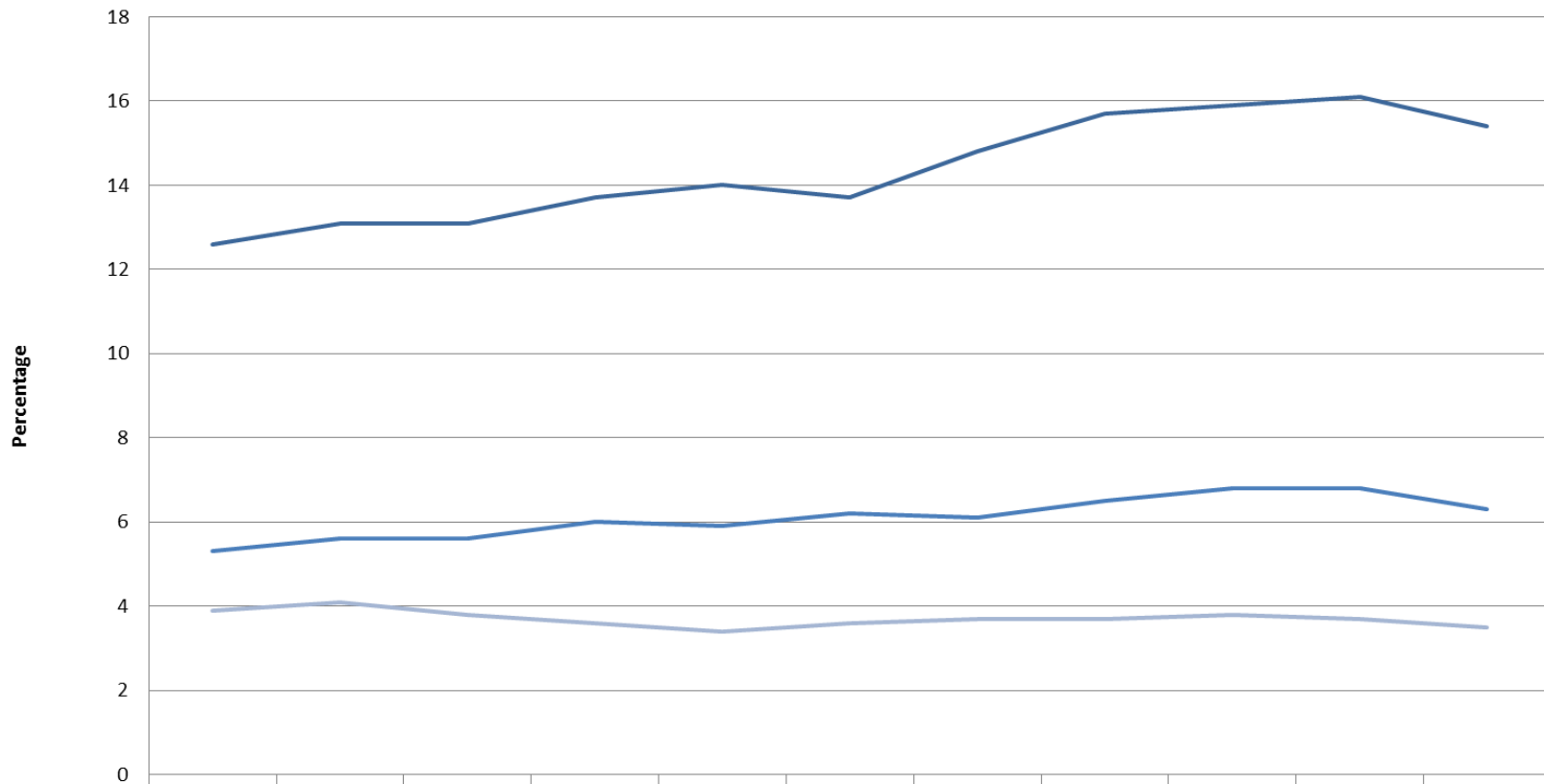


Self-perceived limitations in daily activities as 'severely hampered' by educational level for males - Trend 2005 - 2015 in the EU28



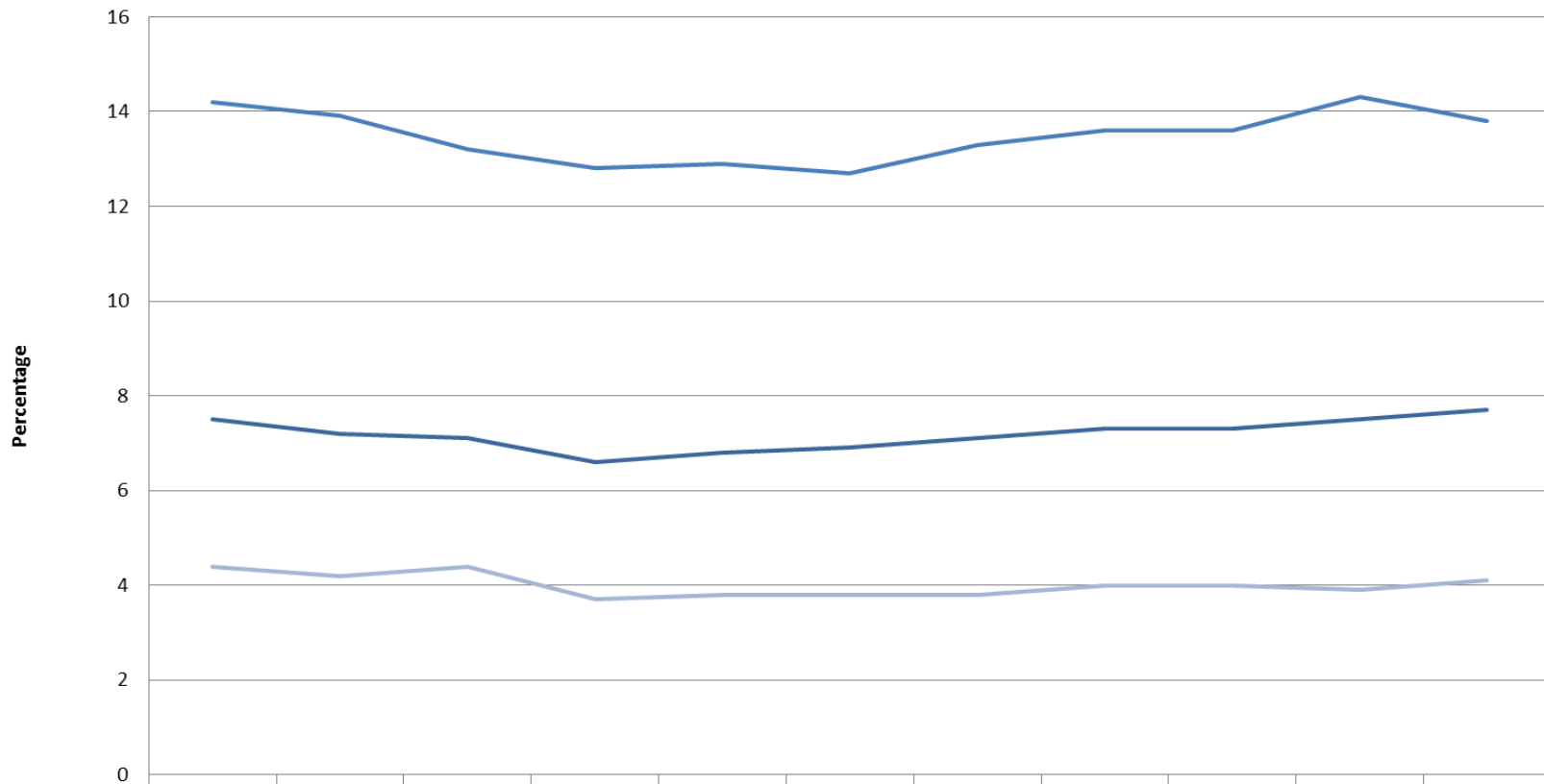
	2005	2006	2007	2008	2009	2010	2011	2012	2013	2014	2015
Low	10.1	10	9.7	10.7	10.9	10.5	11.1	11.4	11.8	12.3	11.7
Medium	5.3	5.4	5.6	6.3	6.3	6.4	6.6	6.6	6.9	6.8	6.3
High	4	3.8	3.9	3.9	4.1	4.2	3.9	4.1	3.9	4	3.6

Self-perceived limitations in daily activities as 'severely hampered' by educational level for females - Trend 2005 - 2015 in the EU28



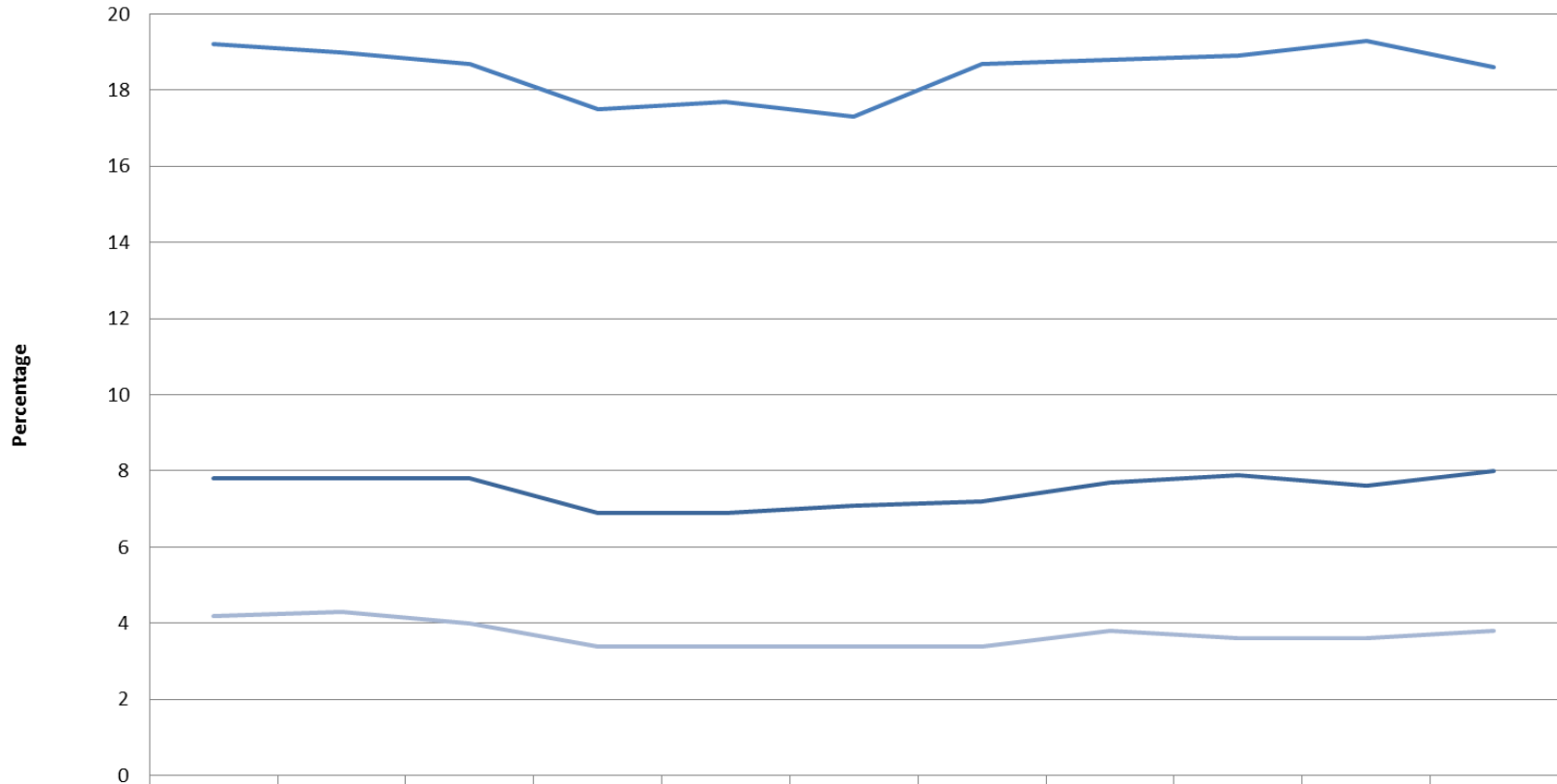
	2005	2006	2007	2008	2009	2010	2011	2012	2013	2014	2015
Low	12.6	13.1	13.1	13.7	14	13.7	14.8	15.7	15.9	16.1	15.4
Medium	5.3	5.6	5.6	6	5.9	6.2	6.1	6.5	6.8	6.8	6.3
High	3.9	4.1	3.8	3.6	3.4	3.6	3.7	3.7	3.8	3.7	3.5

Self-perceived health as bad or very bad by educational level for males - Trend 2005 - 2015 in the EU28



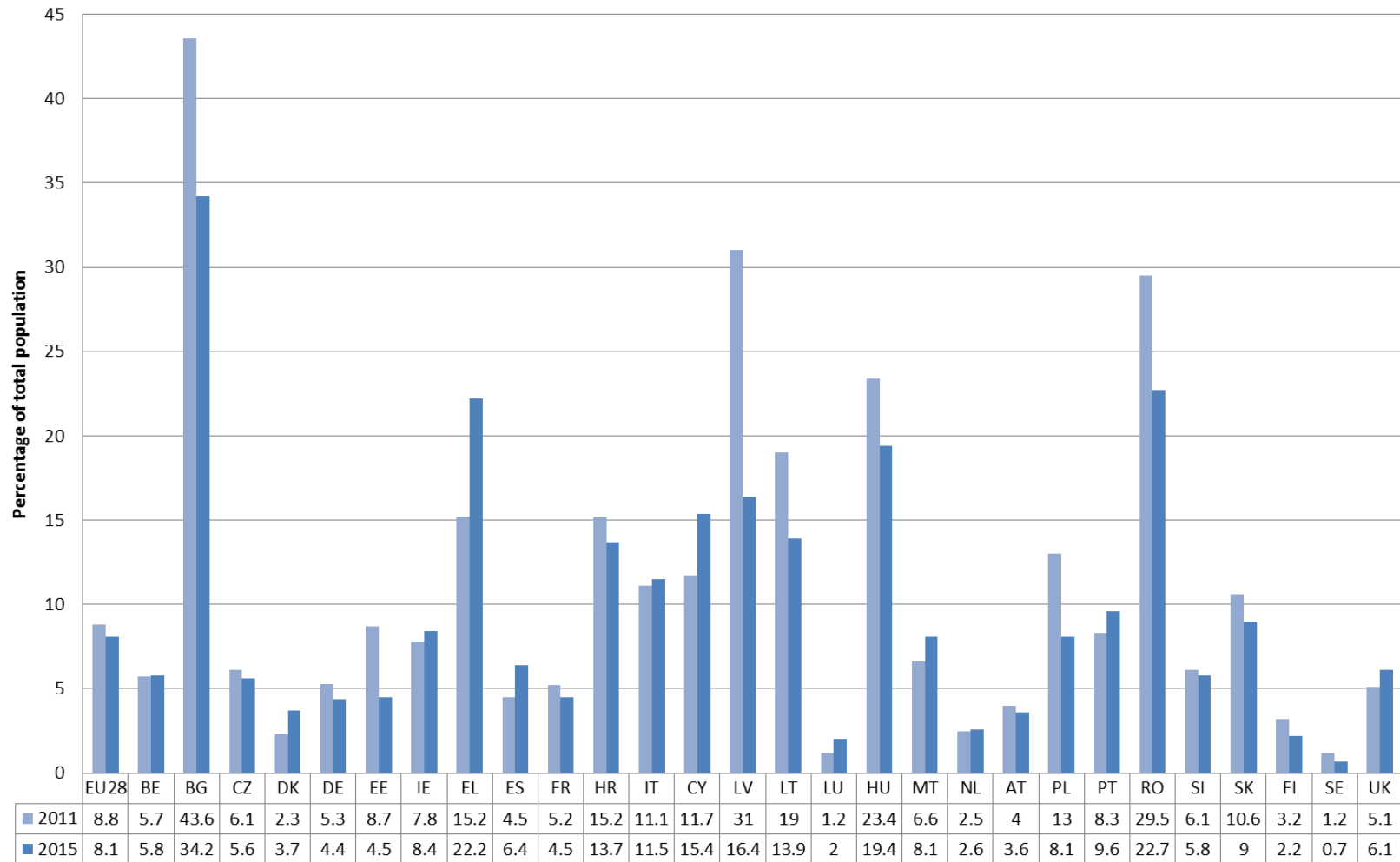
	2005	2006	2007	2008	2009	2010	2011	2012	2013	2014	2015
Low	14.2	13.9	13.2	12.8	12.9	12.7	13.3	13.6	13.6	14.3	13.8
Medium	7.5	7.2	7.1	6.6	6.8	6.9	7.1	7.3	7.3	7.5	7.7
High	4.4	4.2	4.4	3.7	3.8	3.8	3.8	4	4	3.9	4.1

Self-perceived health as bad or very bad by educational level for females - Trend 2005 - 2015 in the EU28

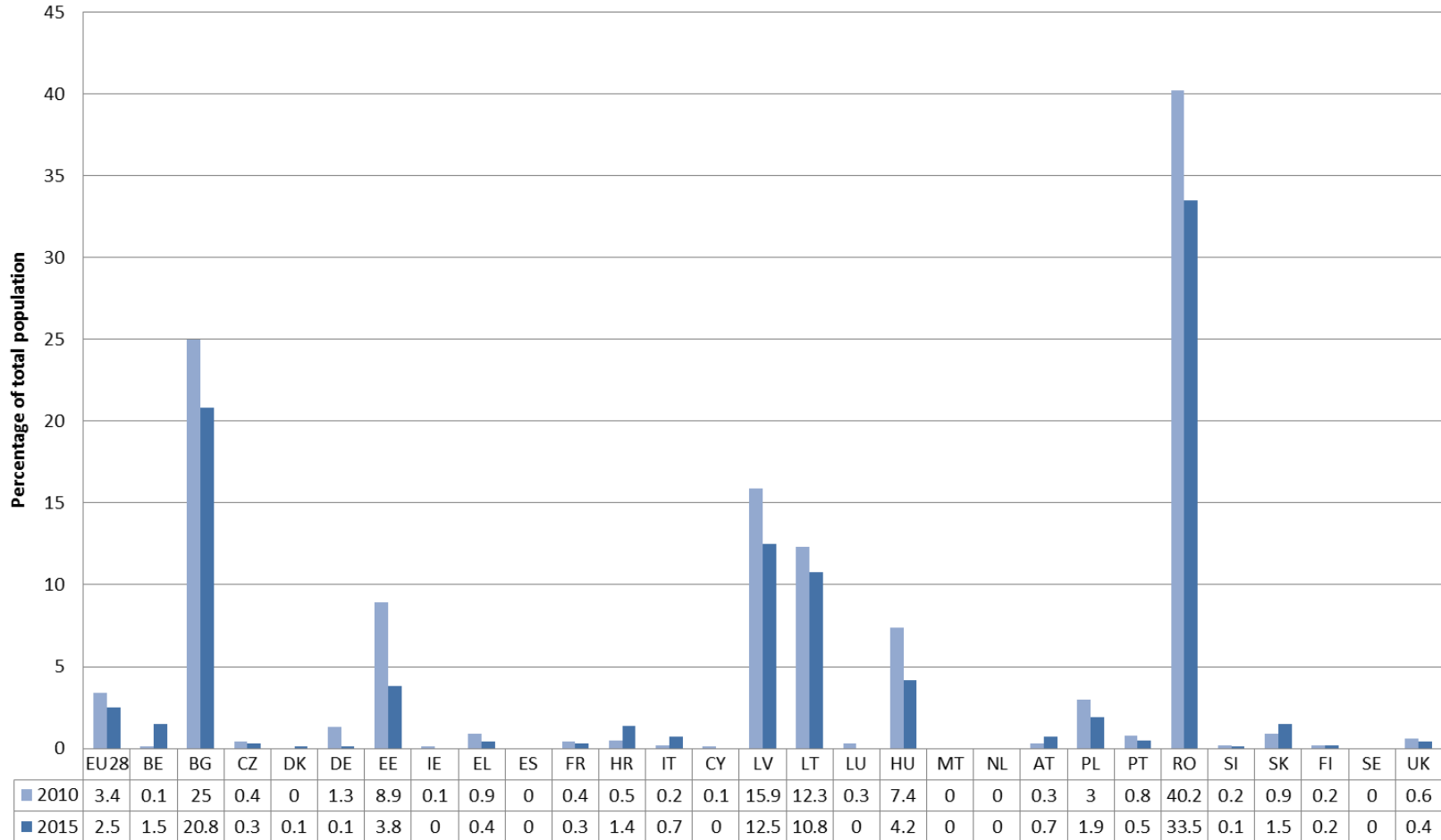


	2005	2006	2007	2008	2009	2010	2011	2012	2013	2014	2015
Low	19.2	19	18.7	17.5	17.7	17.3	18.7	18.8	18.9	19.3	18.6
Medium	7.8	7.8	7.8	6.9	6.9	7.1	7.2	7.7	7.9	7.6	8
High	4.2	4.3	4	3.4	3.4	3.4	3.4	3.8	3.6	3.6	3.8

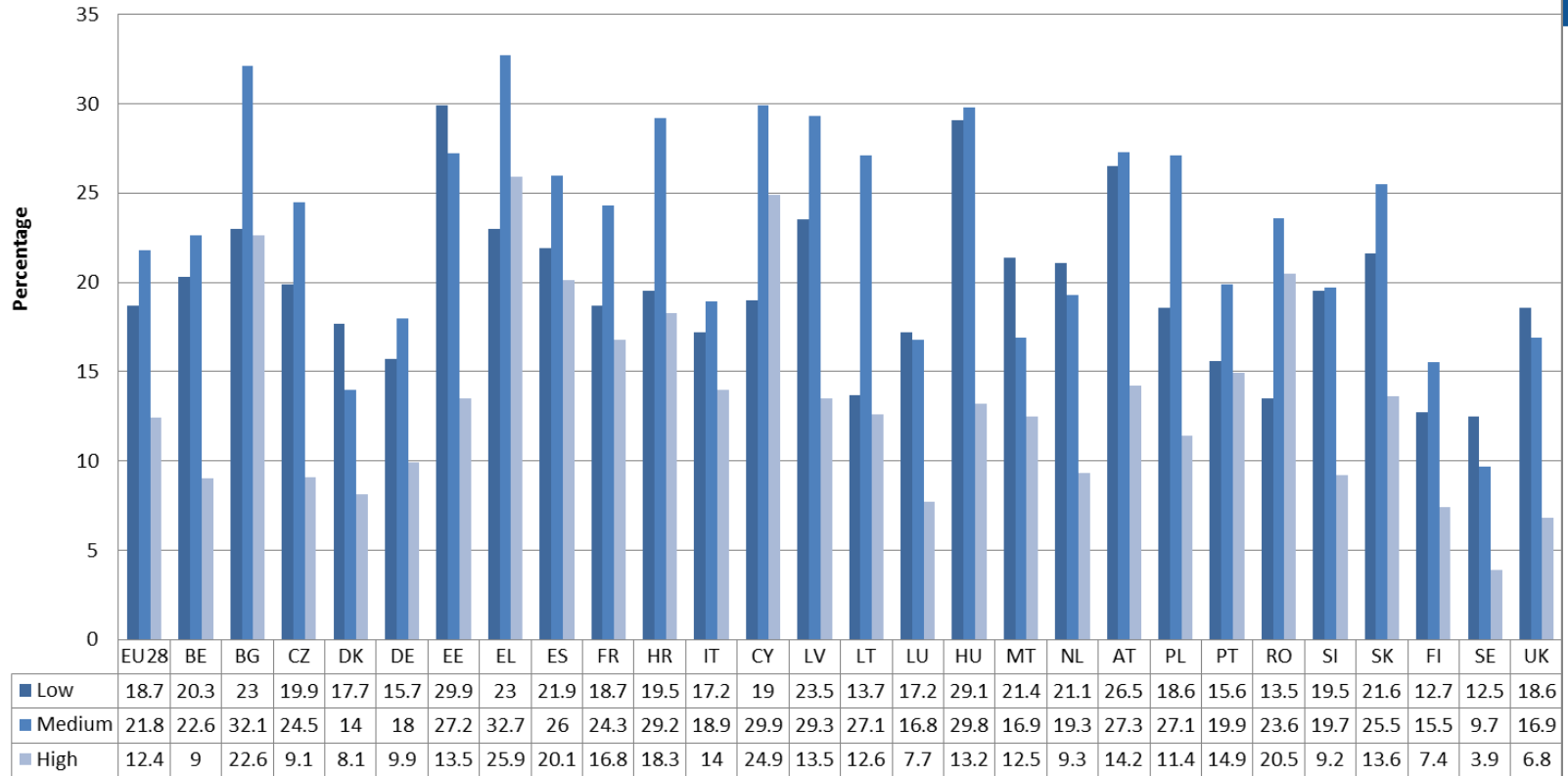
Severe material deprivation in the EU - 2011 - 2015



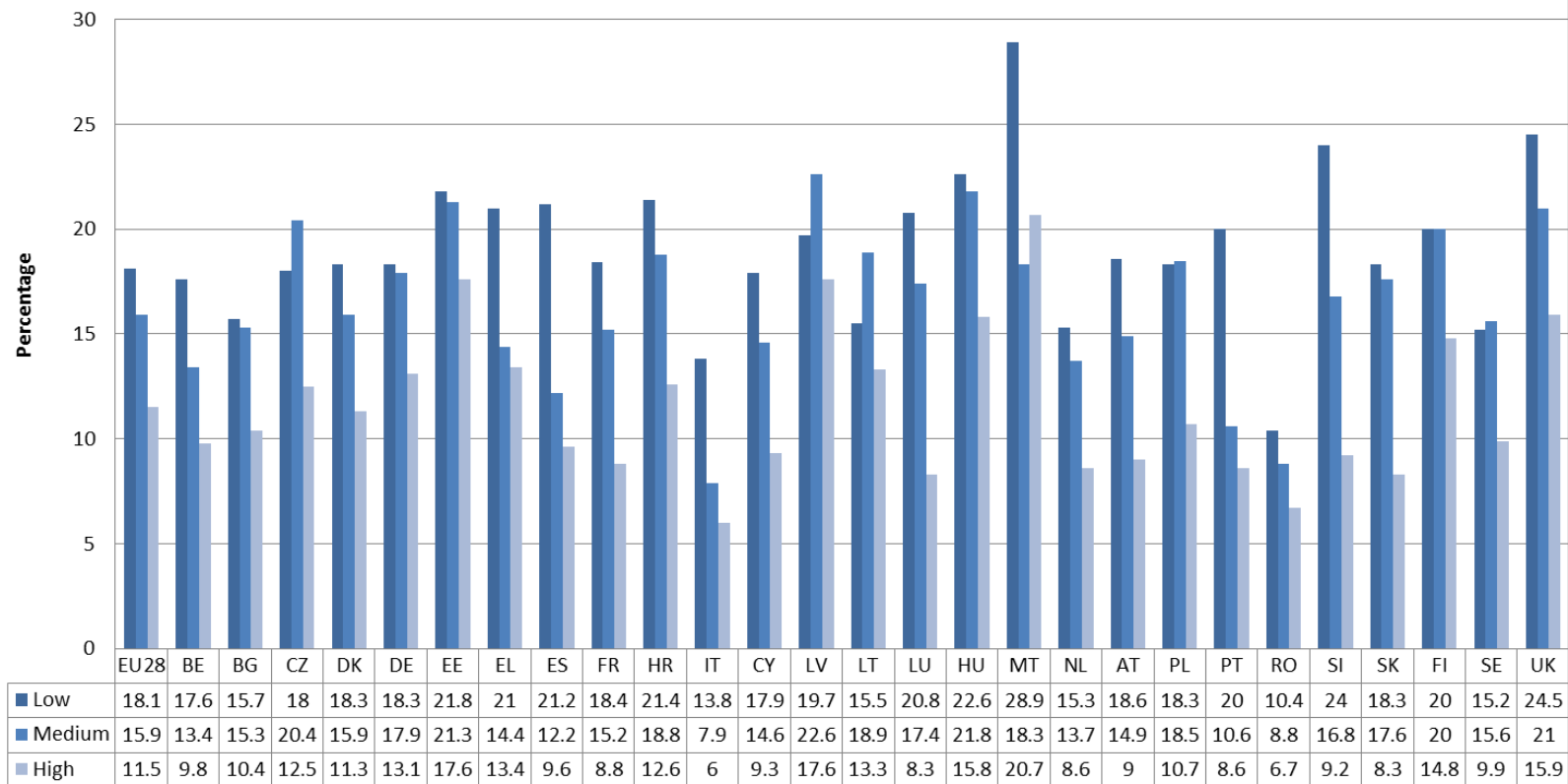
Share of total population not having indoor flushing toilet for the sole use of their household for households with dependent children in 2010 and 2015



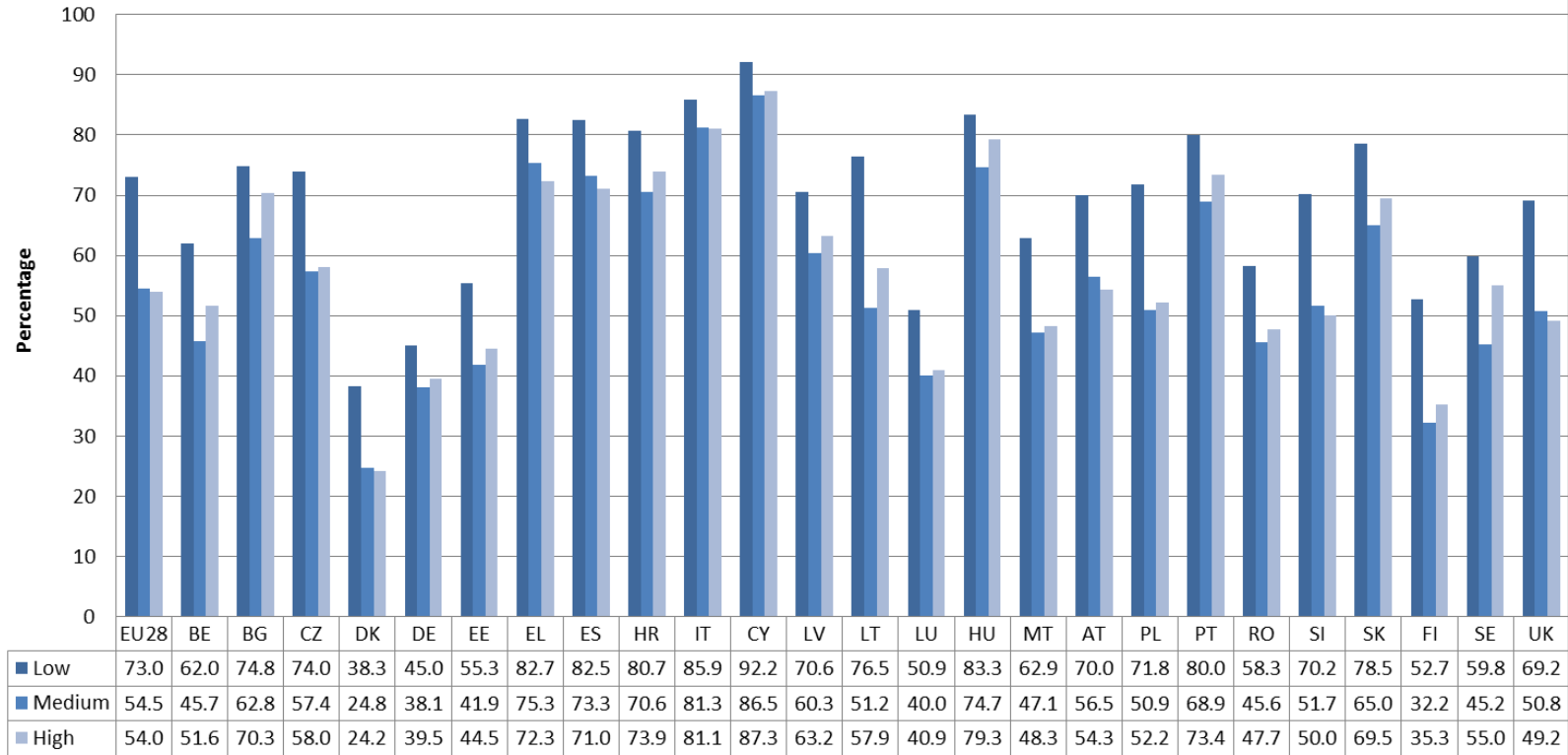
Daily smokers of cigarettes by educational level in the EU28 (2014)



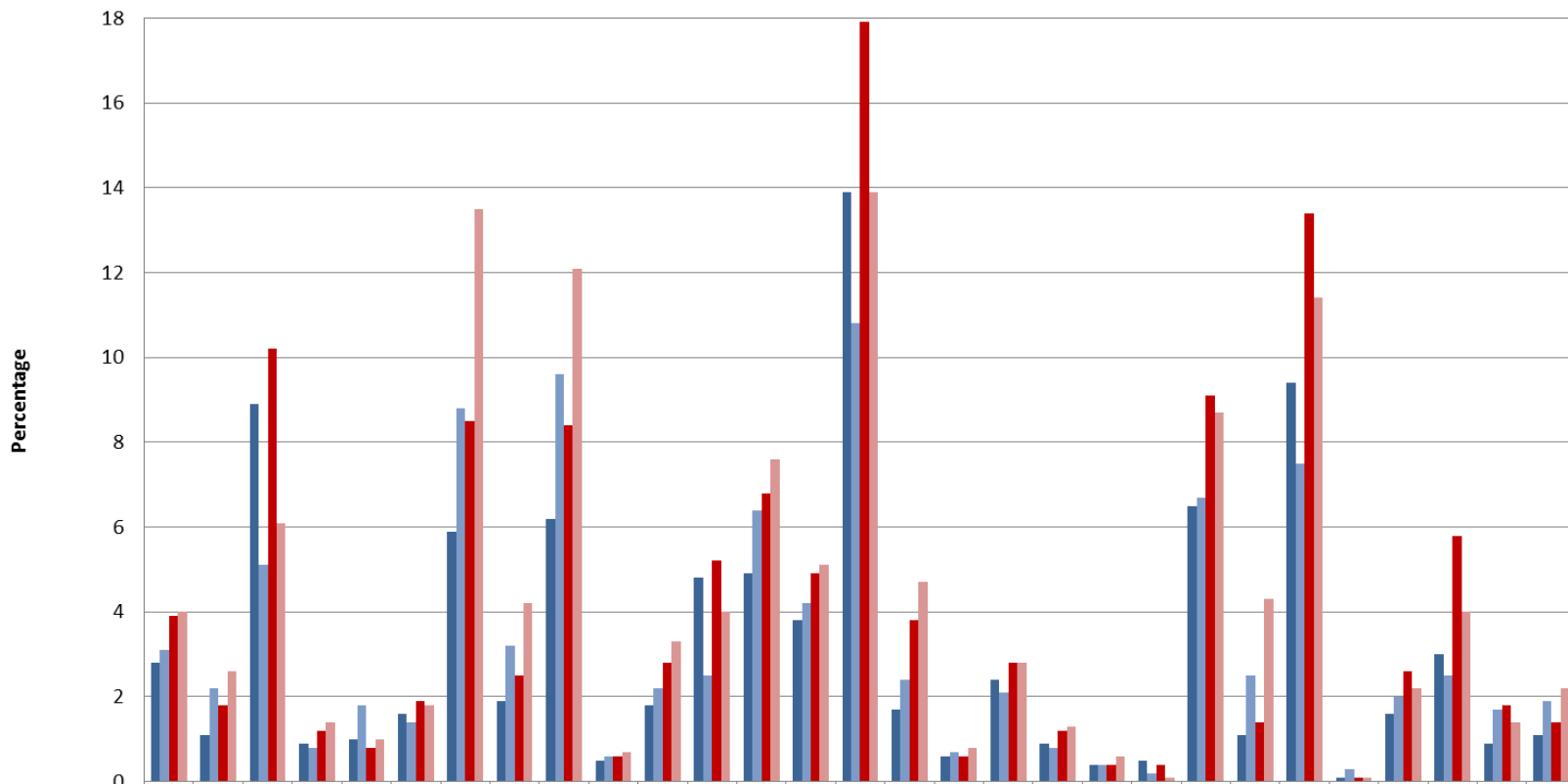
Obesity by educational level in the EU28 (2014)



No binge drinking in the last 12 months by educational level in the EU28 (2014)



Self-reported unmet needs for medical examination for reasons of barriers of access (too expensive, too far to travel or waiting list) by sex, 2011 and 2014



	EU28	BE	BG	CZ	DK	DE	EE	IE	EL	ES	FR	HR	IT	CY	LV	LT	LU	HU	MT	NL	AT	PL	PT	RO	SI	SK	FI	SE	UK
■ Males, 2011	2.8	1.1	8.9	0.9	1	1.6	5.9	1.9	6.2	0.5	1.8	4.8	4.9	3.8	13.9	1.7	0.6	2.4	0.9	0.4	0.5	6.5	1.1	9.4	0.1	1.6	3	0.9	1.1
■ Males, 2014	3.1	2.2	5.1	0.8	1.8	1.4	8.8	3.2	9.6	0.6	2.2	2.5	6.4	4.2	10.8	2.4	0.7	2.1	0.8	0.4	0.2	6.7	2.5	7.5	0.3	2	2.5	1.7	1.9
■ Females, 2011	3.9	1.8	10.2	1.2	0.8	1.9	8.5	2.5	8.4	0.6	2.8	5.2	6.8	4.9	17.9	3.8	0.6	2.8	1.2	0.4	0.4	9.1	1.4	13.4	0.1	2.6	5.8	1.8	1.4
■ Females, 2014	4	2.6	6.1	1.4	1	1.8	13.5	4.2	12.1	0.7	3.3	4	7.6	5.1	13.9	4.7	0.8	2.8	1.3	0.6	0.1	8.7	4.3	11.4	0.1	2.2	4	1.4	2.2

Thank you for your attention!

SANTE-COUNTRY-KNOWLEDGE@ec.europa.eu