

Navigating Health Inequalities in the EU through Artificial Intelligence

EU Health Policy Platform Thematic
Network 2022-23: Joint Statement
Presentation 19th April 2023



Brunel
University
London

HAI HEALTH
ACTION
INTERNATIONAL

*Presented by: Dr. Pin Lean Lau (Centre for AI: Social & Digital
Innovations) & Janneke van Oirschot (Health Action International)*



Contextual Background

- Use of AI in the health sector rapidly growing
- Growing evidence of risks for patients' health, wellbeing, and fundamental rights in absence of appropriate legislative/ governance frameworks
- Increased risks for key populations




layering patterns of inequalities related to: age, gender identity, sexual orientation, cultural identity, ethnicity, and race, (digital) literacy, disability and (mental) health status and residence status



Our approach

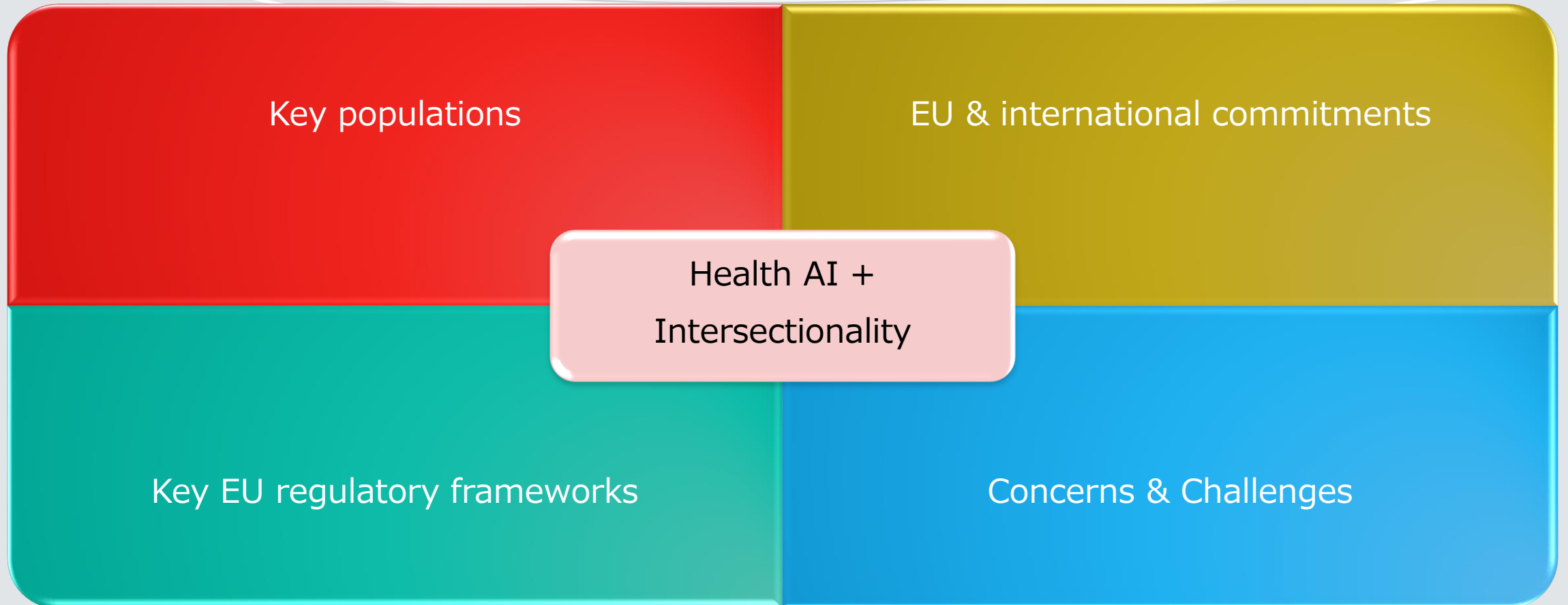
- **Webinar 1:** Outlining **legal dimensions** of AI in the EU and relationship with health and fundamental rights
- **Webinar 2:** Stakeholders' roundtable discussion with diverse interest groups sharing perspectives on risks and opportunities of health AI
 - ➔ Basis of Joint Statement (JS)
 - ➔ Draft JS received input from > 10 organisations




The Joint Statement: A Cross-Sectoral Approach

Directing the use of AI in
responsible, participatory, ethical
and equitable ways

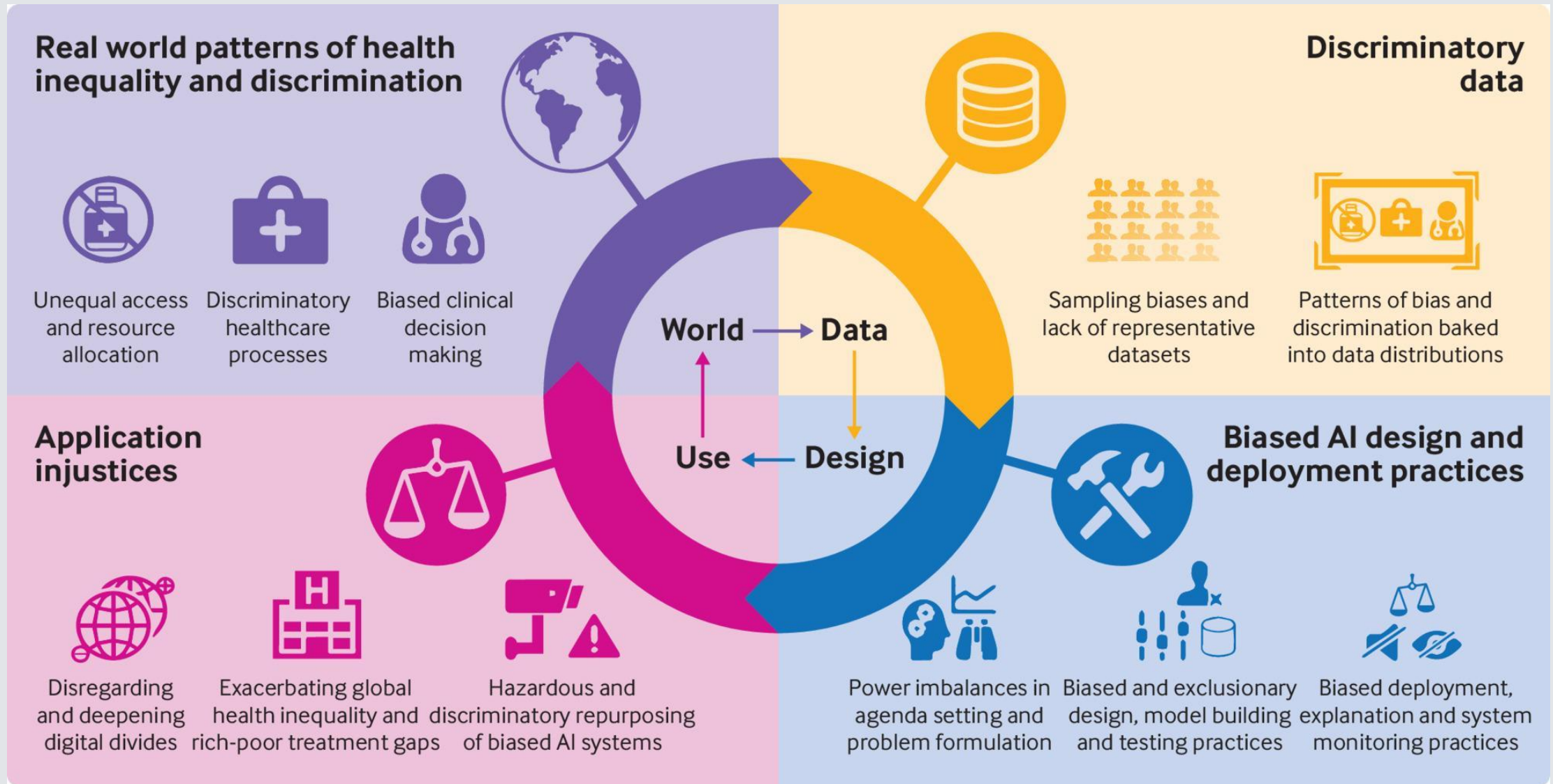
Cross-Sectoral Approach and Focused on EU-level initiatives



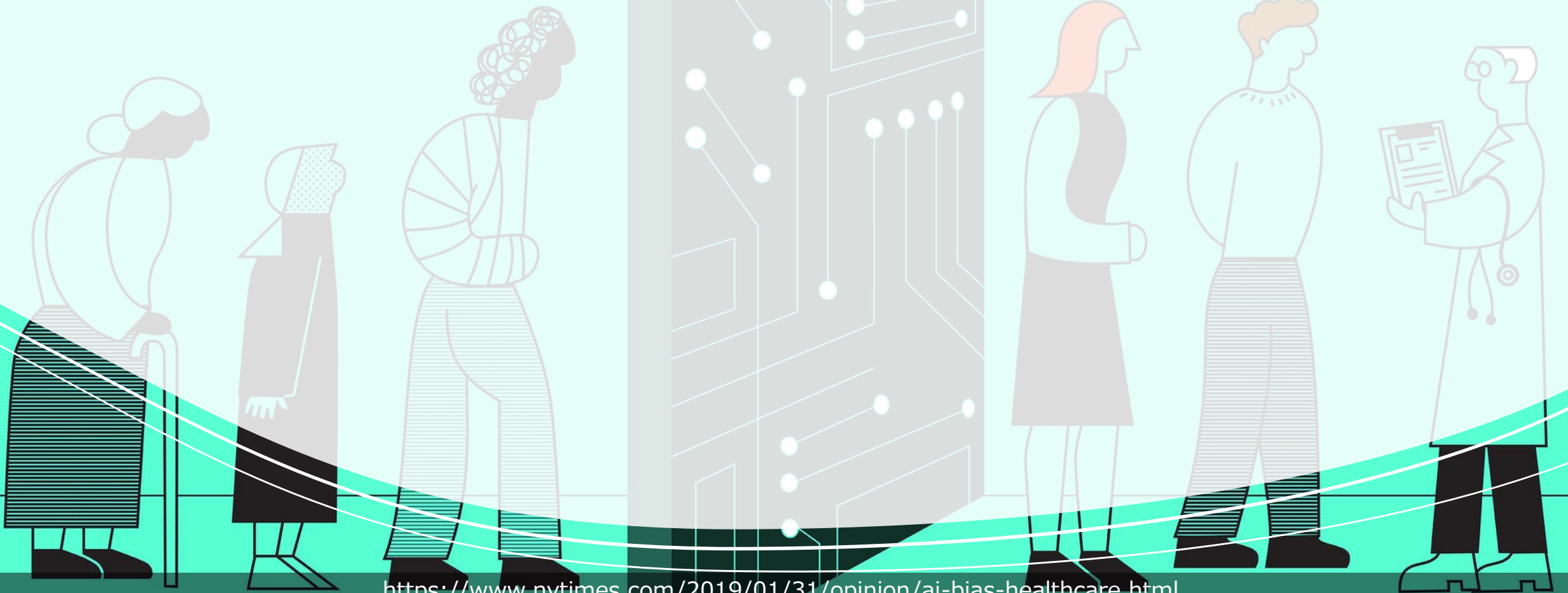


**Health AI
implications for
key populations**

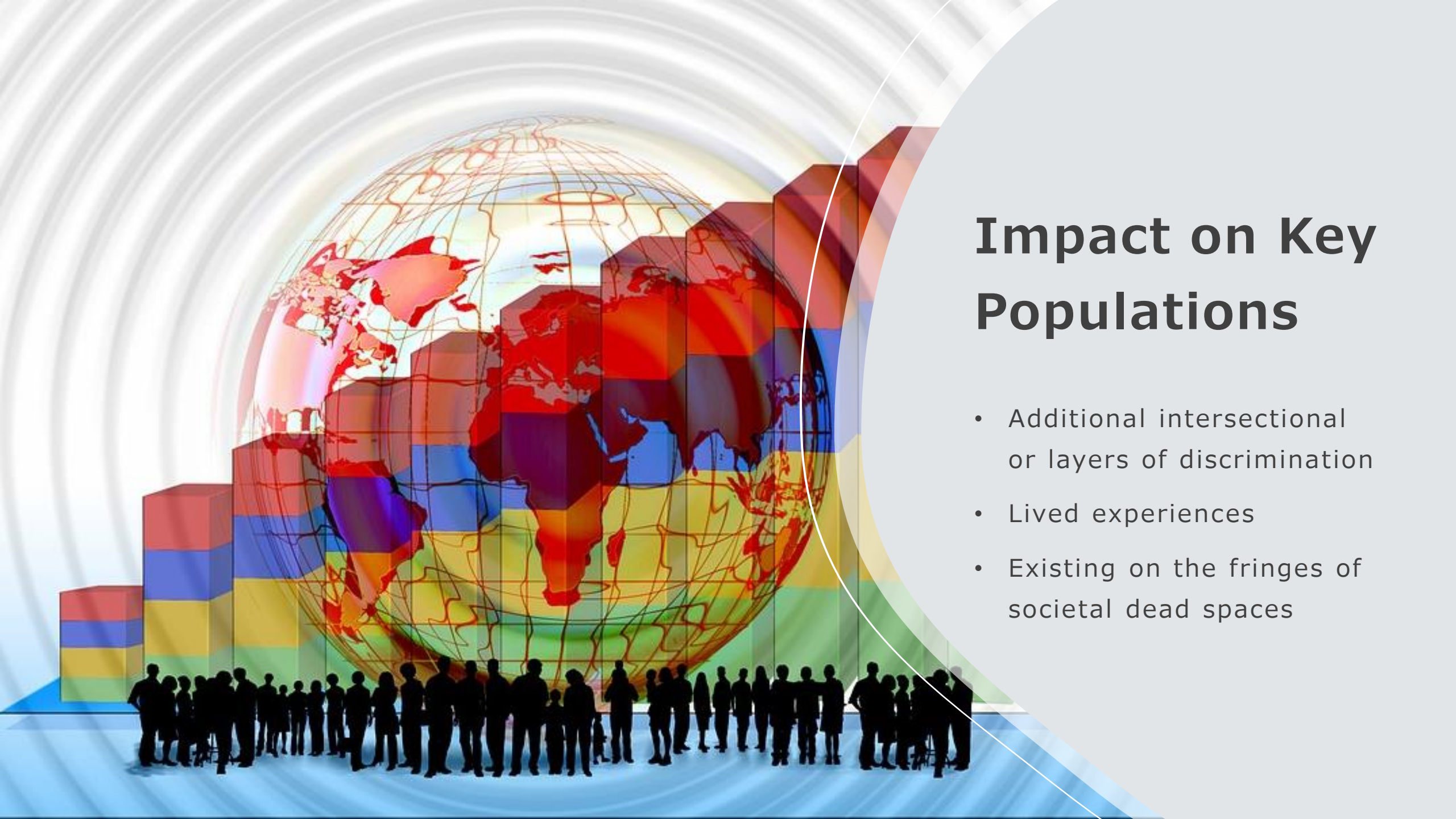
Cascading effects of health inequality and discrimination manifest in the design and use of artificial intelligence (AI) systems.



“On a societal level, AI is exacerbating structural inequalities and health inequalities due to existing historical, social, and cultural patterns of discrimination and systems of oppression, which most key populations have extensively experienced.”



<https://www.nytimes.com/2019/01/31/opinion/ai-bias-healthcare.html>



Impact on Key Populations

- Additional intersectional or layers of discrimination
- Lived experiences
- Existing on the fringes of societal dead spaces

AI implications for key populations

- AI is a technical tool, which cannot solve complex and multi-faceted issues of societal, cultural, and environmental origin
- Fair representation (in data, design, research, and technological development), trust, human rights, and anti-discrimination, essential
- AI to reduce health inequalities can only be developed in a community-based and radically co-creational way



Recommendations: General measures for Health AI

- Recognising the risk of overestimating AI's benefits and underestimating its limitations and detriments, in health care as well as more generally
- Recognising the existing inequalities in access to healthcare and the potential detrimental effects of AI used in healthcare.
- Require all AI systems used in the health sector to undergo an impact and ethical assessment and be subject to oversight
- Fostering potential ways for minimising risks of discrimination and bias
- Ensuring robust protection of personal data and confidentiality
- Setting up effective redress mechanisms allowing patients to contest use of the AI system/challenge the decision
- Setting up public EU wide system recording usage of Health AI



Recommendations:

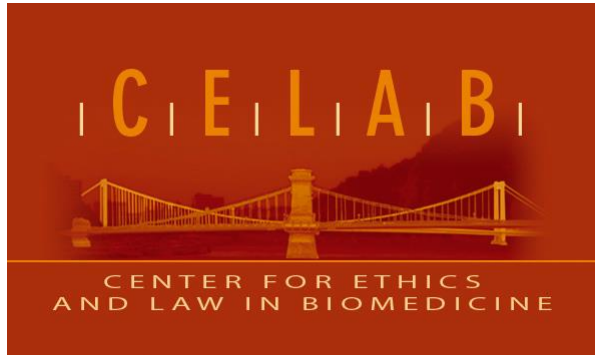
Specific measures for Health AI

- Improving infrastructure, opportunity, means, access and services to innovative treatments and therapies for all those who need them across Europe, with specific attention to key populations
- Furthering specific measures to ensure unbiased and unadulterated information on evidence-based public health and healthcare needs (especially for key populations)
- Involve people with lived experience in all stages of the development of AI, using a community centred approach
- Introducing the 'firewall' - creating legal, technical, and organizational separation enforcement activities and service provision to the same individuals

Early Endorsements of the Joint Statement by:



Fundacja
Moje Państwo





THANK YOU

Our Joint Statement can also be found on our Thematic Network Page [here](#).

Please feel free to contact us if you would like to endorse the JS or if you have any further questions.

- Dr. Pin Lean Lau
(PinLean.Lau@brunel.ac.uk)
- Janneke van Oirschot
(janneke@haiweb.org)